

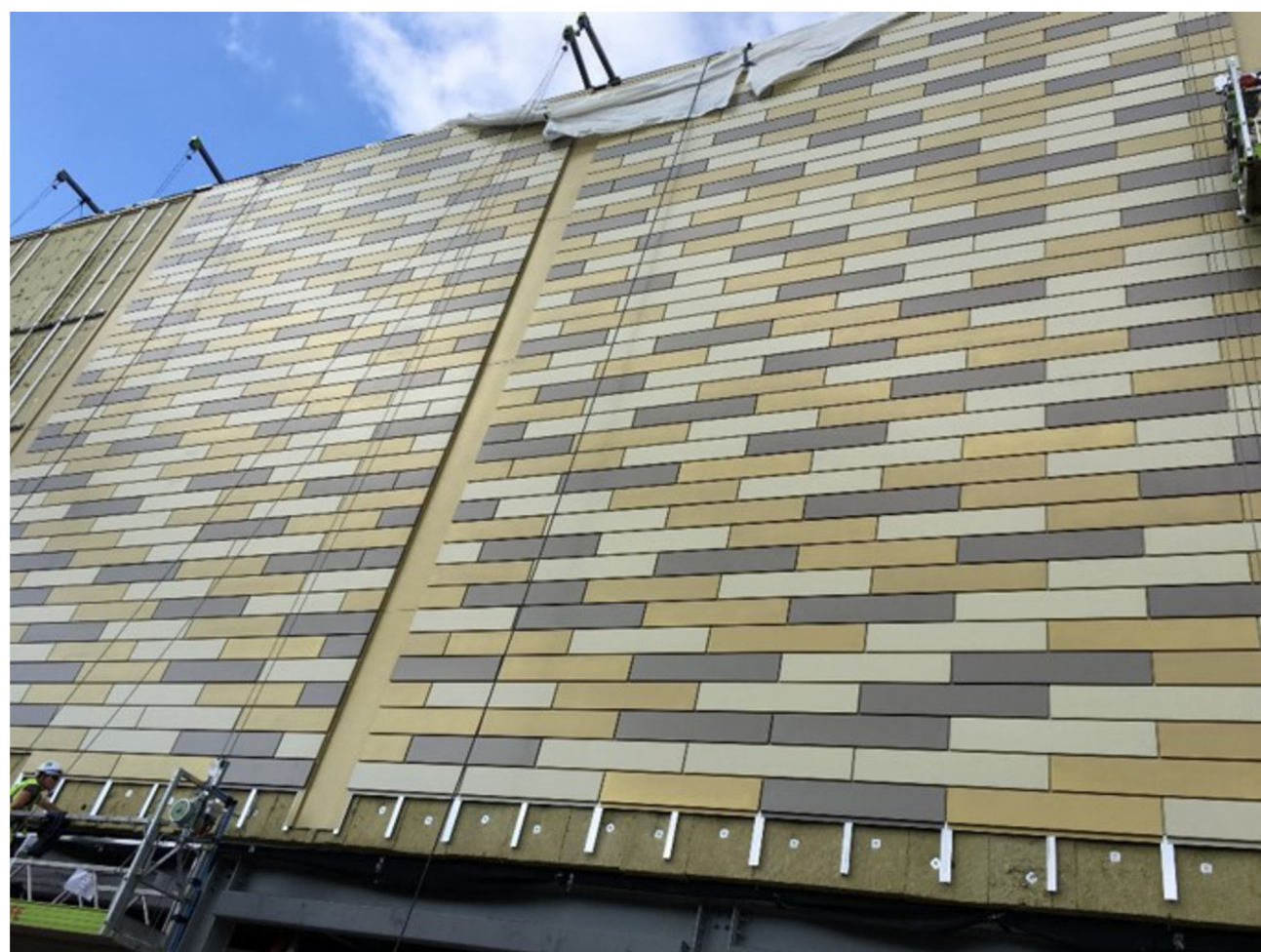
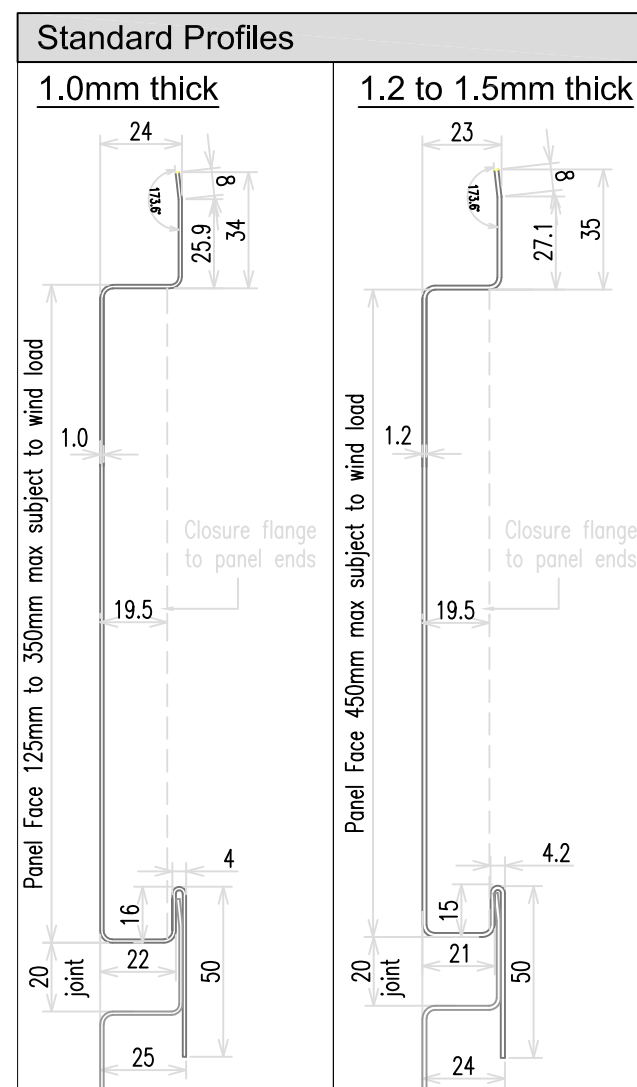
CGL Facades

Rear-Ventilated Horizontal WallPlank System

1mm to 1.5mm thick Sheet Metal (aluminium, zinc and copper)

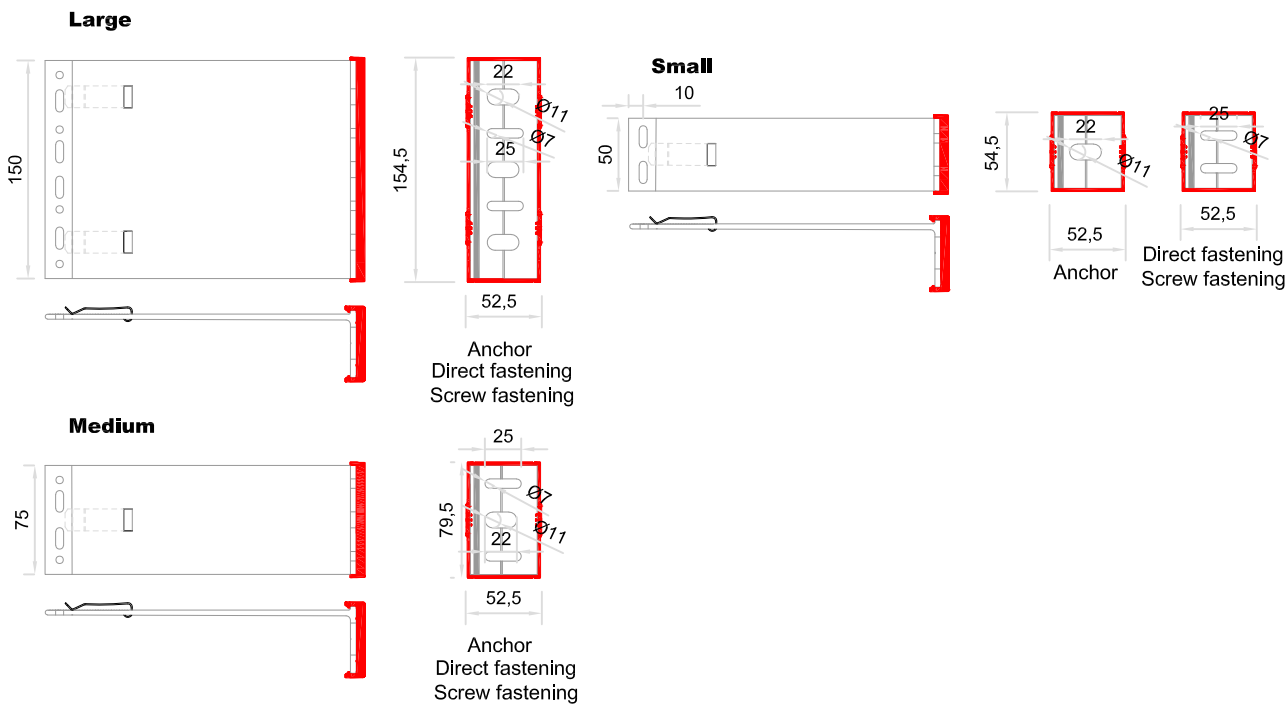
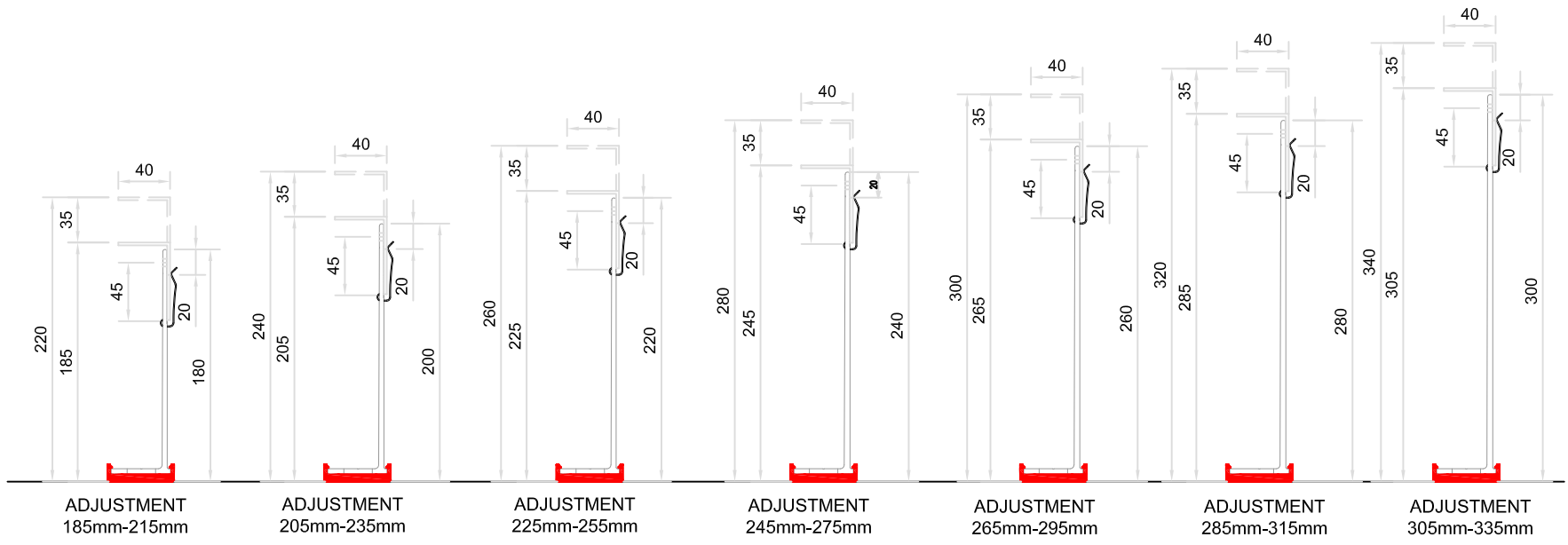
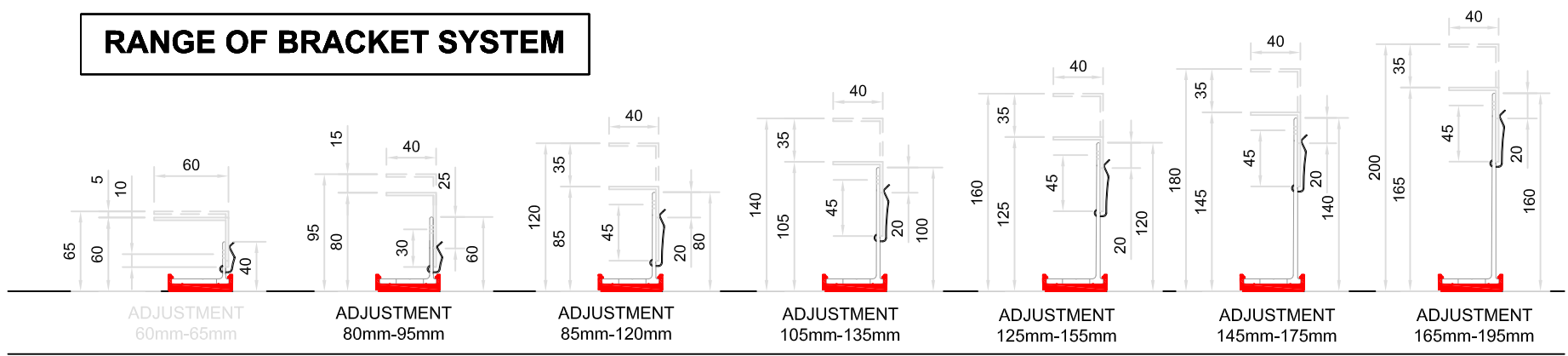
Contents

- WP-H-00 - System Contents & Photographs
- WP-H-01 - Range of Bracket System
- WP-H-02 - Cladding Detail Locations
- WP-H-03 - Section at Vertical Joint
- WP-H-04 - Section at Horizontal Joint
- WP-H-05 - Deflection Joint at Floor Slab (including Fire-Stop)
- WP-H-06 - Section thro' Vertical Expansion Joint
- WP-H-07 - Section at Base of Cladding
- WP-H-08 - Section at Head of Cladding
- WP-H-09 - Vertical Section thro' Window
- WP-H-10 - Window Jamb Detail
- WP-H-11 - External Corner
- WP-H-12 - Internal Corner



System					
Rear-Ventilated Facade					
Horizontal WallPlank System (1mm to 1.5mm thick Metal)					
Drawing No	Description			Revision	Scale
WP-H-00	System Contents Page			B	-
Drawn by	Rev	Description	Date	By	Date
GMcW	A	REVISED BRACKET RANGE	17/12/2021	MC	January 2019
	B	DRAWING UPDATED	03/02/2022	LB	

RANGE OF BRACKET SYSTEM



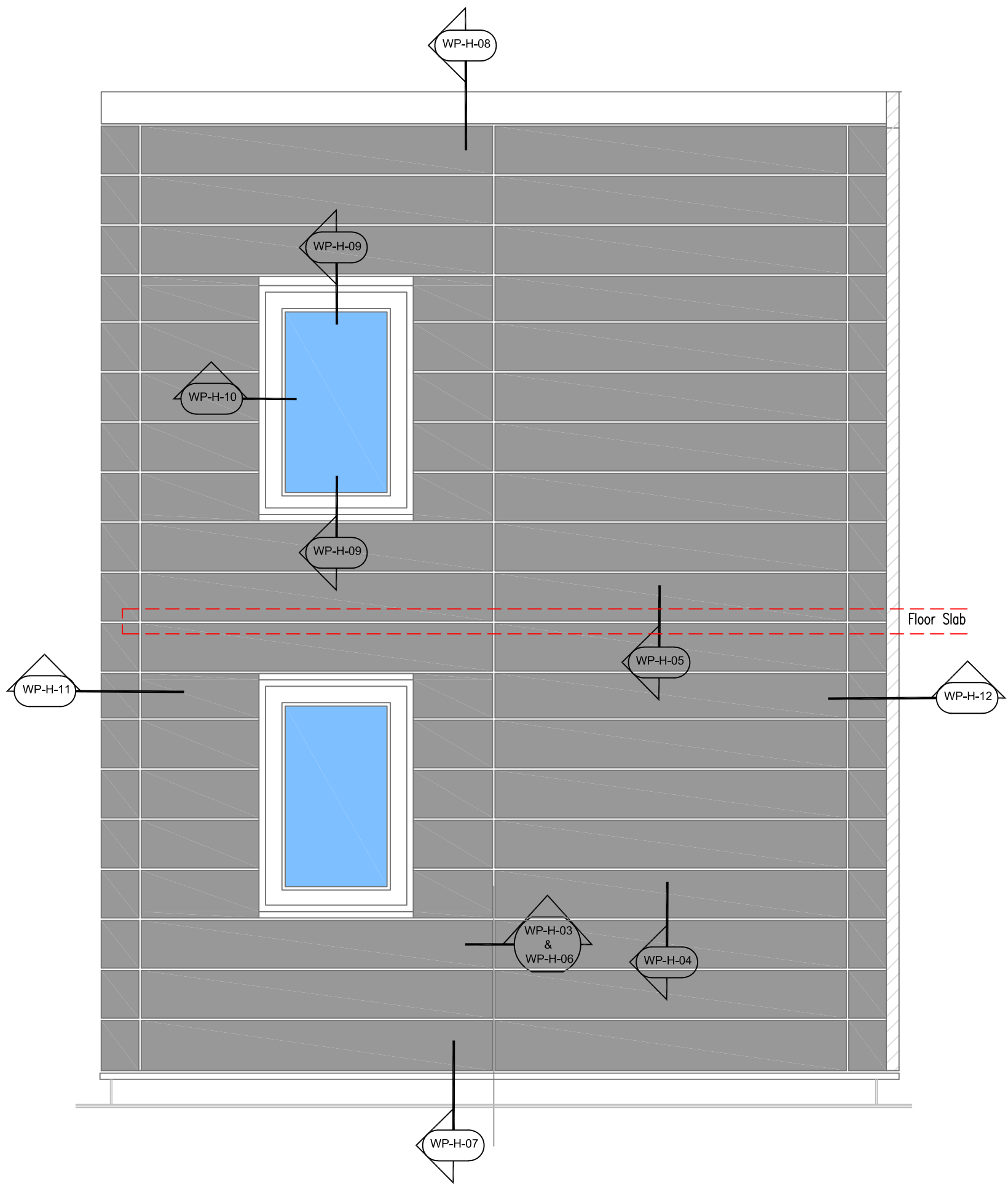
BRACKETS	Adjustment range for each bracket (mm)	
WP - 40	from 60	to 65
WP - 60	from 80	to 90
WP - 80	from 85	to 115
WP - 100	from 105	to 135
WP - 120	from 125	to 155
WP - 140	from 145	to 175
WP - 160	from 165	to 195
WP - 180	from 285	to 215
WP - 200	from 205	to 235
WP - 220	from 225	to 255
WP - 240	from 245	to 275
WP - 260	from 265	to 295
WP - 280	from 285	to 315
WP - 300	from 305	to 335

NOTE: -
DIMENSION RANGES DOES INCLUDE FOR THERMAL PADS



System
Rear-Ventilated Facade
Horizontal WallPlank System (1mm to 1.5mm thick Metal)

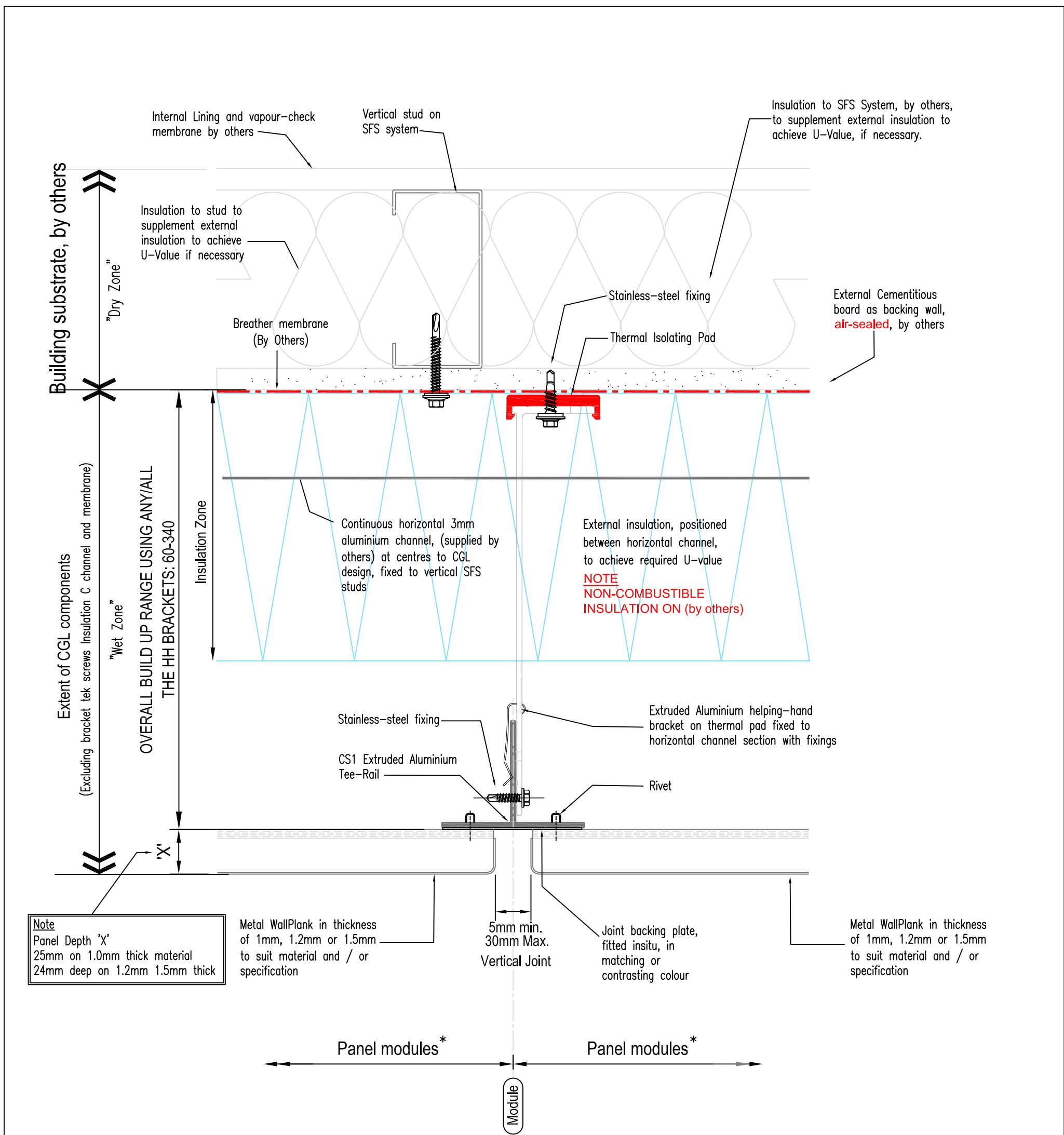
Drawing No	Description	Revision	Scale
WP-H-01	Range of Bracket System	B	-
Drawn by	Rev	Description	Date
GMcW	A	Upper limits altered	06/08/2018
	B	Revised Bracket Range	14/01/2022
	By	Date	
	GMcW	January 2019	
	LR		



Elevation on Cladding



System						
Rear-Ventilated Facade						
Horizontal WallPlank System (1mm to 1.5mm thick Metal)						
Drawing No		Description			Revision	Scale
WP-H-02		Cladding Detail Locations			B	-
Drawn by		Rev	Description	Date	By	Date
GMcW		A	REVISED BRACKET RANGE	17/12/2021	MC	January 2019
		B	DRAWING UPDATED	03/02/2022	LB	



Notes:

Joint applicable to aluminium, zinc and Copper. Depths and thickness of panels can vary.

* For panel module parameters refer to "Systems Overview" document.

Non CGL components are indicative and subject to contractors project specification

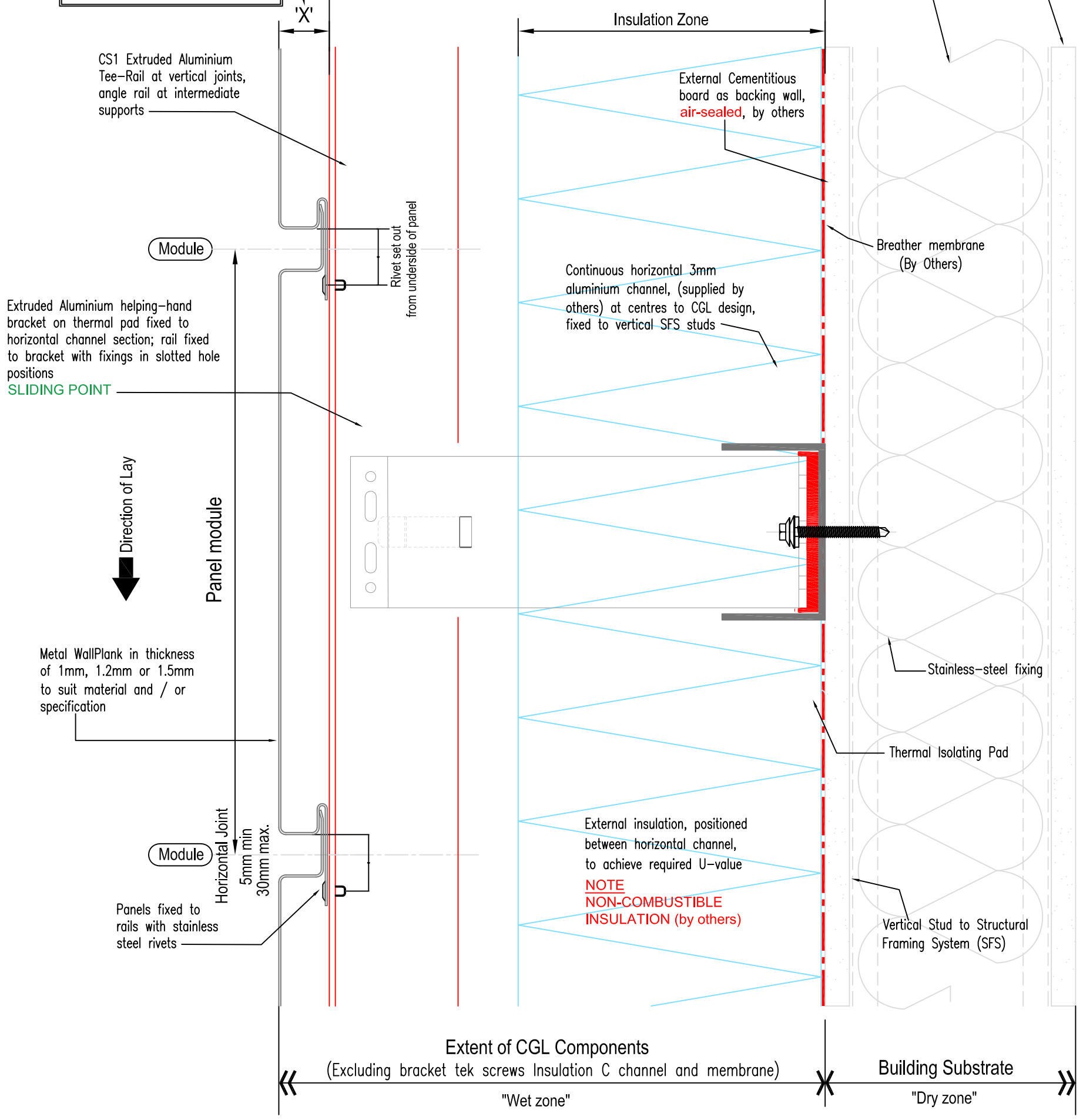


System					
Rear-Ventilated Facade Horizontal WallPlank System (1mm to 1.5mm thick Metal)					
Drawing No		Description		Revision	Scale
WP-H-03		Section at Vertical Joint		B	1:2 @ A3
Drawn by		Rev	Description	Date	By
GMcW		A	REVISED BRACKET RANGE	17/12/2021	MC
		B	DRAWING UPDATED	03/02/2022	LB
				Date	
				January 2019	

Note
 Panel Depth 'X'
 25mm on 1.0mm thick
 24mm deep on 1.2mm thick
 26mm deep on 1.5mm thick

OVERALL BUILD UP RANGE USING ANY/ALL
 THE HH BRACKETS: 60-340

Insulation to SFS System, by others, to supplement external insulation to achieve U-Value, if necessary.
 Internal Lining and vapour-check membrane by others

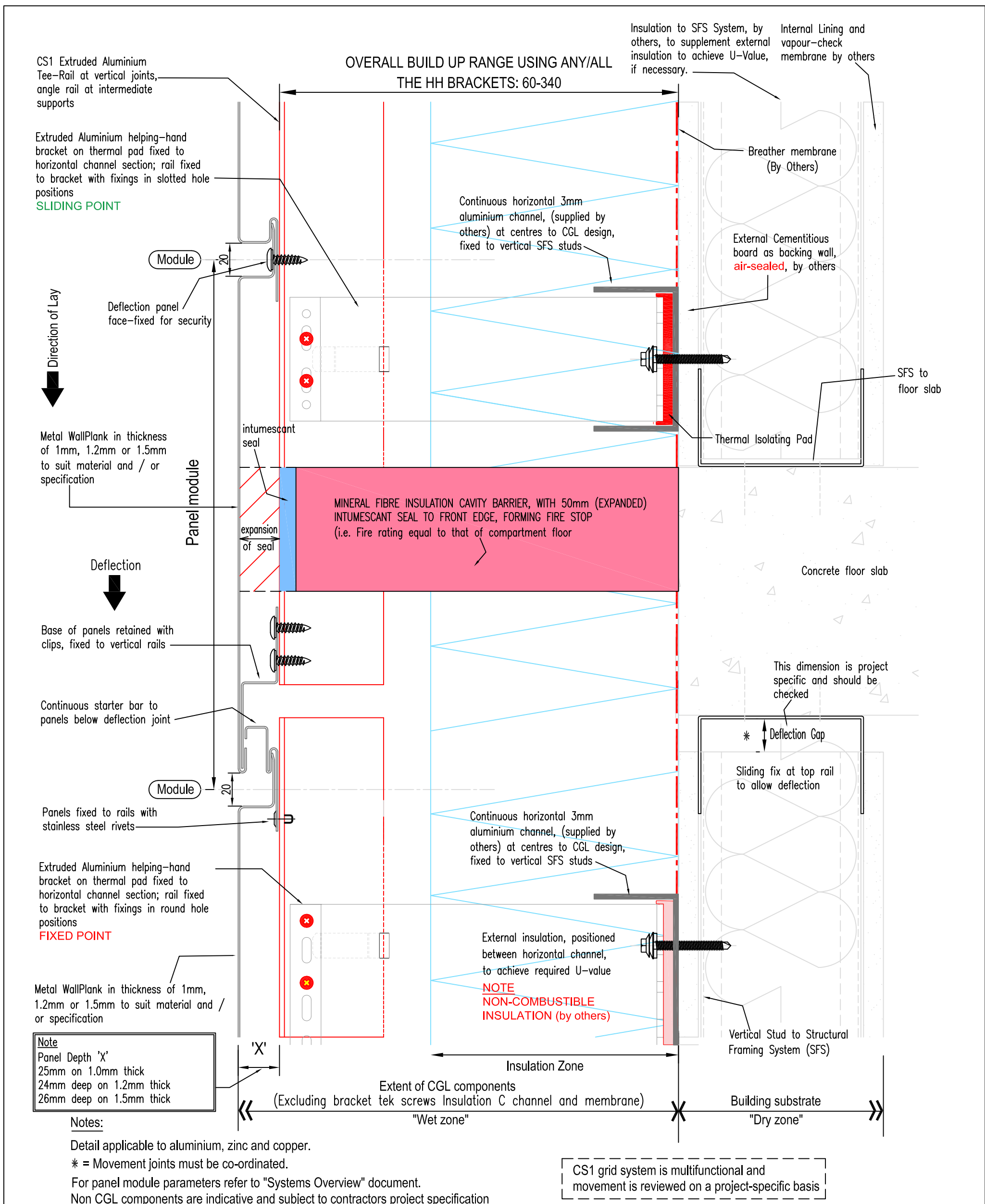


Notes:
 Joint applicable to aluminium, zinc and copper.
 Non CGL components are indicative and subject to contractors project specification

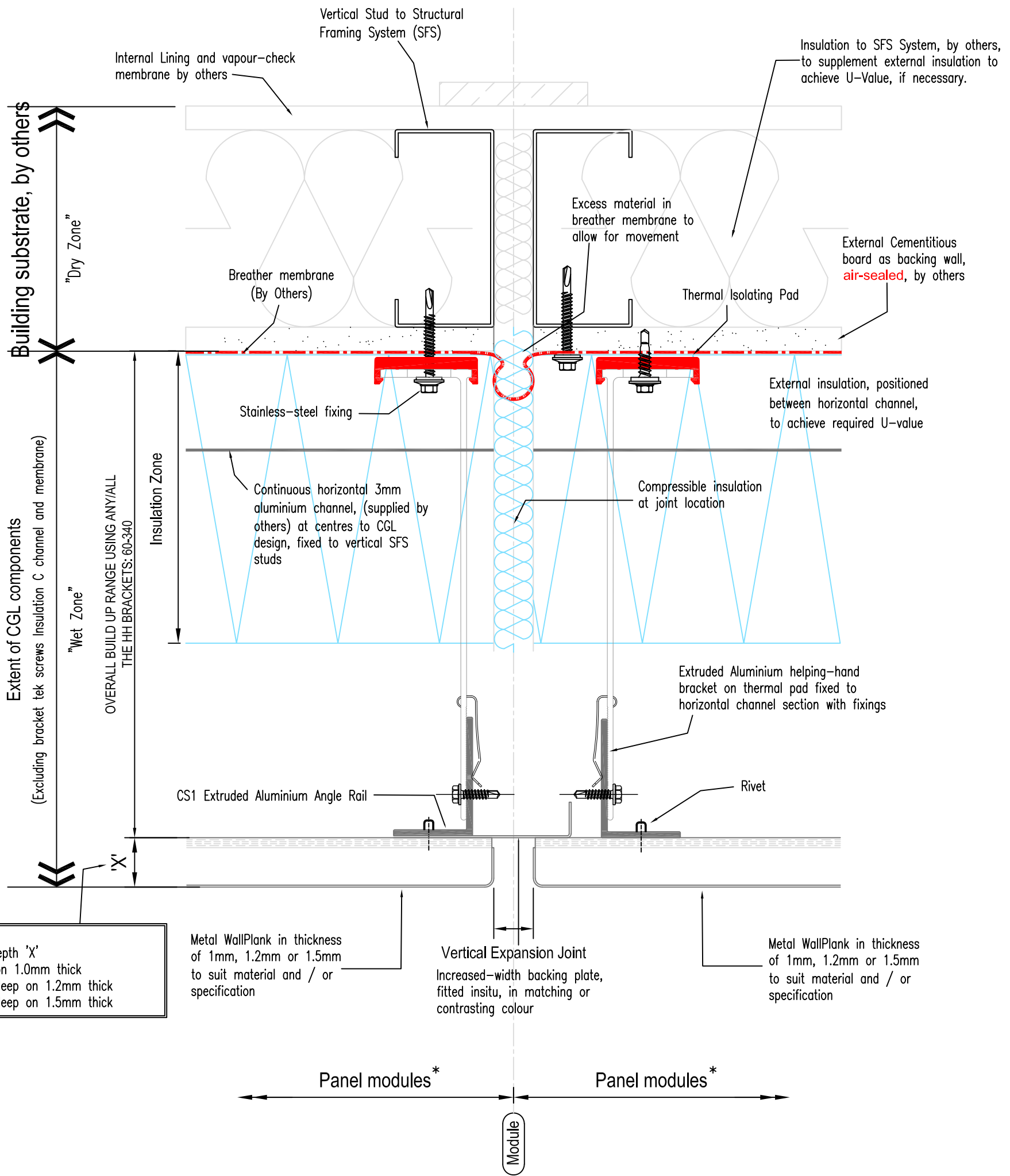
CS1 grid system is multifunctional and movement is reviewed on a project-specific basis



System					
Rear-Ventilated Facade Horizontal WallPlank System (1mm to 1.5mm thick Metal)					
Drawing No	Description			Revision	Scale
WP-H-04	Section at Horizontal Joint			B	1:2 @ A3
Drawn by	Rev	Description	Date	By	Date
GMcW	A	REVISED BRACKET RANGE	17/12/2021	MC	January 2019
	B	DRAWING UPDATED	03/02/2022	LB	



System					
Rear-Ventilated Facade Horizontal WallPlank System (1mm to 1.5mm thick Metal)					
Drawing No		Description		Revision	Scale
WP-H-05		Deflection Detail at Floor Slab (incorporating fire stop arrangement)		B	1:2 @ A3
Drawn by		Rev	Description	Date	By
GMcW		A	REVISED BRACKET RANGE	17/12/2021	MC
		B	DRAWING UPDATED	03/02/2022	LB
		Date		Date	
		January 2019			



Note
 Panel Depth 'X'
 25mm on 1.0mm thick
 24mm deep on 1.2mm thick
 26mm deep on 1.5mm thick

Notes:

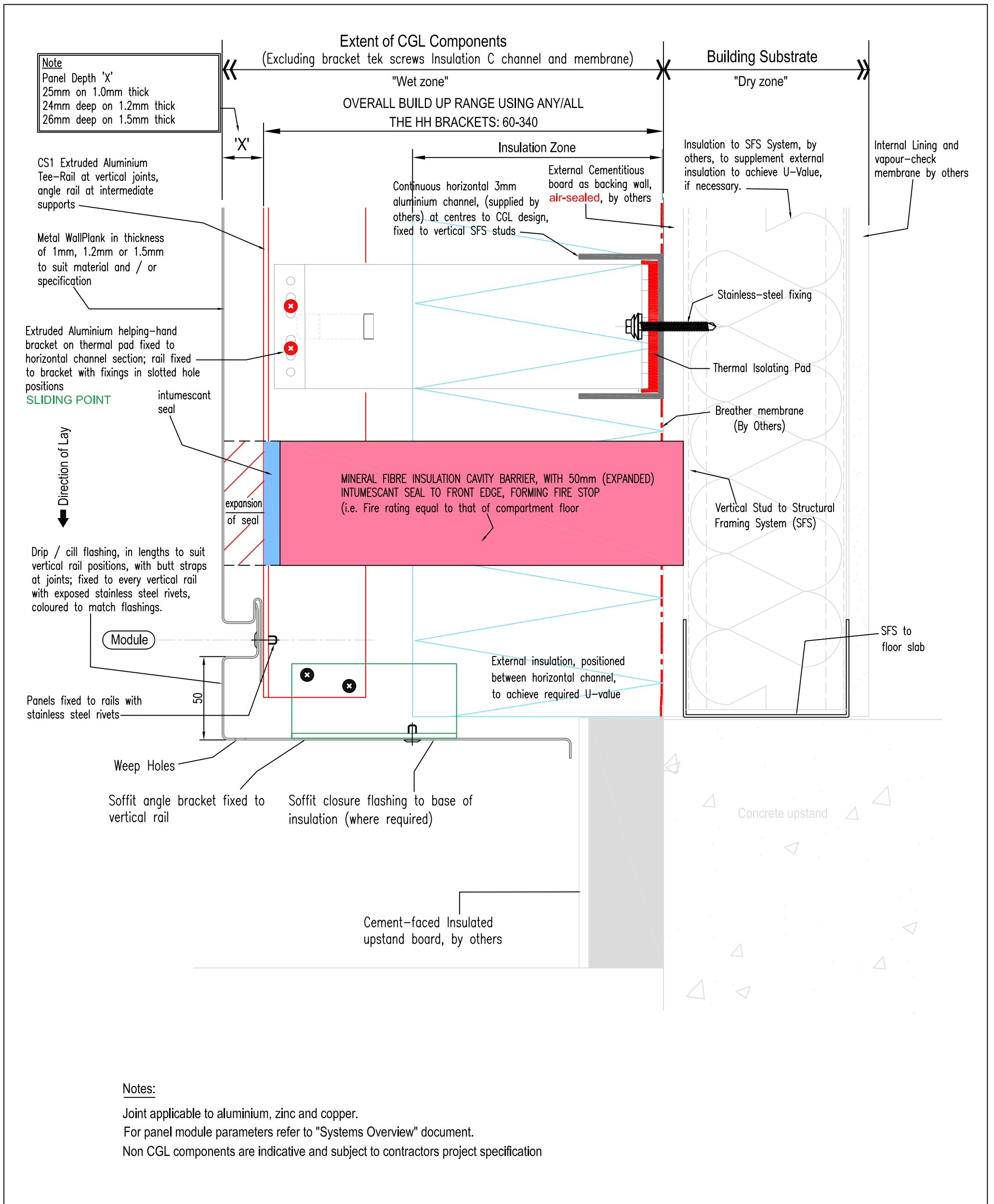
Joint applicable to aluminium, zinc and Copper. Depths and thickness of panels can vary.

* For panel module parameters refer to "Systems Overview" document.

Non CGL components are indicative and subject to contractors project specification



System					
Rear-Ventilated Facade					
Horizontal WallPlank System (1mm to 1.5mm thick Metal)					
Drawing No		Description		Revision	Scale
WP-H-06		Section at Vertical Expansion Joint		B	1:2 @ A3
Drawn by		Rev	Description	Date	By
GMcW		A	REVISED BRACKET RANGE	17/12/2021	MC
		B	DRAWING UPDATED	03/02/2022	LB
				Date	
				January 2019	

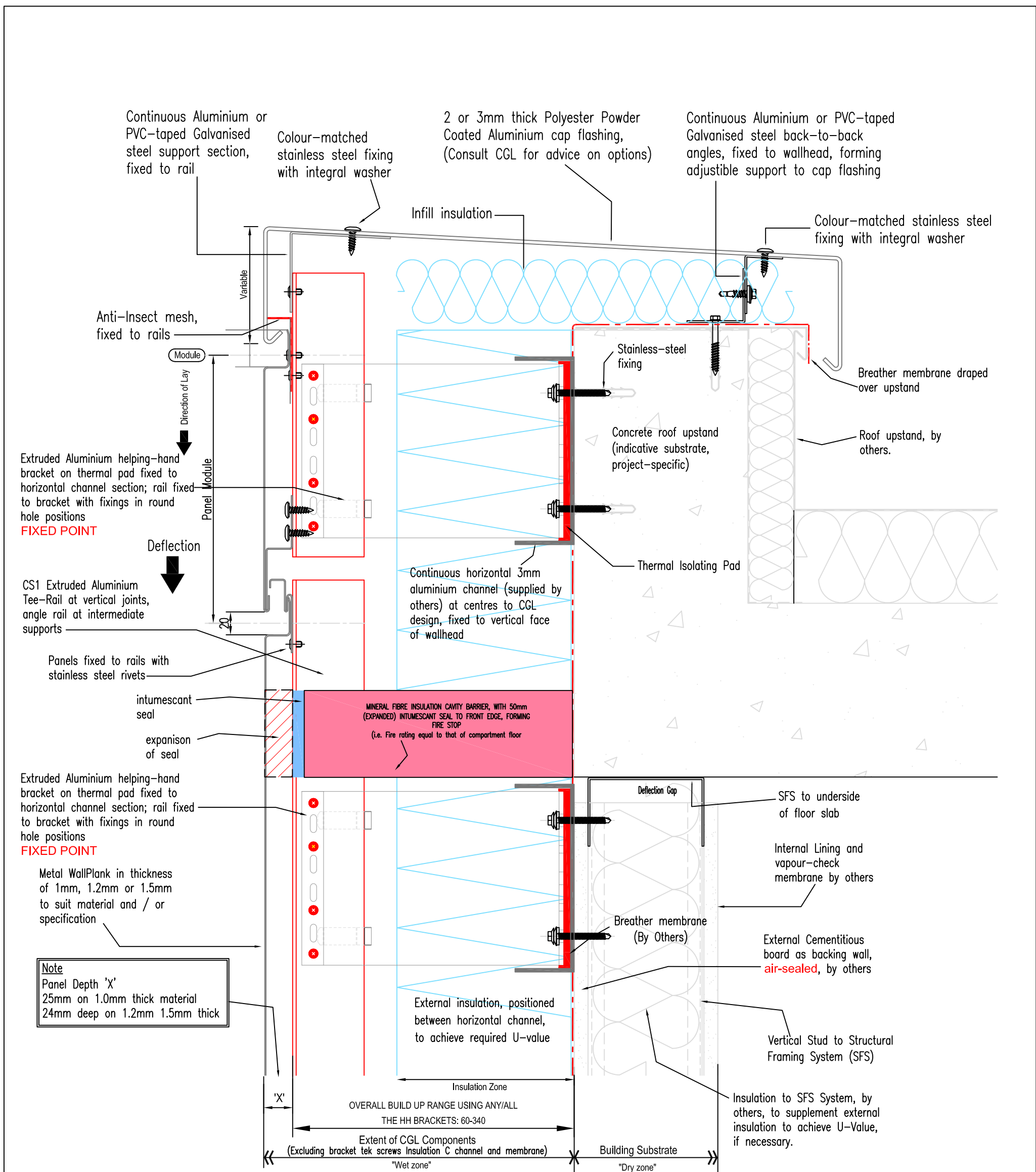


Notes:

- Joint applicable to aluminium, zinc and copper.
- For panel module parameters refer to "Systems Overview" document.
- Non CGL components are indicative and subject to contractors project specification



System					
Rear-Ventilated Facade Horizontal WallPlank System (1mm to 1.5mm thick Metal)					
Drawing No	Description			Revision	Scale
WP-H-07	Section at Base of Cladding			B	1:2 @ A3
Drawn by	Rev	Description	Date	By	Date
GMcW	A	REVISED BRACKET RANGE	17/12/2021	MC	January 2019
	B	DRAWING UPDATED	03/02/2022	LB	

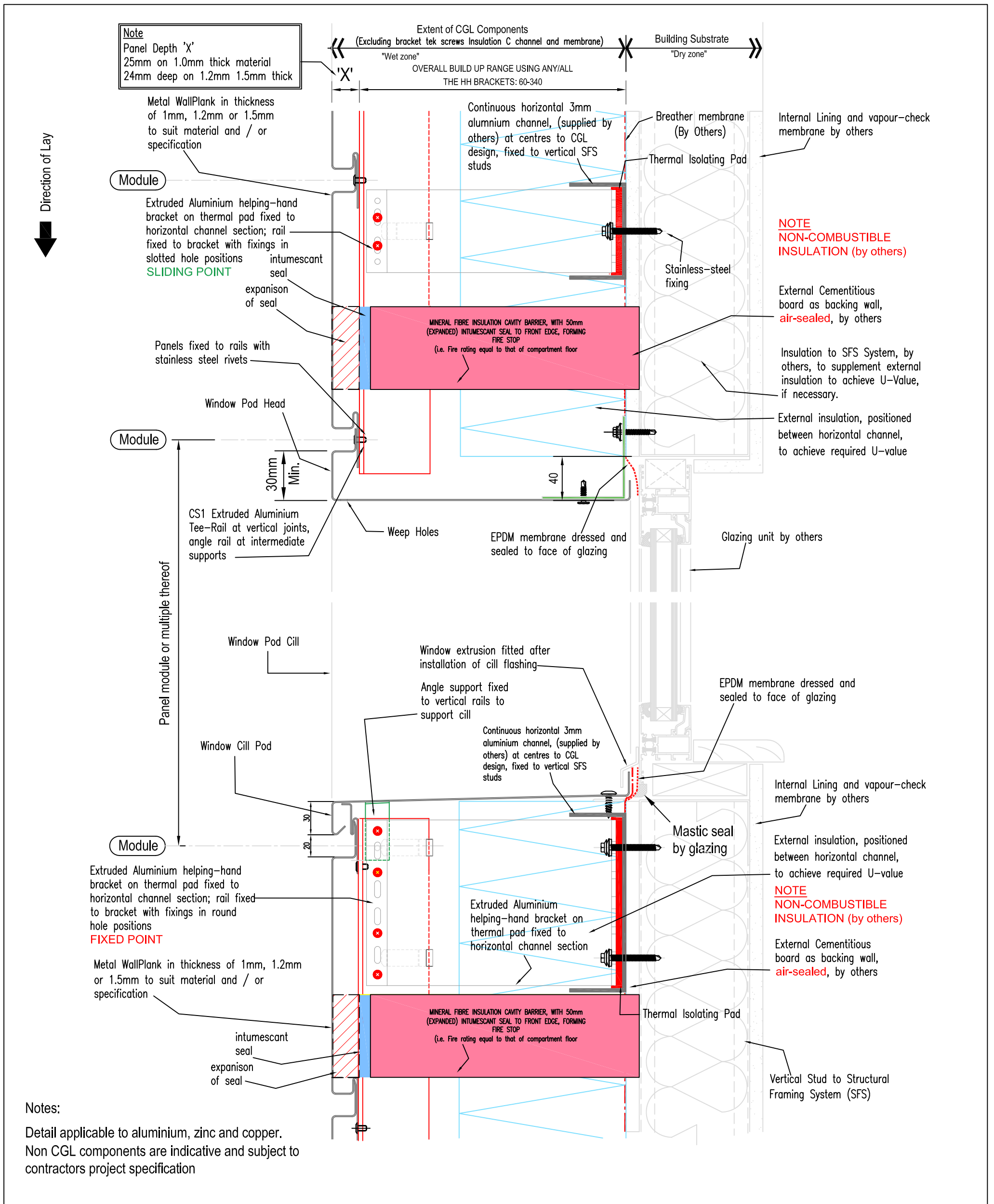


Notes:

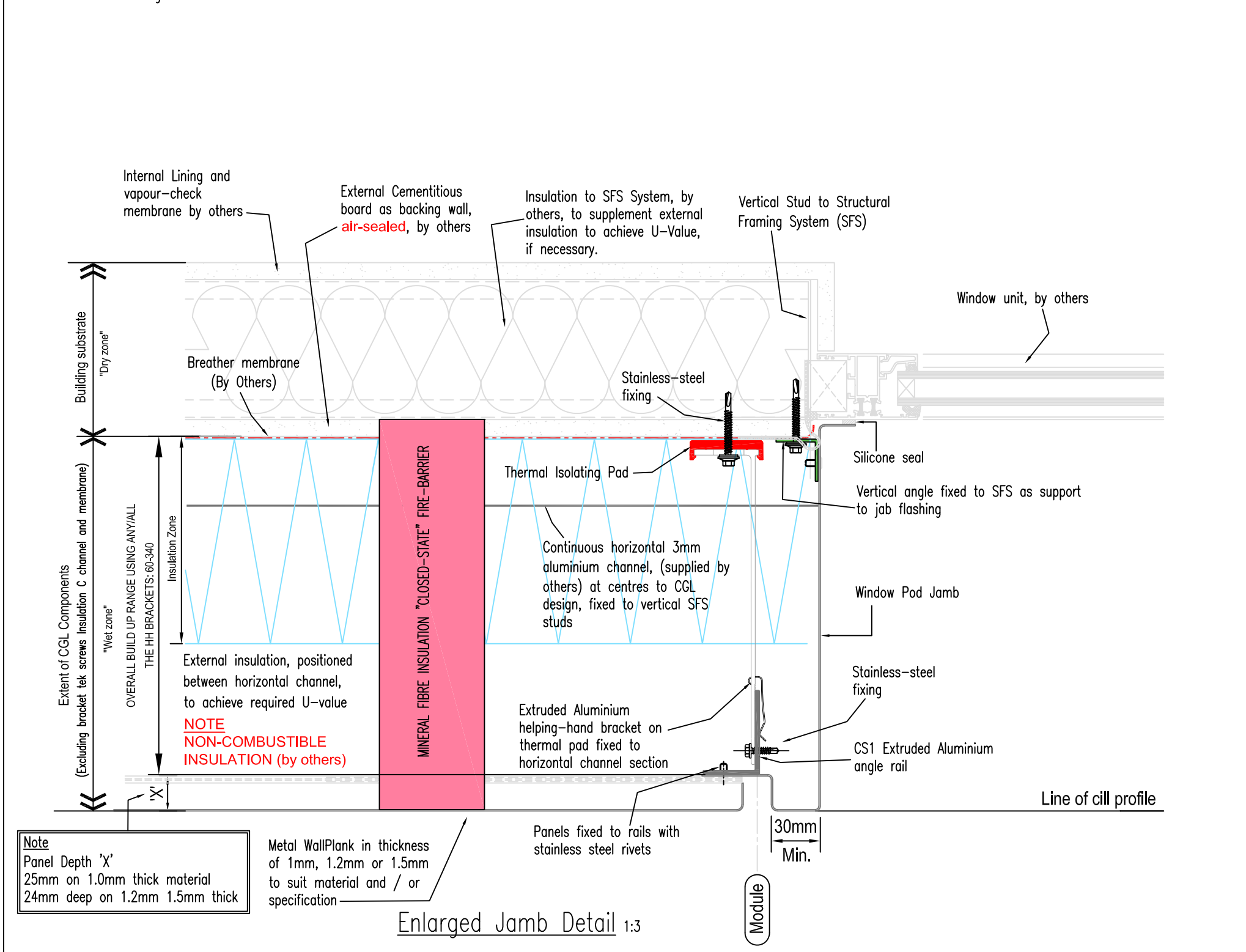
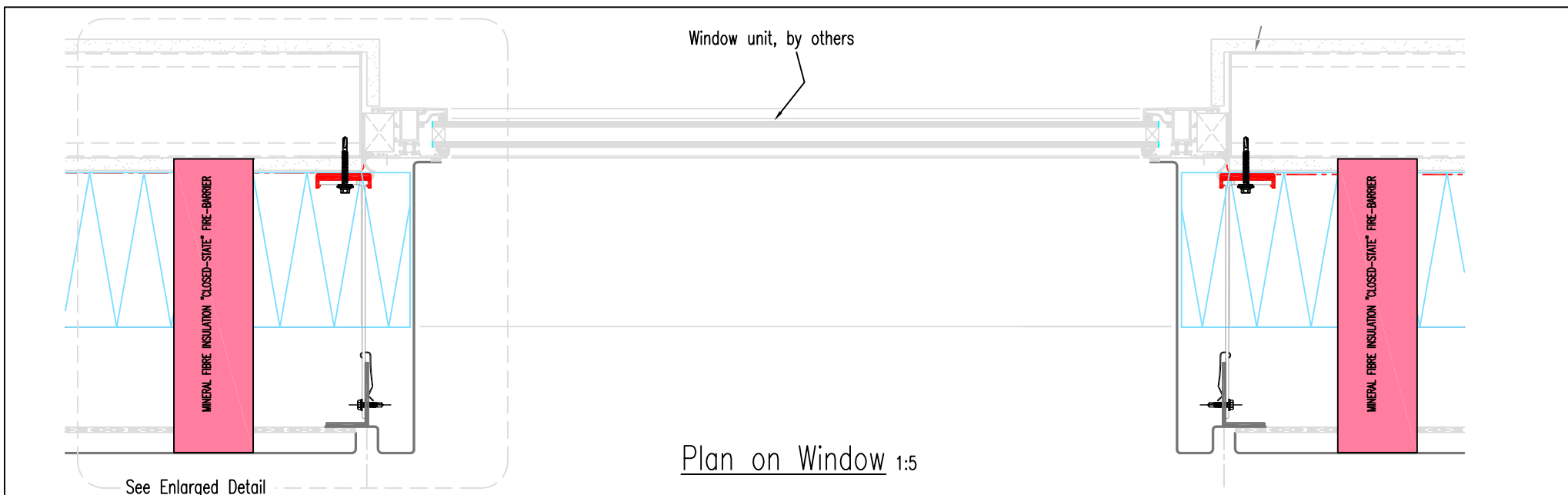
- Joint applicable to aluminium, zinc and copper.
- For panel module parameters refer to "Systems Overview" document.
- Non CGL components are indicative and subject to contractors project specification



System Rear-Ventilated Facade Horizontal WallPlank System (1mm to 1.5mm thick Metal)						
Drawing No WP-H-08		Description Section at Top of Cladding			Revision B	Scale 1:3 @ A3
Drawn by GMcW	Rev A B	Description REVISED BRACKET RANGE DRAWING UPDATED	Date 17/12/2021 03/02/2022	By MC LB	Date January 2019	



System					
Rear-Ventilated Facade Horizontal WallPlank System (1mm to 1.5mm thick Metal)					
Drawing No	Description			Revision	Scale
WP-H-09	Section thro' Window			B	1:3 @ A3
Drawn by	Rev	Description	Date	By	Date
GMcW	A	REVISED BRACKET RANGE	17/12/2021	MC	January 2019
	B	DRAWING UPDATED	03/02/2022	LB	



Notes:

- Joint applicable to aluminium, zinc and copper.
- For panel module parameters refer to "Systems Overview" document.
- Non CGL components are indicative and subject to contractors project specification

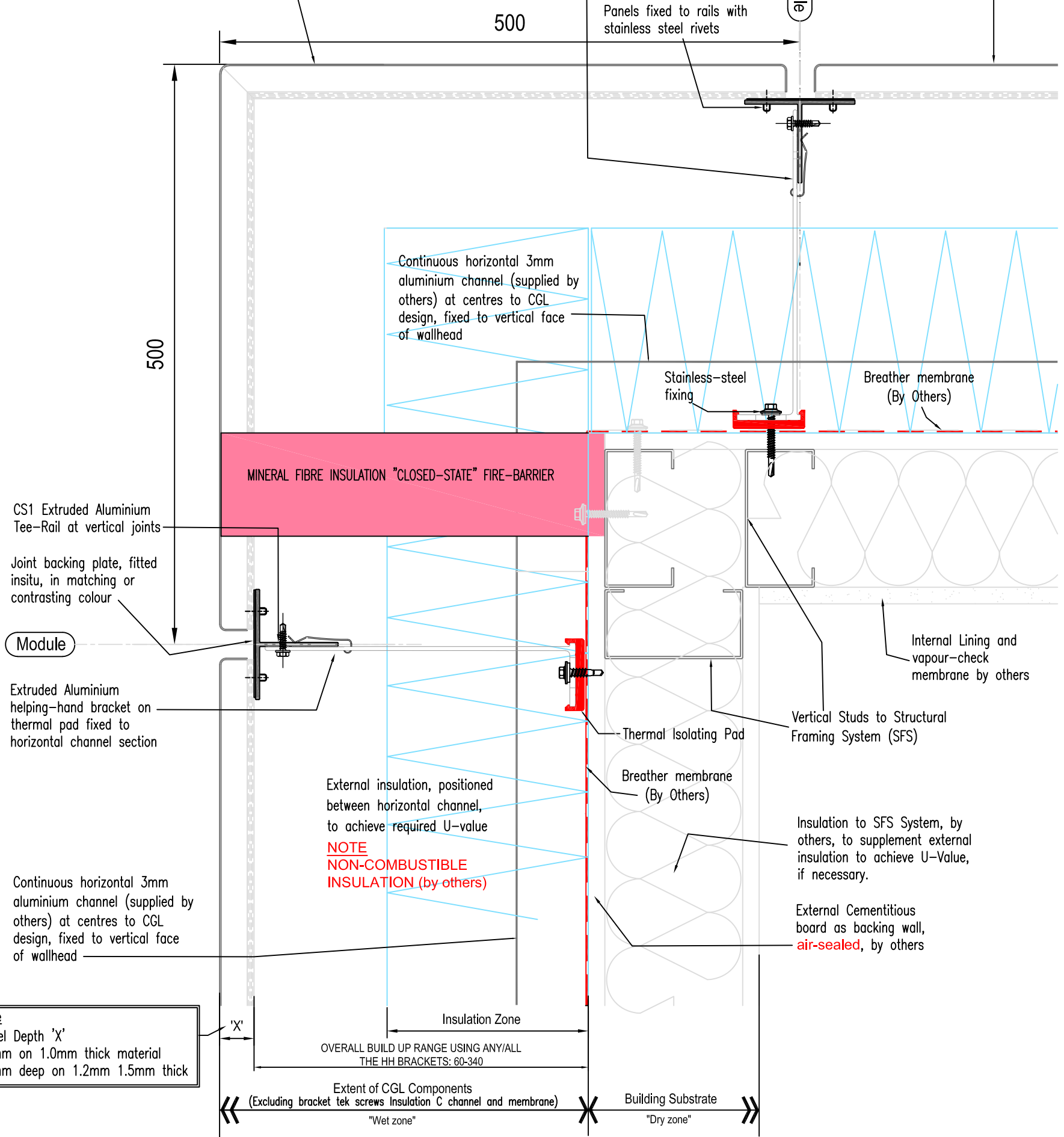


System					
Rear-Ventilated Facade					
Horizontal WallPlank System (1mm to 1.5mm thick Metal)					
Drawing No	Description			Revision	Scale
WP-H-10	Window Jamb Detail			B	As shown @ A3
Drawn by	Rev	Description	Date	By	Date
GMcW	A	REVISED BRACKET RANGE	17/12/2021	MC	January 2019
	B	DRAWING UPDATED	03/02/2022	LB	

Factory-formed Corner WallPlank in metal thickness of 1mm, 1.2mm or 1.5mm to suit material and / or specification.

CS1 Extruded Aluminium helping-hand bracket on thermal pad fixed to horizontal channel section

Metal WallPlank in thickness of 1mm, 1.2mm or 1.5mm to suit material and / or specification

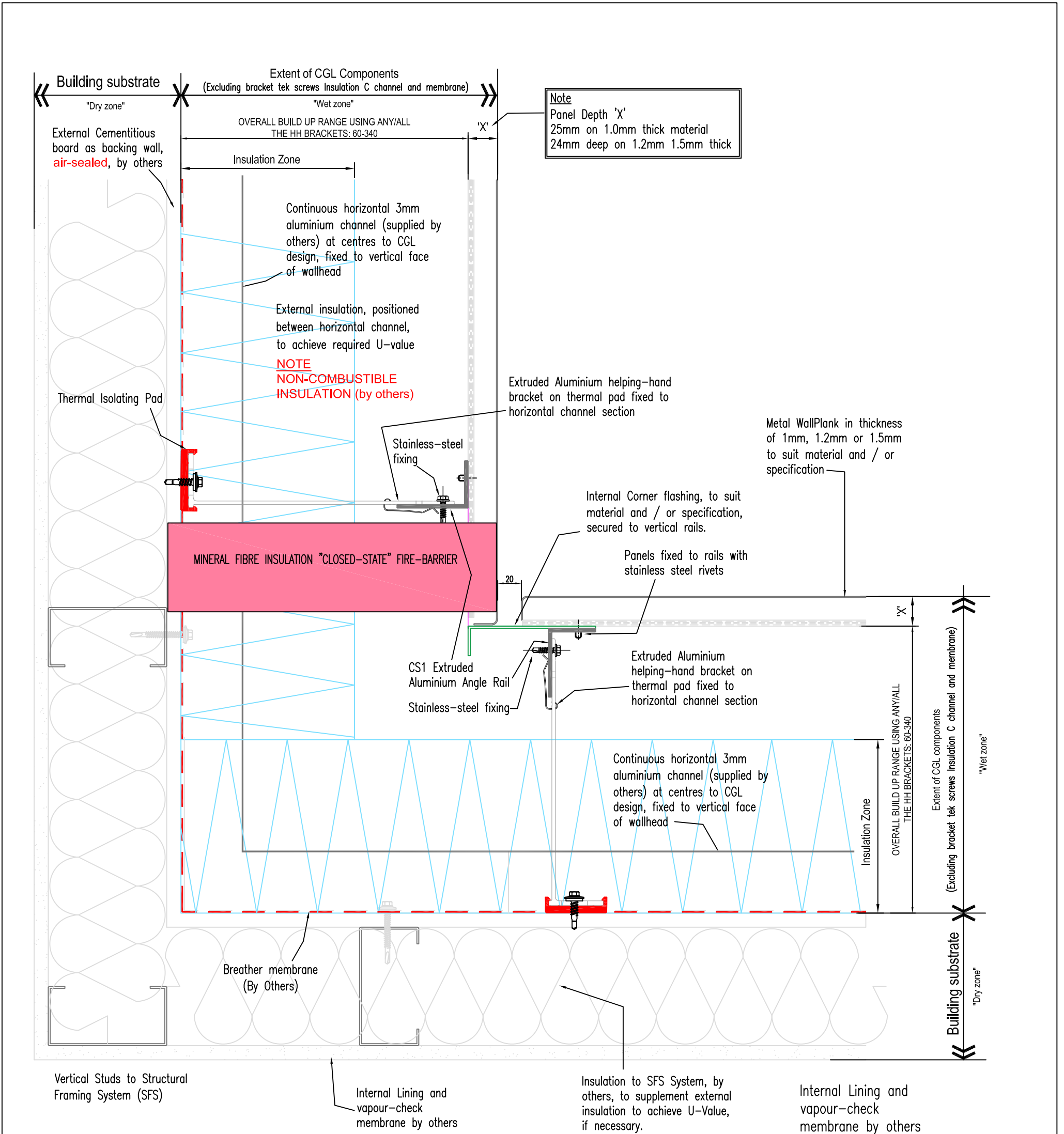


Note
Panel Depth 'X'
25mm on 1.0mm thick material
24mm deep on 1.2mm 1.5mm thick

Notes:
Joint applicable to aluminium, zinc and copper.
For panel module parameters refer to "Systems Overview" document.
Non CGL components are indicative and subject to contractors project specification



System Rear-Ventilated Facade Horizontal WallPlank System (1mm to 1.5mm thick Metal)						
Drawing No WP-H-11		Description External Corner Panel Detail			Revision B	Scale 1:3 @ A3
Drawn by GMcW	Rev A B	Description REVISED BRACKET RANGE DRAWING UPDATED	Date 17/12/2021 03/02/2022	By MC LB	Date January 2019	



Notes:
 Joint applicable to aluminium, zinc and copper.
 For panel module parameters refer to "Systems Overview" document.
 Non CGL components are indicative and subject to contractors project specification



System					
Rear-Ventilated Facade Horizontal WallPlank System (1mm to 1.5mm thick Metal)					
Drawing No		Description		Revision	Scale
WP-H-12		Internal Corner Detail		B	1:3 @ A3
Drawn by		Rev	Description	Date	By
GMcW		A	REVISED BRACKET RANGE	17/12/2021	MC
		B	DRAWING UPDATED	03/02/2022	LB
				Date	January 2019