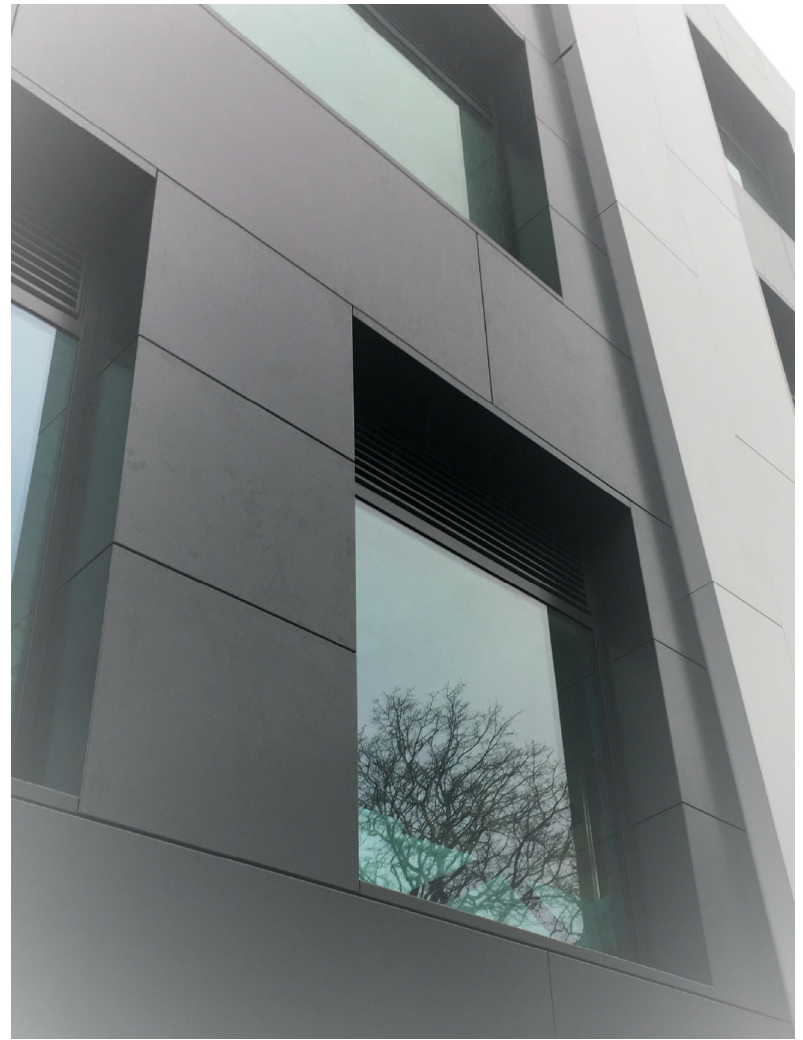


CGL Facades

Rear-Ventilated CS2-1 "Hook-on" Rainscreen System

Contents

- CS2-1-00 - System Contents Photographs CS2-1-01
- CS2-1-02 - Cladding Detail Locations
- CS2-1-03 - Horizontal Section
- CS2-1-04 - Vertical Section at Fixed Point CS2-1-05
- CS2-1-06 - Vertical Section at Base of Cladding
- CS2-1-07 - Vertical Section at Head of Cladding
- CS2-1-08 - Horizontal Section at Window Jamb
- CS2-1-09 - Vertical Section at Window Cill
- CS2-1-10 - Vertical Section at Window Head
- CS2-1-11 - External Corner
- CS2-1-12 - Internal Corner
- CS2-1-13 - Detail at Floor Slab
(including Fire Stop & Deflection Details)
- CS2-1-14 - Vertical Expansion Joint



CS2-1 Extruded Rail, Hooks & Panels



Eurotunnel Lounge, Folkstone, Kent

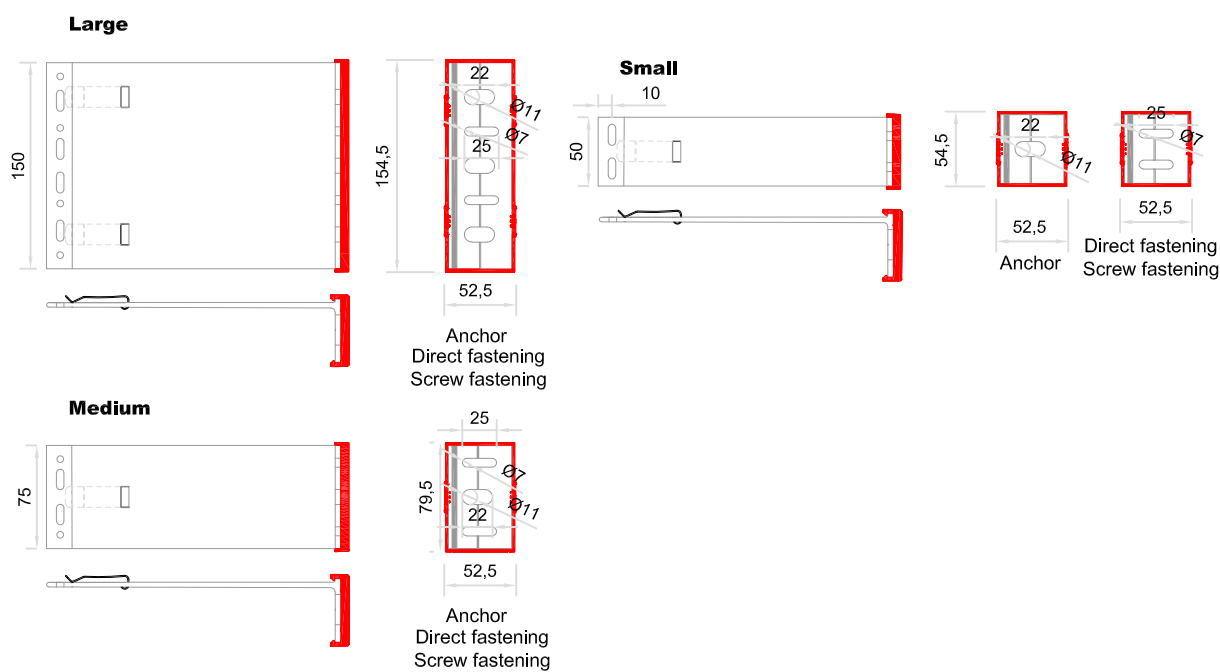
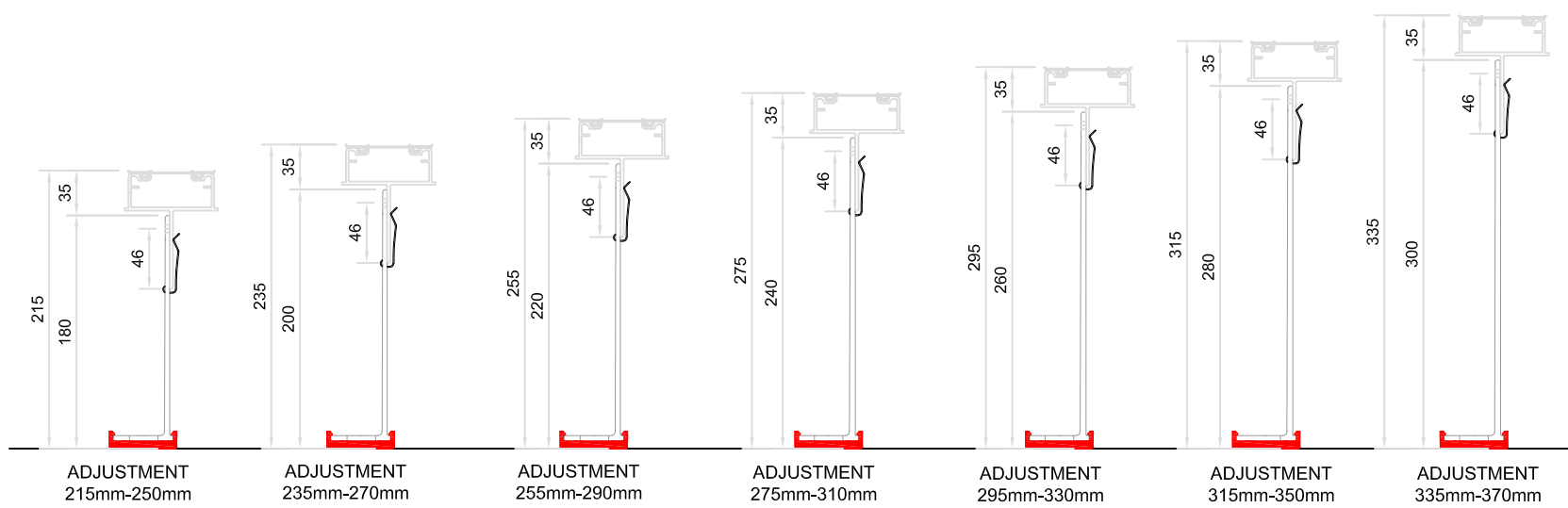
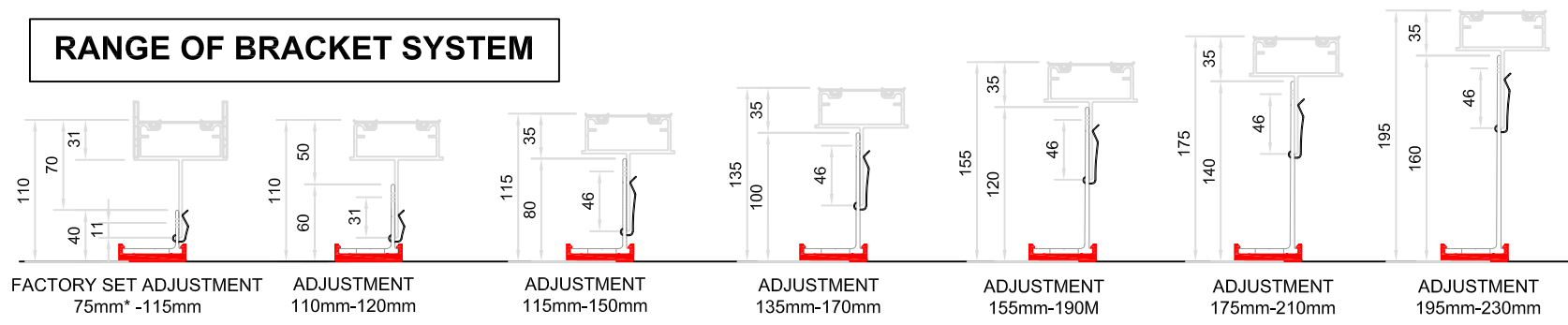


System

**Rear-Ventilated Rainscreen
CS2-1 Extruded Rail "Hook-on" Arrangement**

Drawing No CS2-1-00	Description System Contents Page & Photographs			Revision B	Scale -
Drawn by GMcW	Rev	Description	Date	By	Date
	A	REVISED BRACKET RANGE	16/12/2021	MC	May 2019
	B	DRAWING UPDATED	07/02/2022	LB	

RANGE OF BRACKET SYSTEM



BRACKETS	Adjustment range for each bracket (mm)	
CS2-1 - 40	from 75*	to 115
CS2-1 - 60	from 110	to 120
CS2-1 - 80	from 115	to 150
CS2-1 - 100	from 135	to 170
CS2-1 - 120	from 155	to 190
CS2-1 - 140	from 175	to 210
CS2-1 - 160	from 195	to 230
CS2-1 - 180	from 215	to 250
CS2-1 - 200	from 235	to 270
CS2-1 - 220	from 255	to 290
CS2-1 - 240	from 275	to 310
CS2-1 - 260	from 295	to 330
CS2-1 - 280	from 315	to 350
CS2-1 - 300	from 335	to 370

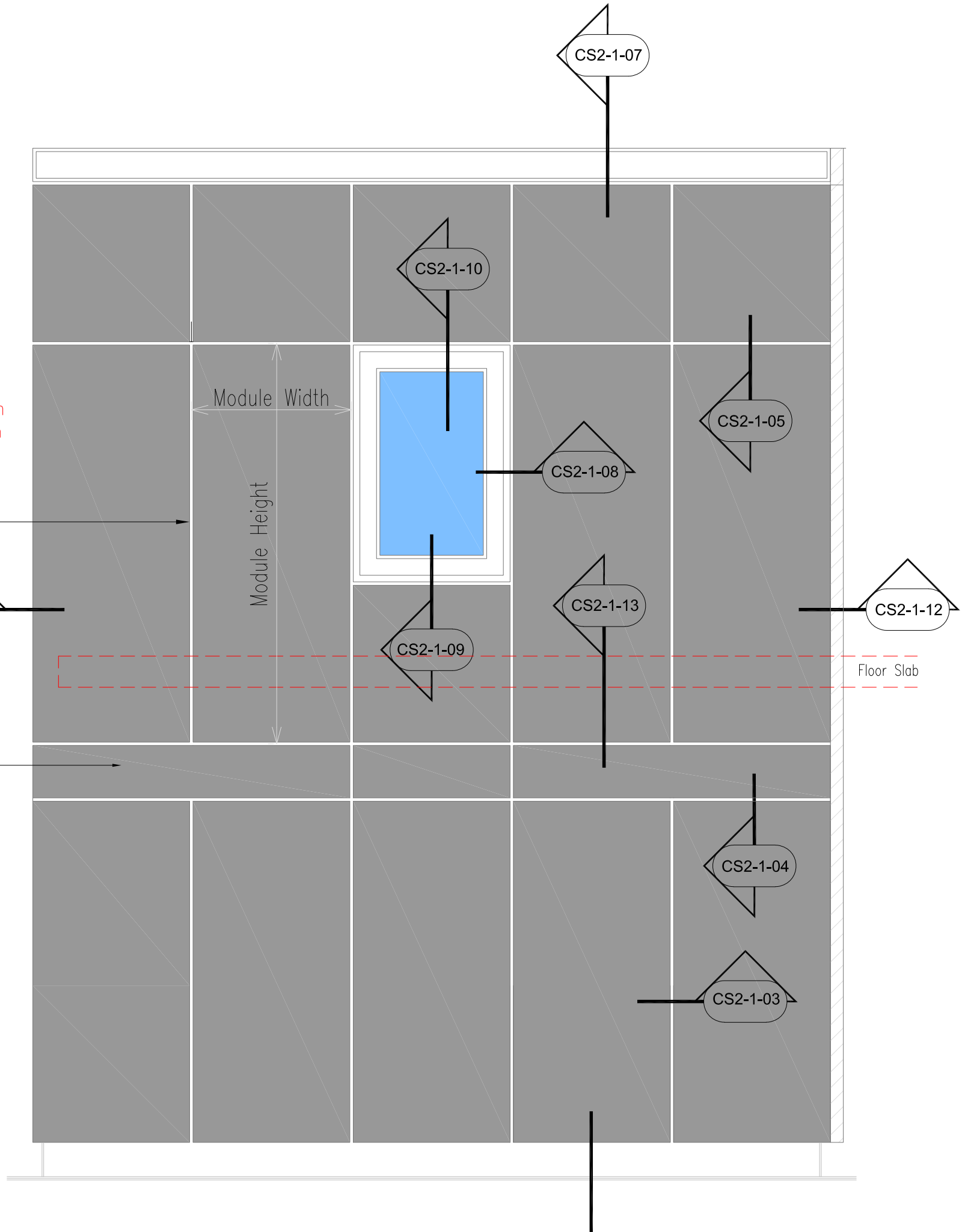
NOTE: -
 DIMENSION RANGES DOES INCLUDE FOR THERMAL PADS



System					
Rear-Ventilated Rainscreen					
CS2-1 Extruded Rail "Hook-on" Arrangement					
Drawing No	Description			Revision	Scale
CS2-1-01	Range of CS2-1 & Bracket System			-	1:5 @ A3
Drawn by	Rev	Description	Date	By	Date
GMcW					May 2019

Portrait Format Panels
 Maximum Module Height -2800mm
 Maximum Module Width -1300mm
 (based on joint width 10 to 20mm)

Landscape Format Panels
 Maximum Module Length -2800mm
 Maximum Module Height -1300mm
 (based on joint width 10 to 20mm)



Elevation on Cladding



System

**Rear-Ventilated Rainscreen
 CS2-1 Extruded Rail "Hook-on" Arrangement**

Drawing No

CS2-1-02

Description

Cladding Detail Locations

Revision

B

Scale

-

Drawn by

GMcW

Rev

A
B

Description

REVISED BRACKET RANGE
DRAWING UPDATED

Date

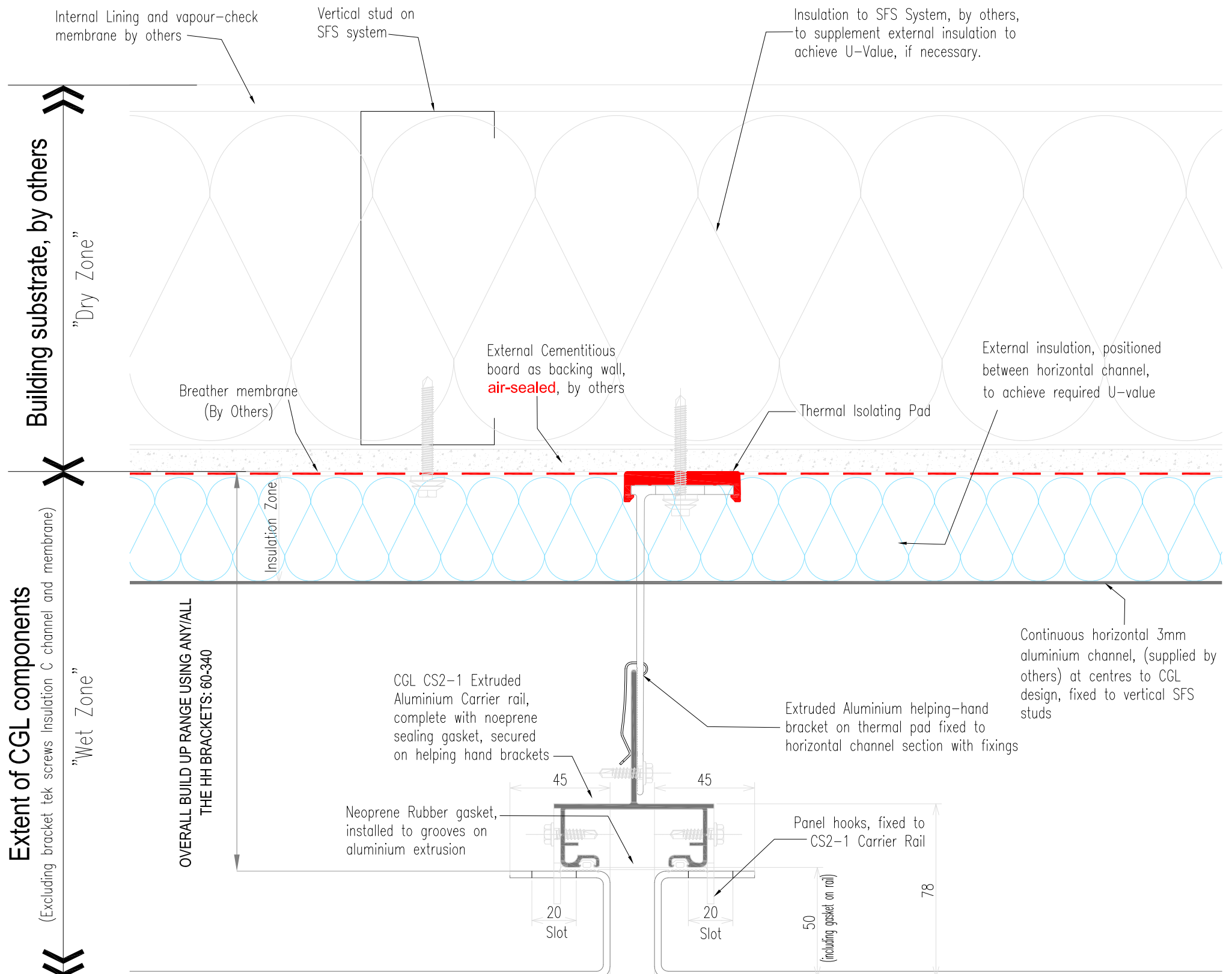
16/12/2021
07/02/2022

By

MC
LB

Date

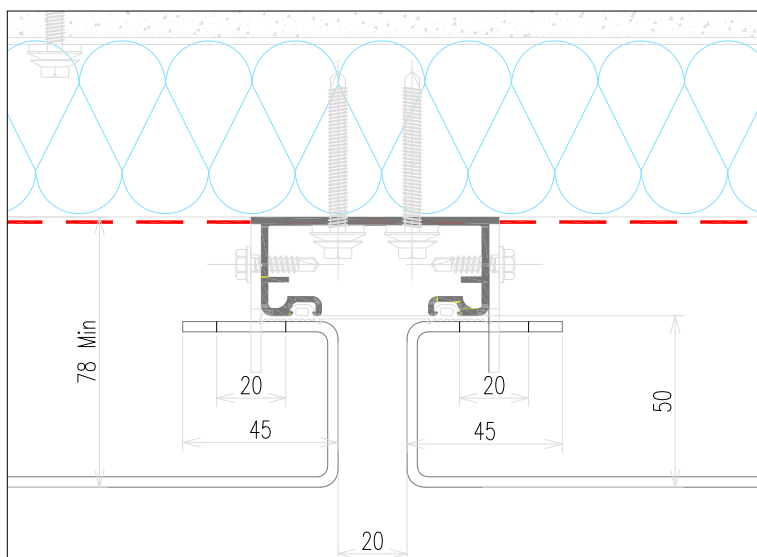
May 2019



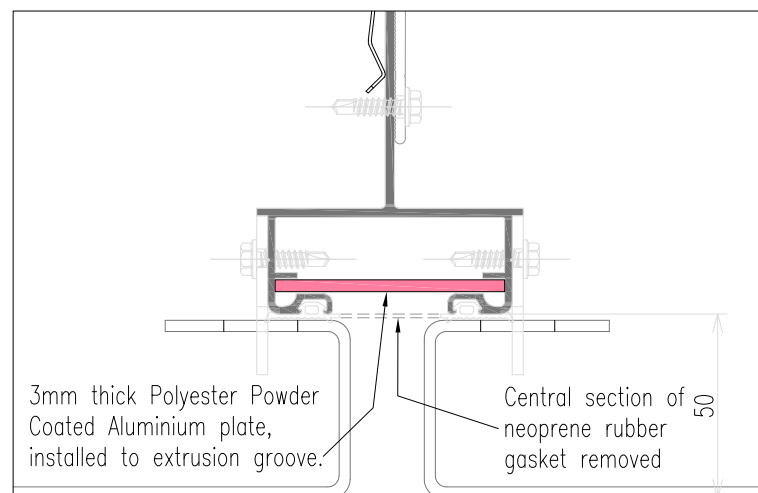
CGL Rainscreen Panel to specification, secured via hooks to CS2-1 Extruded Aluminium Carrier rails

VERTICAL JOINTS
20mm Standard
10mm Minimum
} using standard stock aluminium sheets
joints <10 mm - please consult CGL Facades for advice

CGL Rainscreen Panel to specification, secured via hooks to CS2-1 Extruded Aluminium Carrier rails



LOW ZONE RAIL ARRANGEMENT
(PACKERS CAN BE UTILISED) 1:2

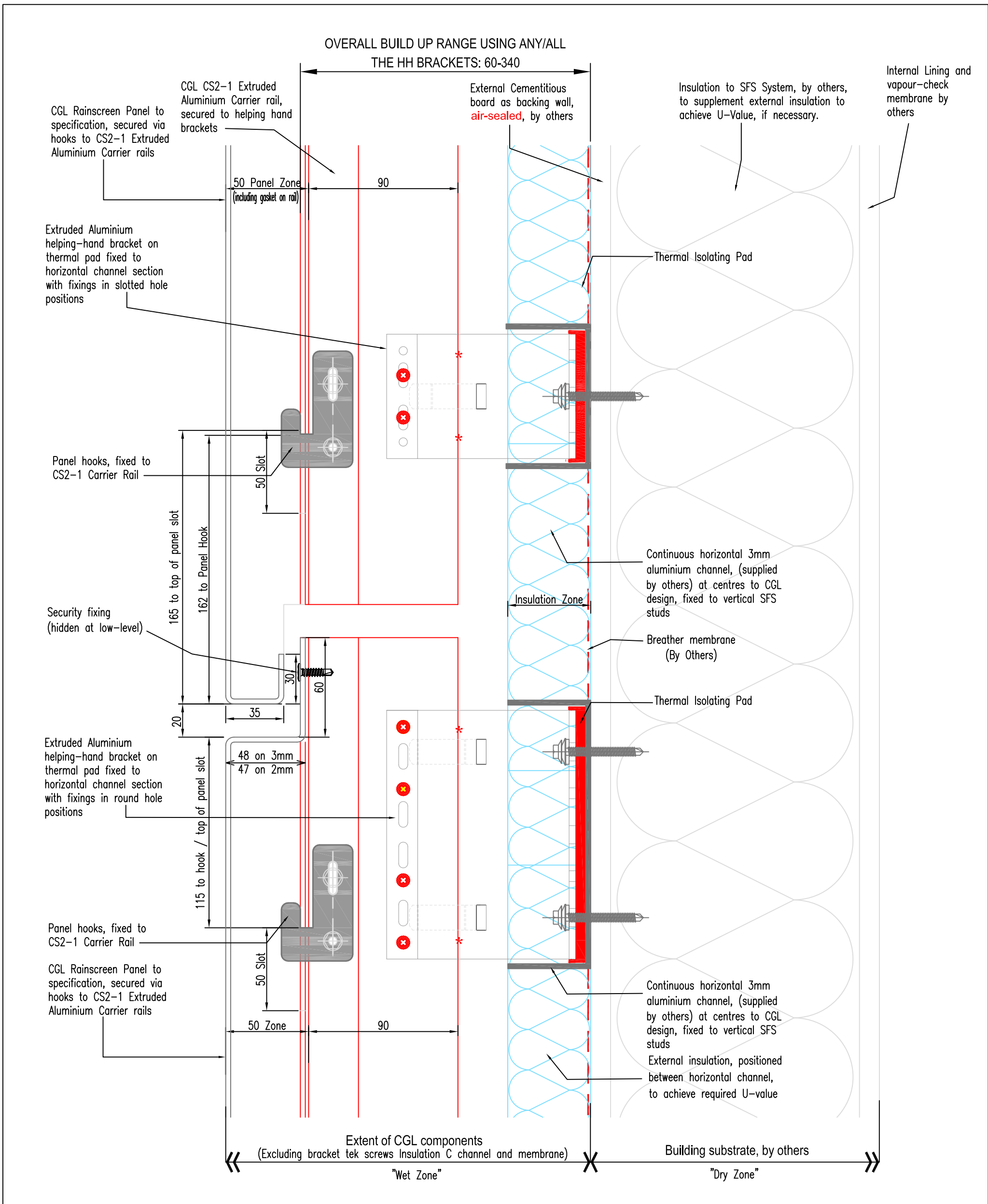


ALTERNATIVE DETAIL TO VERTICAL JOINTS
1:2

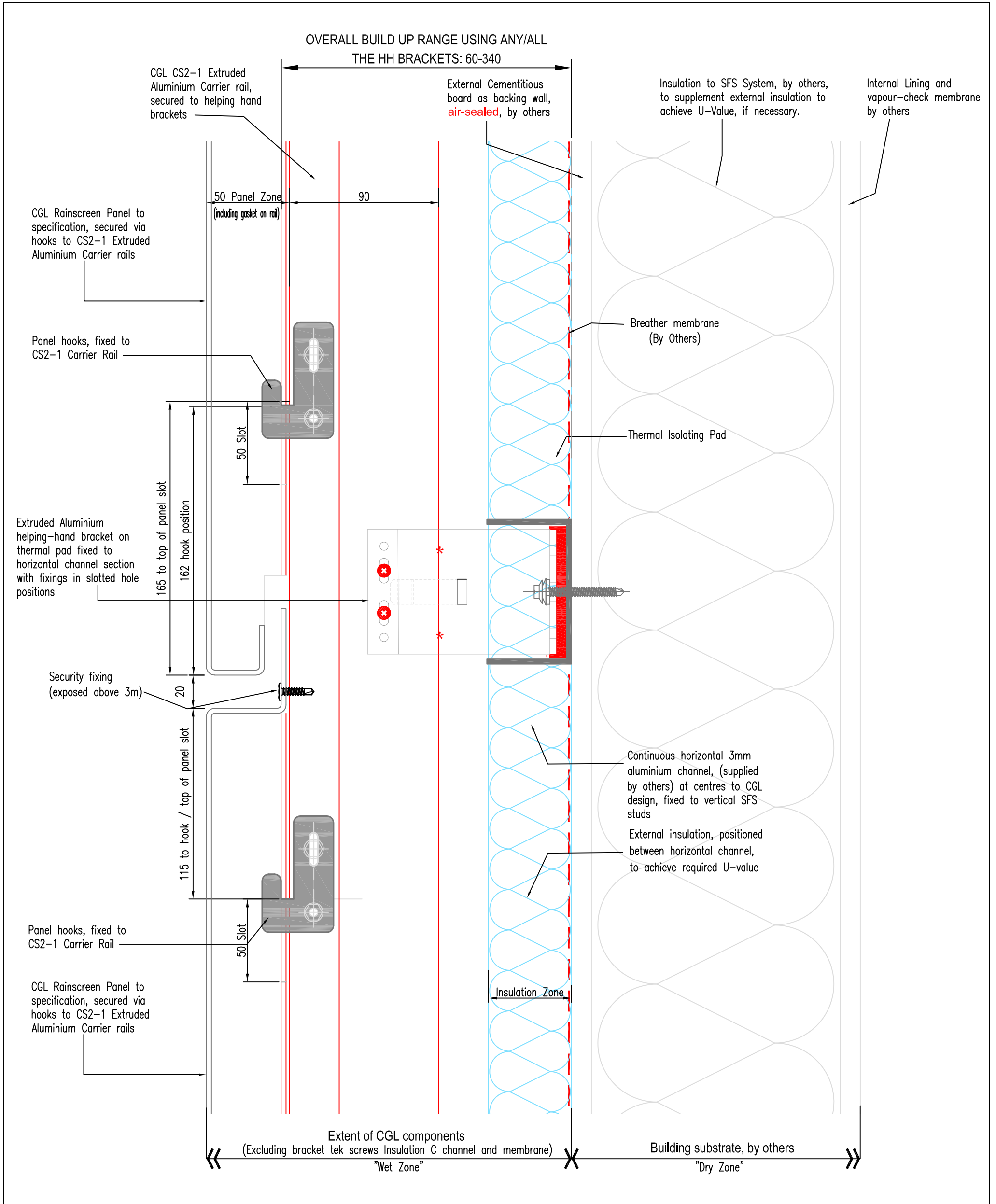


System
Rear-Ventilated Rainscreen
CS2-1 Extruded Rail "Hook-on" Arrangement

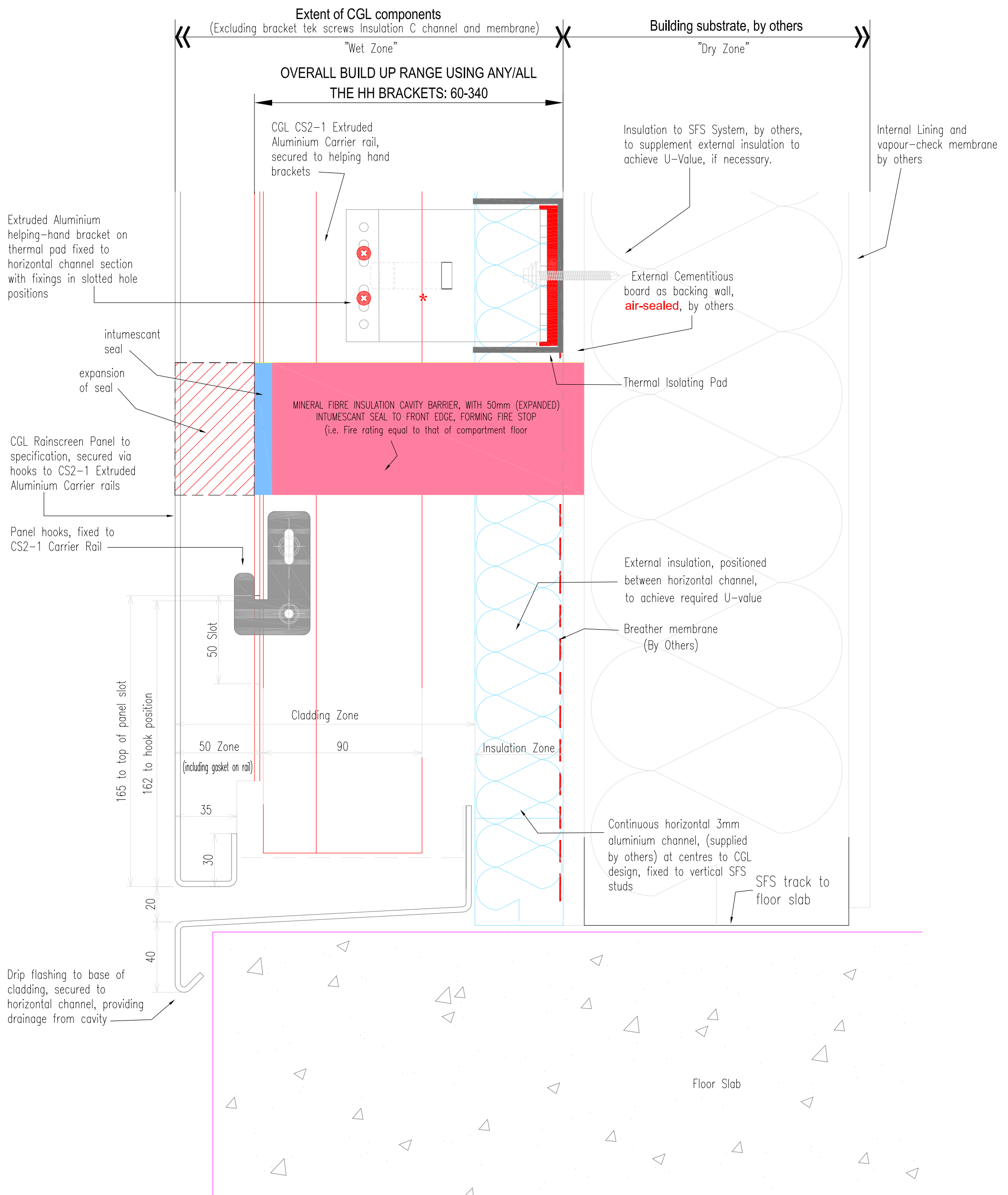
Drawing No CS2-1-03	Description Section at Vertical Joint	Revision B	Scale 1:2 @ A3
Drawn by GMcW	Rev A B	Description REVISED BRACKET RANGE DRAWING UPDATED	Date 16/12/2021 07/02/2022
	By MC LB	Date May 2019	



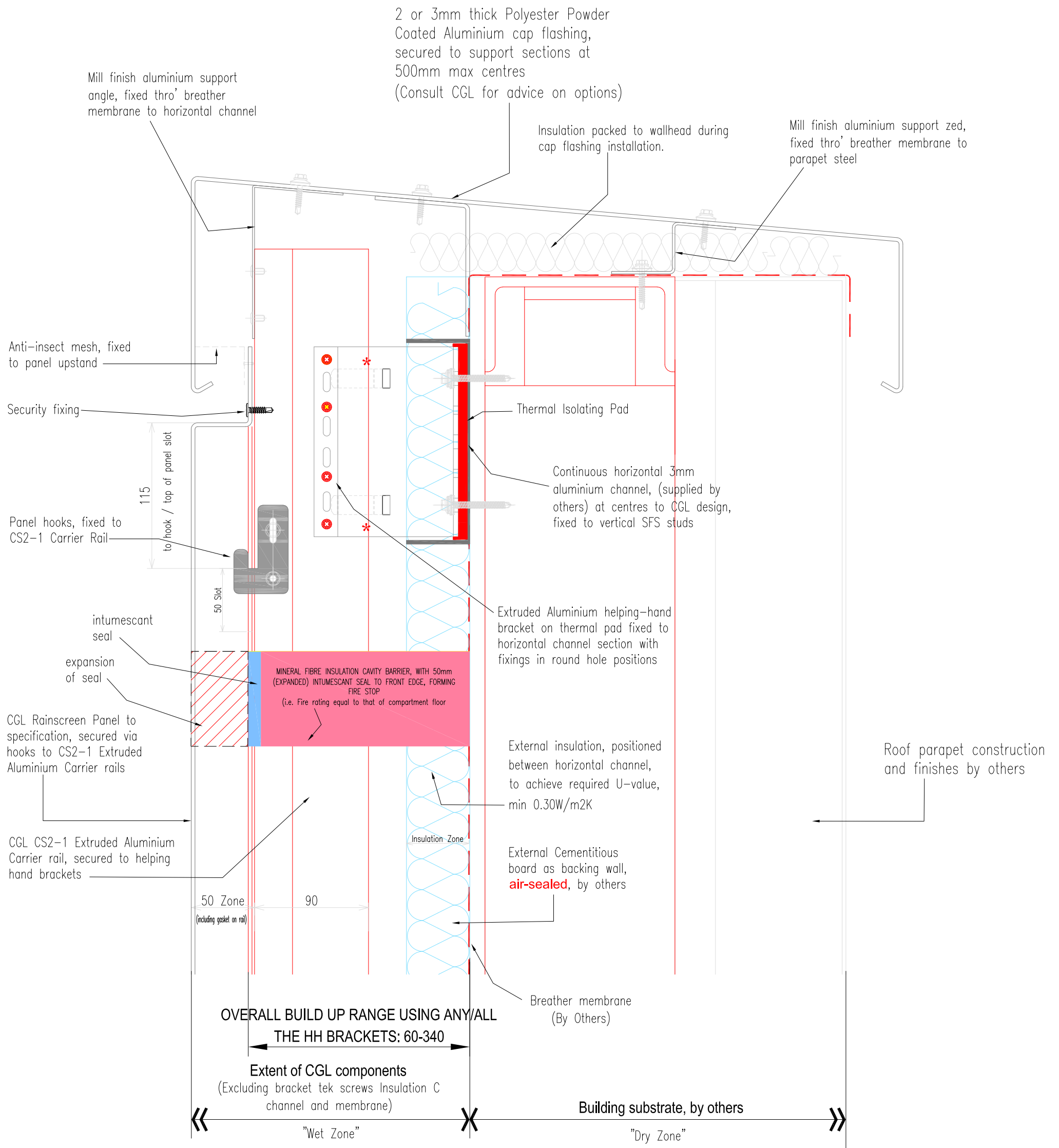
System						
Rear-Ventilated Rainscreen						
CS2-1 Extruded Rail "Hook-on" Arrangement						
Drawing No	Description				Revision	Scale
CS2-1-04	Horizontal Joint at Rail Joints				B	1:2 @ A3
Drawn by	Rev	Description	Date	By	Date	
GMcW	A	REVISED BRACKET RANGE	16/12/2021	MC	May 2019	
	B	DRAWING UPDATED	07/02/2022	LB		



System					
Rear-Ventilated Rainscreen CS2-1 Extruded Rail "Hook-on" Arrangement					
Drawing No		Description		Revision	Scale
CS2-1-05		Horizontal Joint at Mid-rail		B	1:2 @ A3
Drawn by		Rev	Description	Date	By
GMcW		A	REVISED BRACKET RANGE	16/12/2021	MC
		B	DRAWING UPDATED	07/02/2022	LB
				Date	
				May 2019	



System				
Rear-Ventilated Rainscreen CS2-1 Extruded Rail "Hook-on" Arrangement				
Drawing No	Description			Revision
CS2-1-06	Section thro' Base of Cladding			B
Scale	1:2 @ A3			
Drawn by	Rev	Description	Date	By
GMcW	A	REVISED BRACKET RANGE	16/12/2021	MC
	B	DRAWING UPDATED	07/02/2022	LB
Date			Date	
			May 2019	



System

Rear-Ventilated Rainscreen CS2-1 Extruded Rail "Hook-on" Arrangement

Drawing No

CS2-1-07

Description

Section thro' Head of Cladding

Revision

B

Scale

1:3 @ A3

Drawn by

GMcW

Rev

A
B

Description

REVISED BRACKET RANGE
DRAWING UPDATED

Date

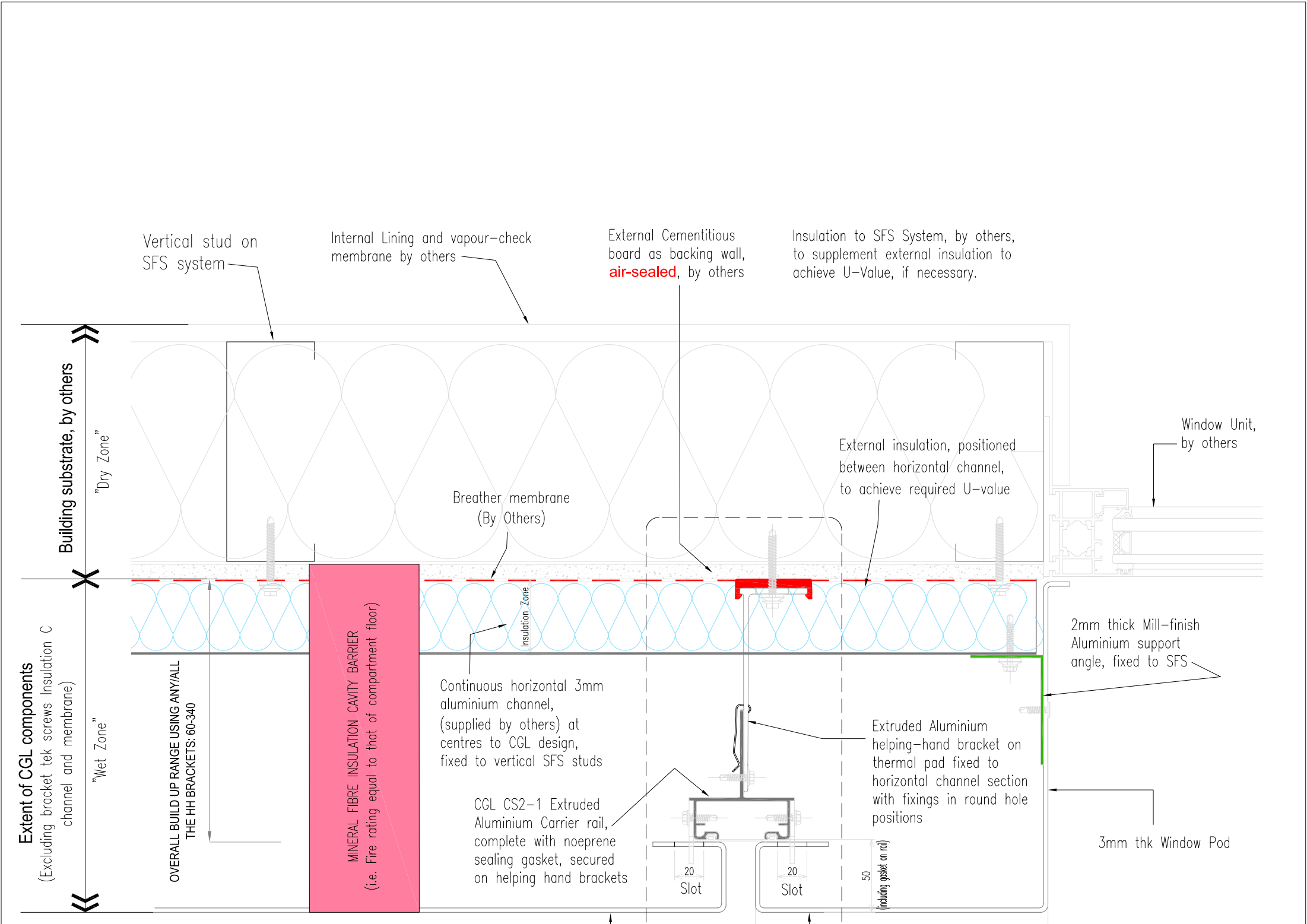
16/12/2021
07/02/2022

By

MC
LB

Date

May 2019



Vertical stud on SFS system

Internal Lining and vapour-check membrane by others

External Cementitious board as backing wall, **air-sealed**, by others

Insulation to SFS System, by others, to supplement external insulation to achieve U-Value, if necessary.

Building substrate, by others

"Dry Zone"

Breather membrane (By Others)

External insulation, positioned between horizontal channel, to achieve required U-value

Window Unit, by others

2mm thick Mill-finish Aluminium support angle, fixed to SFS

3mm thk Window Pod

Extruded Aluminium helping-hand bracket on thermal pad fixed to horizontal channel section with fixings in round hole positions

Continuous horizontal 3mm aluminium channel, (supplied by others) at centres to CGL design, fixed to vertical SFS studs

CGL CS2-1 Extruded Aluminium Carrier rail, complete with neoprene sealing gasket, secured on helping hand brackets

20 Slot

20 Slot

50 (including gasket on rail)

200 maximum

Joint as Detail CS2-1-03

CGL Rainscreen Window Pod to specification, secured via hooks to CS2-1 Extruded Aluminium Carrier rail

MINERAL FIBRE INSULATION CAVITY BARRIER (i.e. Fire rating equal to that of compartment floor)

OVERALL BUILD UP RANGE USING ANY/ALL THE HH BRACKETS: 60-340

"Wet Zone"

Extent of CGL components (Excluding bracket tek screws Insulation C channel and membrane)

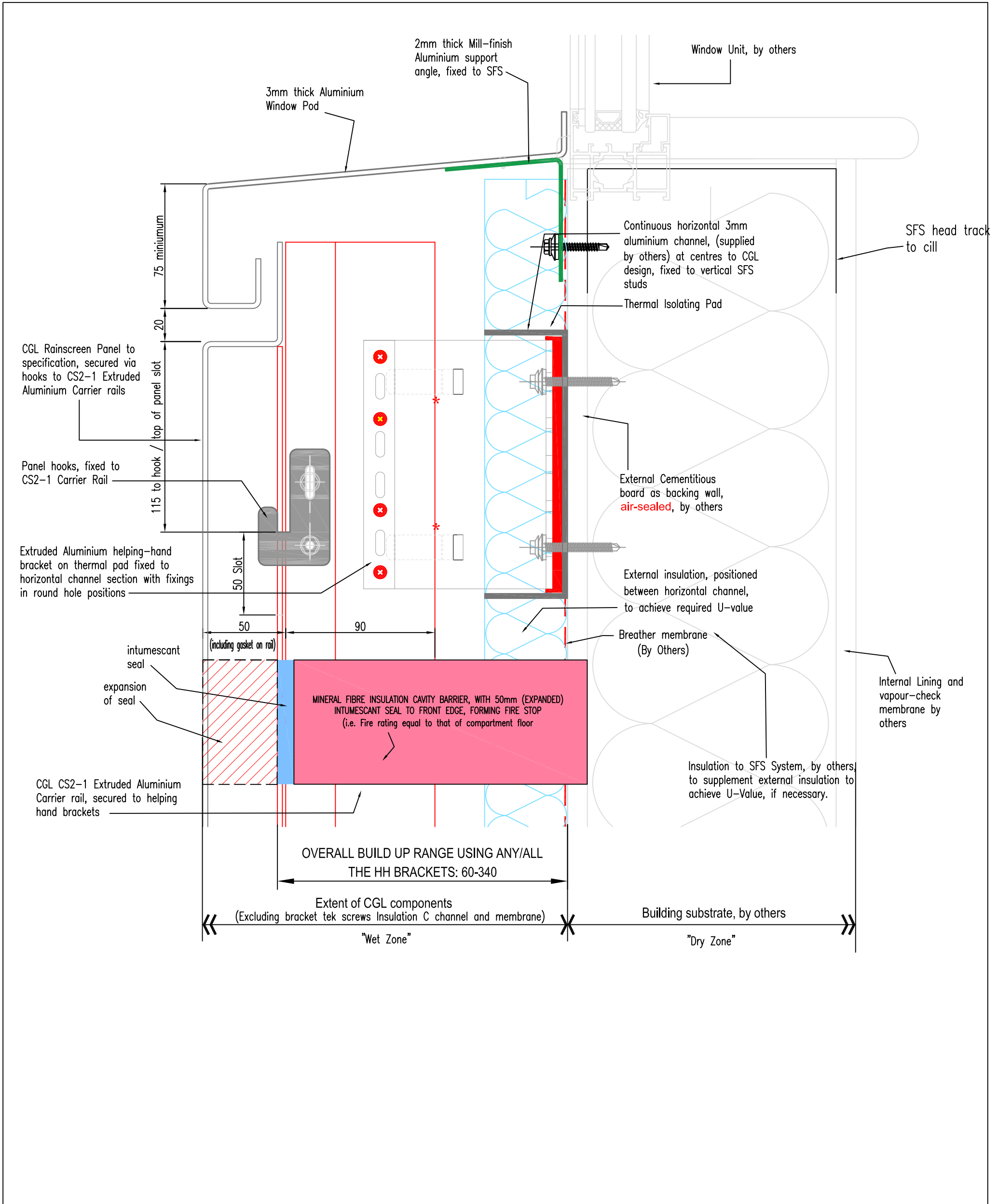
CGL Rainscreen Panel to specification, secured via hooks to CS2-1 Extruded Aluminium Carrier rails



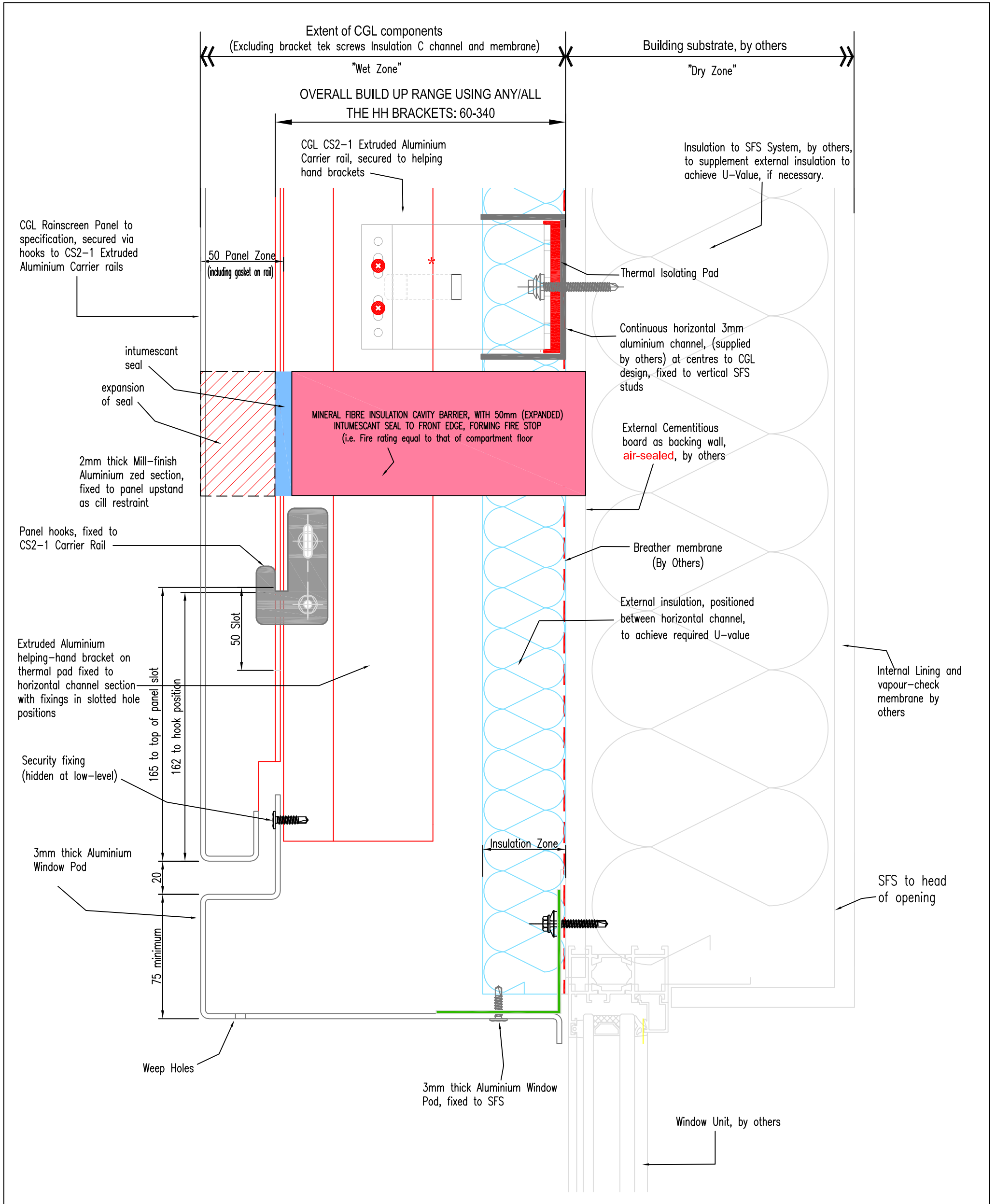
System
**Rear-Ventilated Rainscreen
 CS2-1 Extruded Rail "Hook-on" Arrangement**

Drawing No CS2-1-08	Description Section at Window Jamb	Revision B	Scale 1:3 @ A3
-------------------------------	--	----------------------	--------------------------

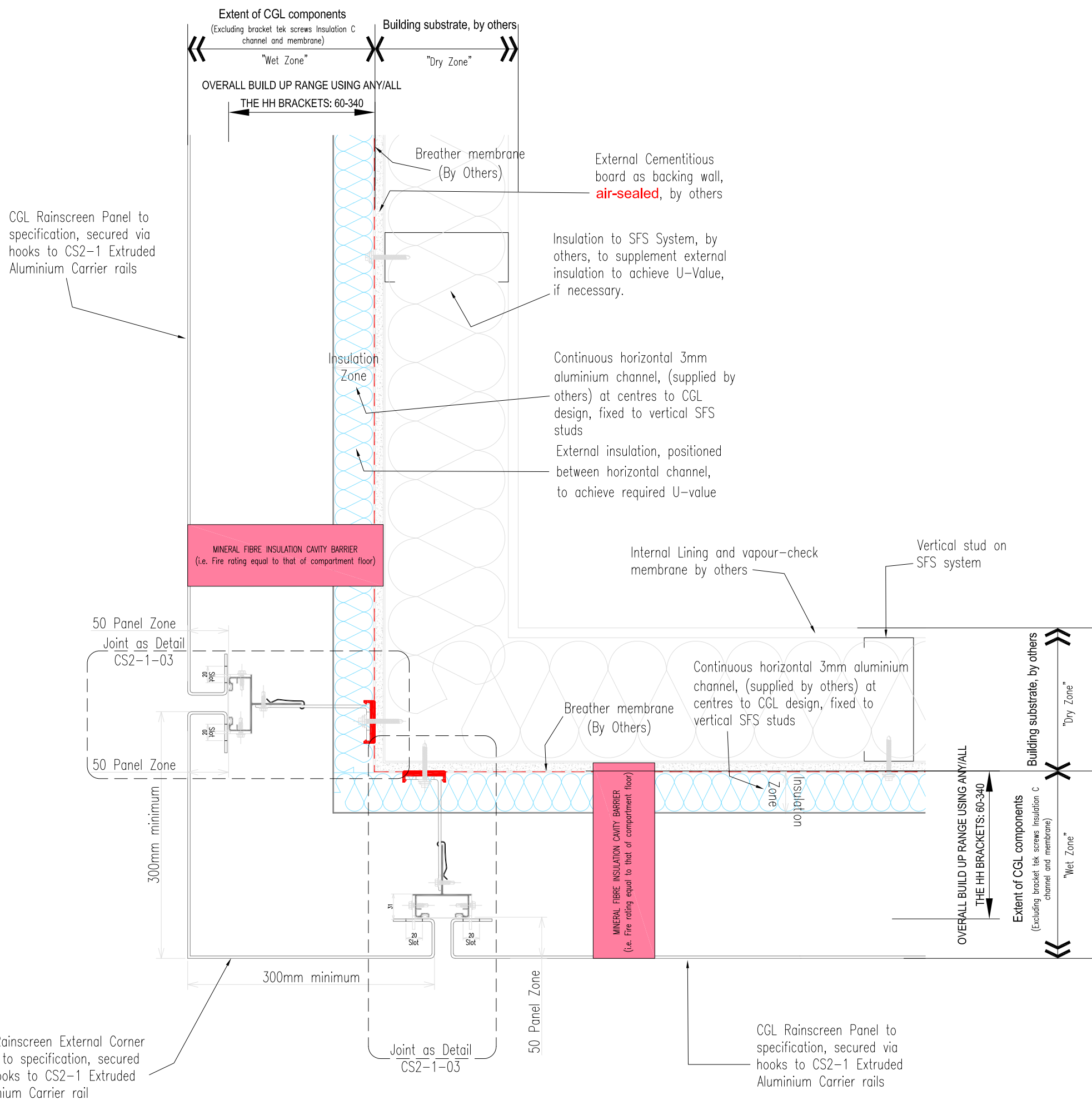
Drawn by GMcW	Rev	Description	Date	By	Date
	A	REVISED BRACKET RANGE	16/12/2021	MC	May 2019
B	DRAWING UPDATED	07/02/2022	LB		



System					
Rear-Ventilated Rainscreen					
CS2-1 Extruded Rail "Hook-on" Arrangement					
Drawing No		Description		Revision	Scale
CS2-1-09		Section at Window Cill		B	1:2 @ A3
Drawn by		Rev	Description	Date	By
GMcW		A	REVISED BRACKET RANGE	16/12/2021	MC
		B	DRAWING UPDATED	07/02/2022	LB
				Date	
				May 2019	



System					
Rear-Ventilated Rainscreen CS2-1 Extruded Rail "Hook-on" Arrangement					
Drawing No		Description		Revision	Scale
CS2-1-10		Section at Window Head		B	1:2 @ A3
Drawn by		Rev	Description	Date	By
GMcW		A	REVISED BRACKET RANGE	16/12/2021	MC
		B	DRAWING UPDATED	07/02/2022	LB
				Date	
				May 2019	

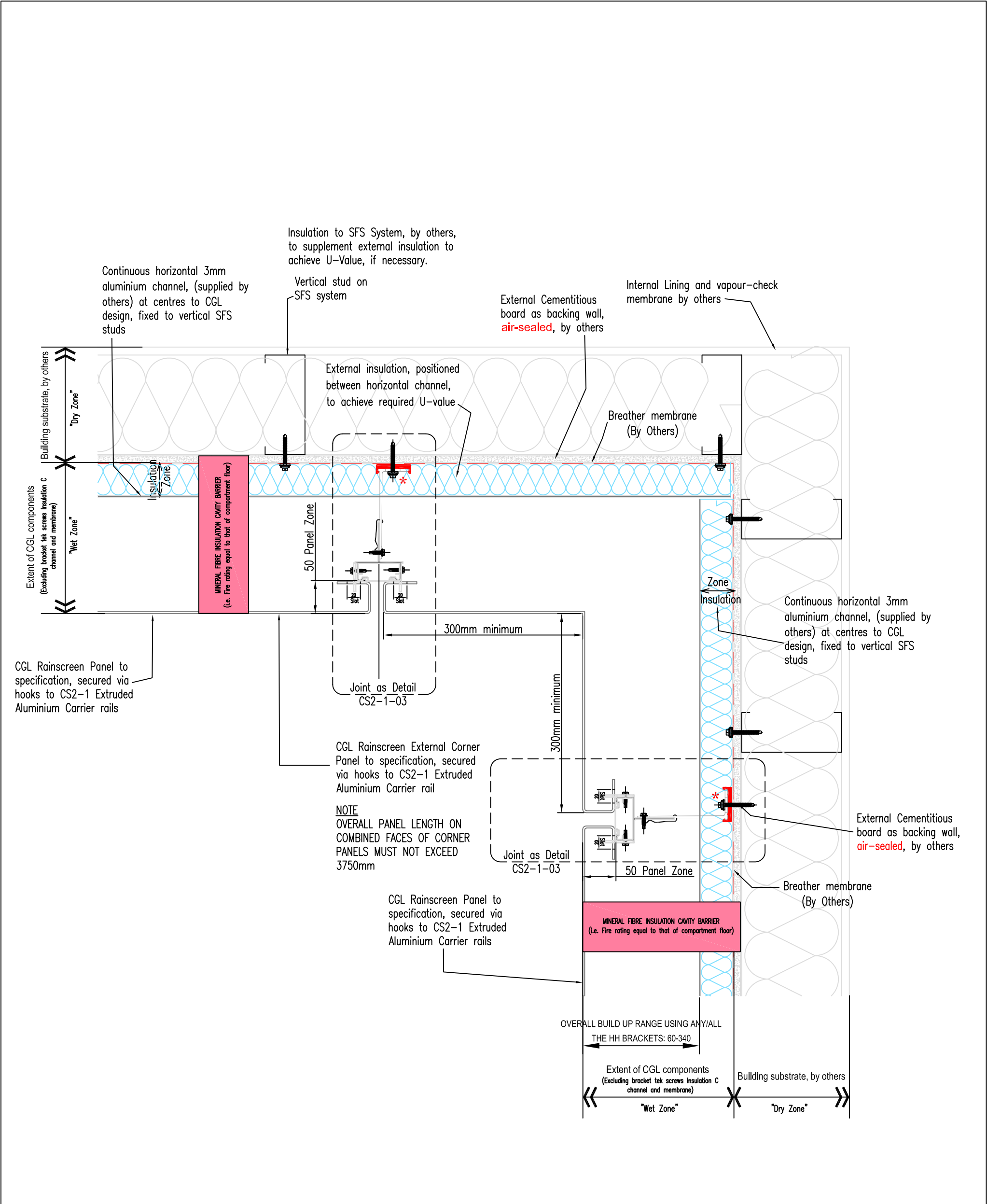


CGL Rainscreen External Corner Panel to specification, secured via hooks to CS2-1 Extruded Aluminium Carrier rail

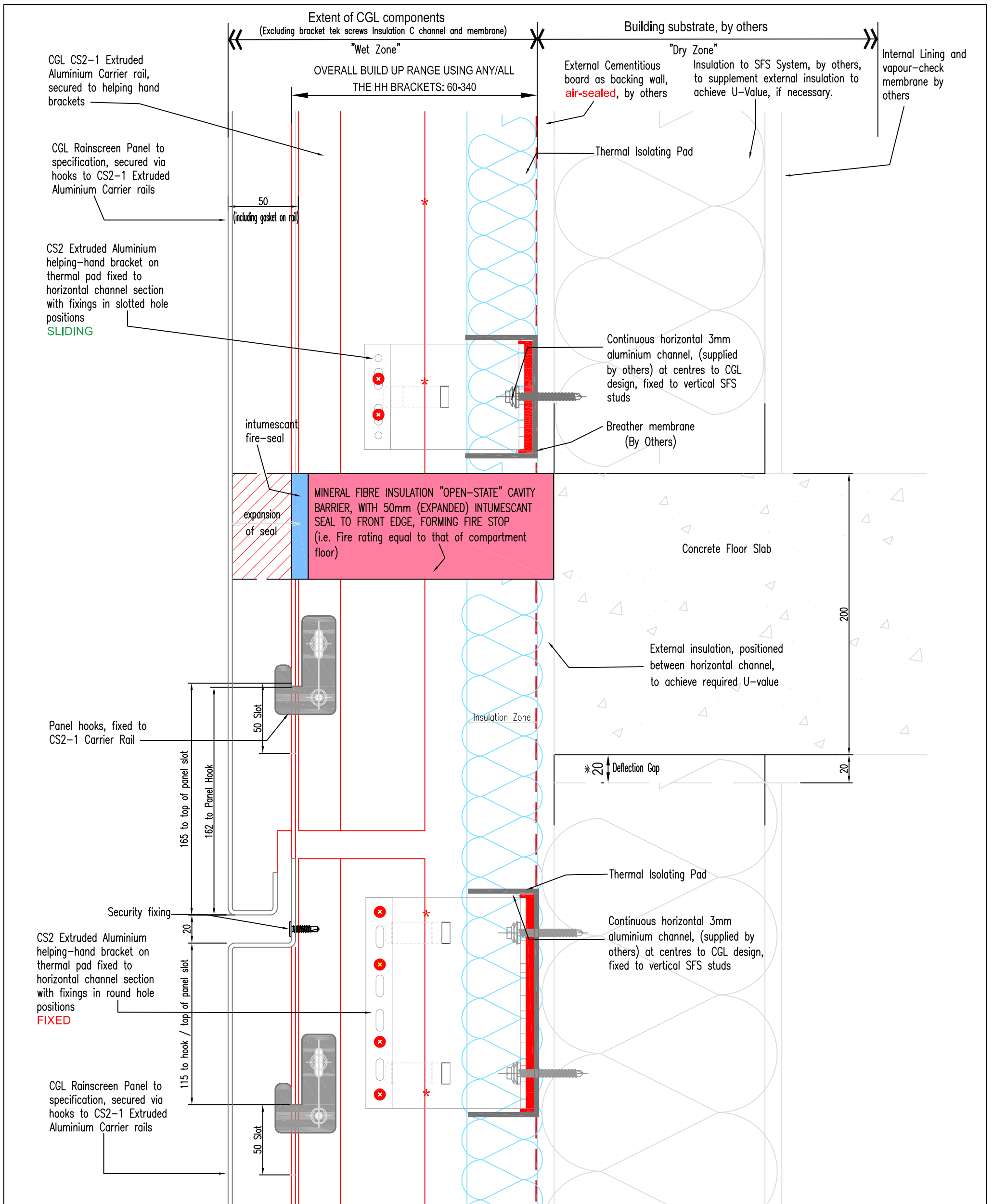
NOTE
OVERALL PANEL LENGTH ON COMBINED FACES OF CORNER PANELS MUST NOT EXCEED 3750mm



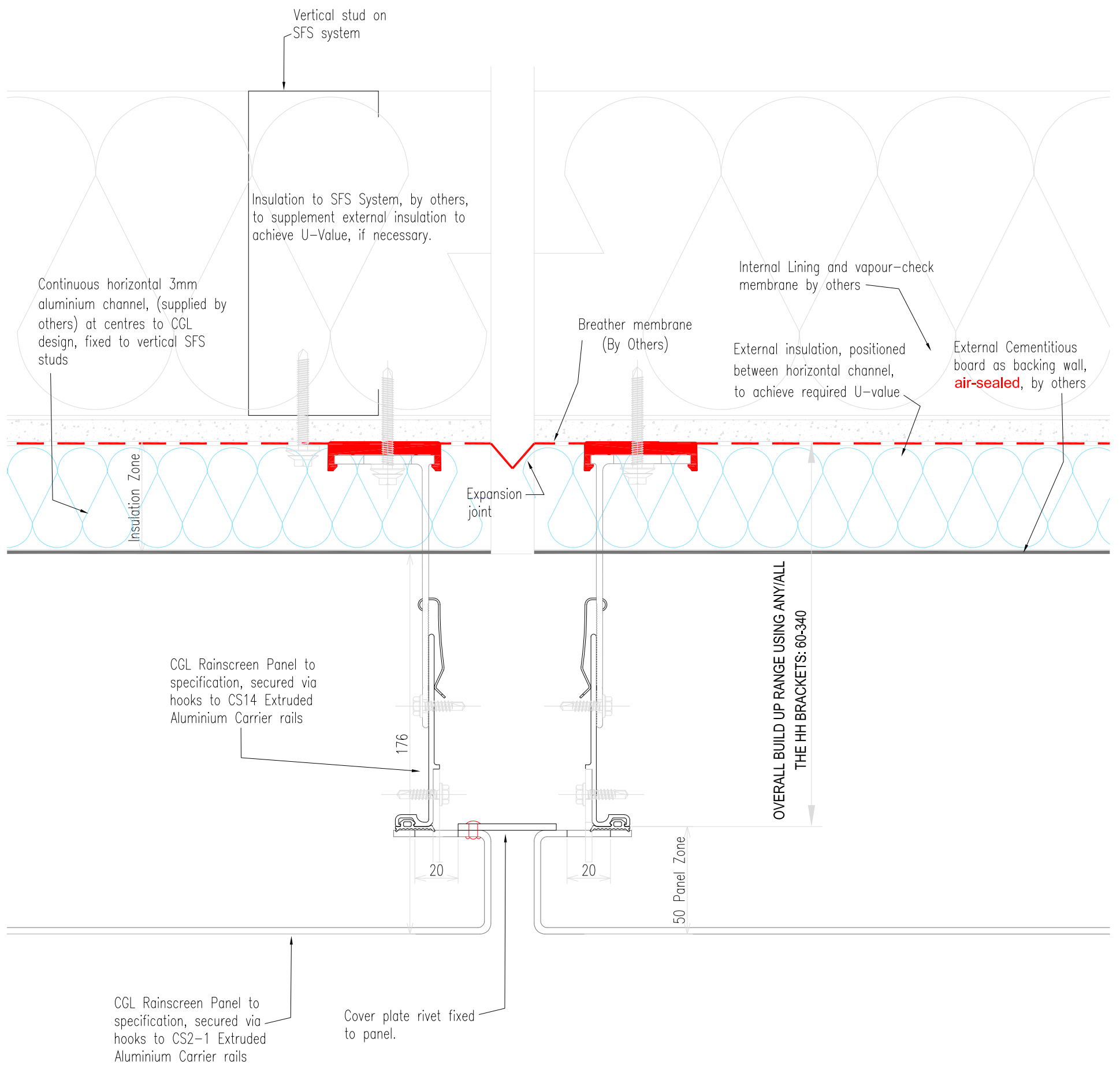
System					
Rear-Ventilated Rainscreen CS2-1 Extruded Rail "Hook-on" Arrangement					
Drawing No	Description			Revision	Scale
CS2-1-11	External Corner			B	1:5 @ A3
Drawn by	Rev	Description	Date	By	Date
GMcW	A	REVISED BRACKET RANGE	16/12/2021	MC	May 2019
	B	DRAWING UPDATED	07/02/2022	LB	



System					
Rear-Ventilated Rainscreen CS2-1 Extruded Rail "Hook-on" Arrangement					
Drawing No		Description		Revision	Scale
CS2-1-12		Internal Corner		B	1:5 @ A3
Drawn by		Rev	Description	Date	By
GMcW		A	REVISED BRACKET RANGE	16/12/2021	MC
		B	DRAWING UPDATED	07/02/2022	LB
				Date	
				May 2019	



System					
Rear-Ventilated Rainscreen					
CS2-1 Extruded Rail "Hook-on" Arrangement					
Drawing No	Description			Revision	Scale
CS2-1-13	Detail at Floor Level including Fire Stop and Deflection Detail			B	1:2 @ A3
Drawn by	Rev	Description	Date	By	Date
GMcW	A	REVISED BRACKET RANGE	16/12/2021	MC	May 2019
	B	DRAWING UPDATED	07/02/2022	LB	



System
Rear-Ventilated Rainscreen
CS2-1 Extruded Rail "Hook-on" Arrangement

Drawing No CS2-1-14	Description Vertical Expansion Joint			Revision B	Scale 1:5 @ A3
Drawn by GMcW	Rev A	Description REVISED BRACKET RANGE	Date 16/12/2021	By MC	Date May 2019
	Rev B	DESCRIPTION DRAWING UPDATED	Date 07/02/2022	By LB	