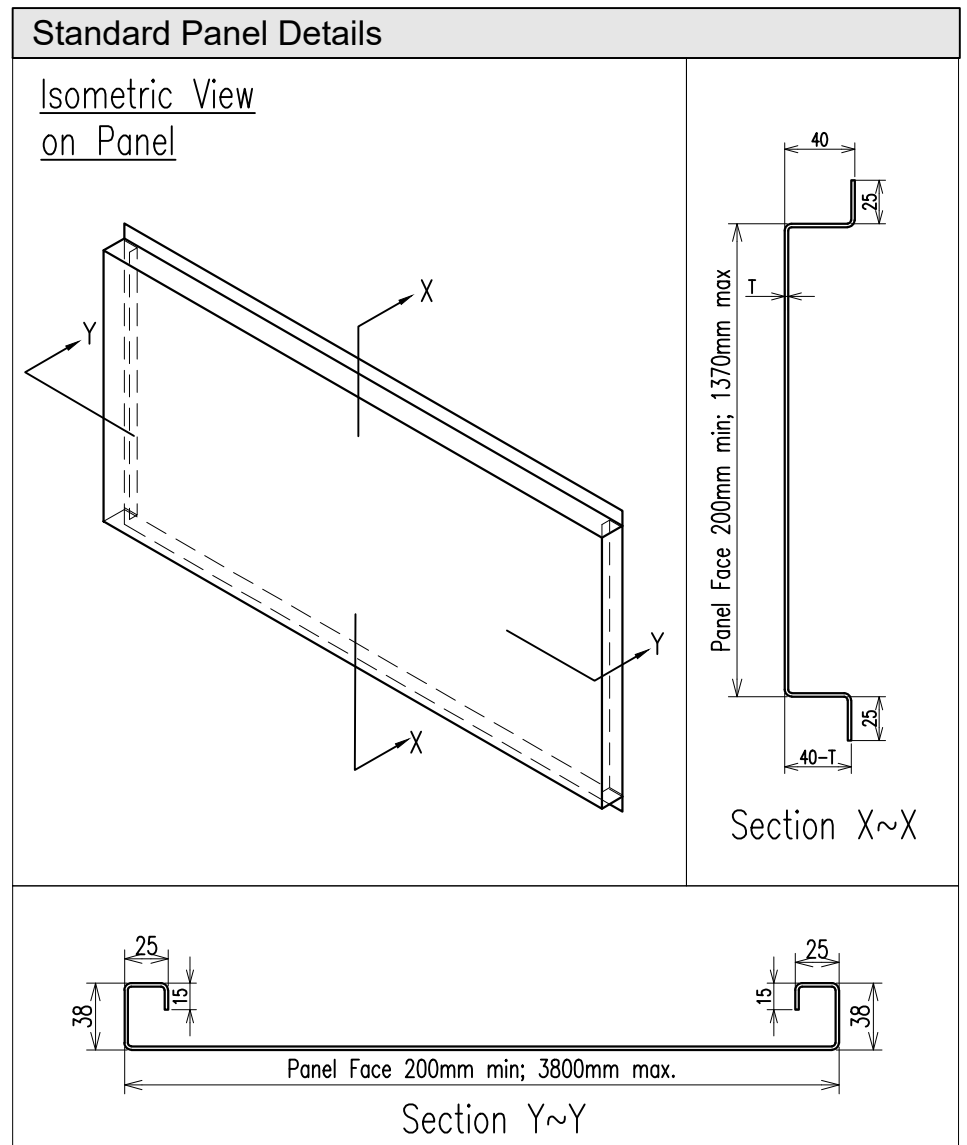


CGL Facades

Rear-Ventilated Aluminium Horizontal TrayPanel System

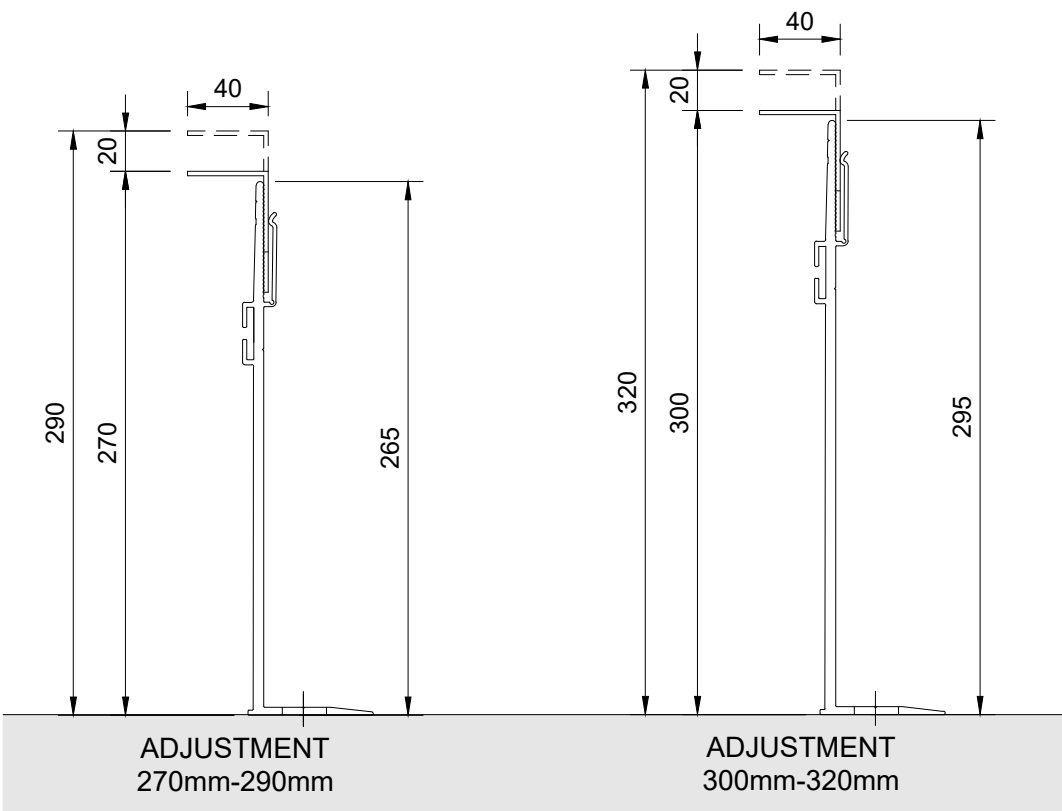
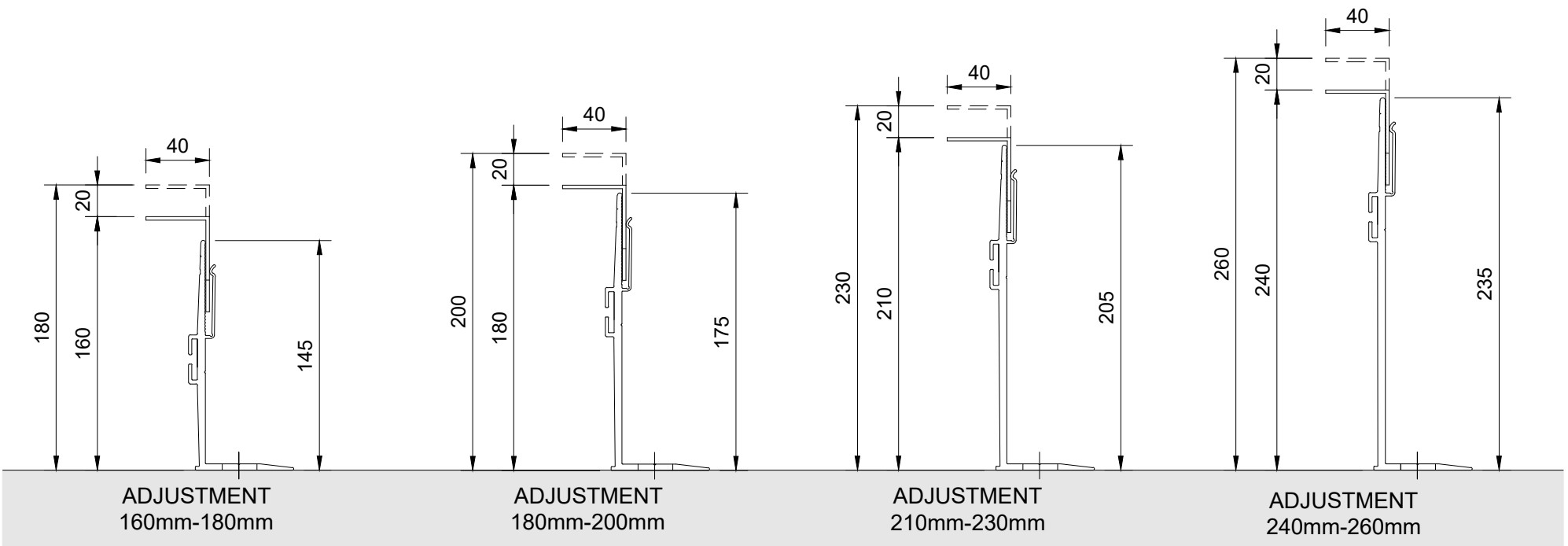
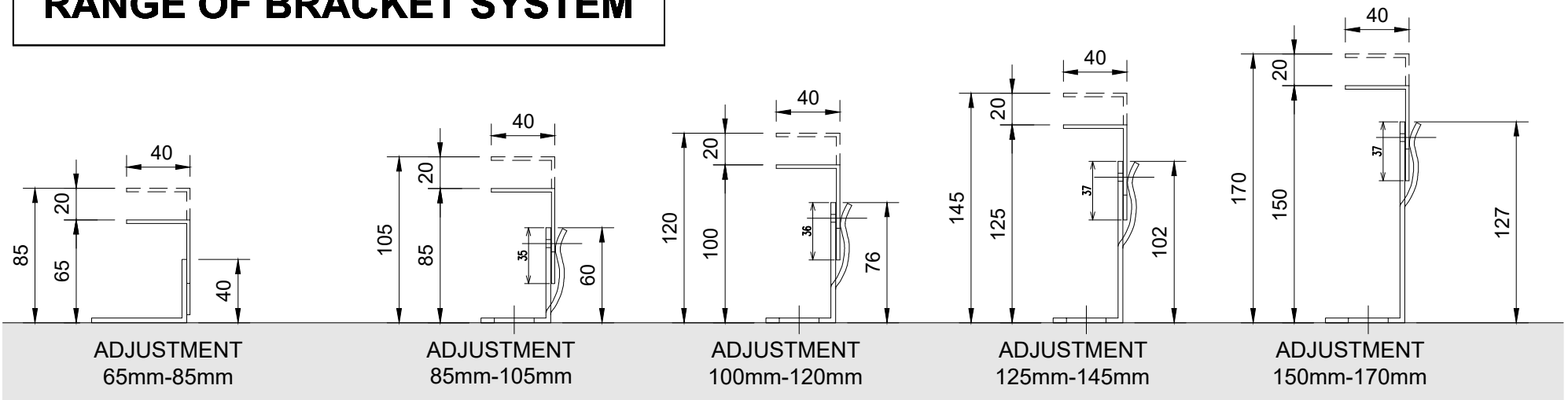
Contents

- TP-H-00 - System Contents & Photographs
- TP-H-01 - Range of Bracket System
- TP-H-02 - Cladding Detail Locations
- TP-H-03 - Section at Vertical Joint
- TP-H-04 - Section at Horizontal Joint
- TP-H-05 - Deflection Detail at Floor Slab (including Fire-Stop)
- TP-H-06 - Section thro' Vertical Expansion Joint
- TP-H-07 - Section at Base of Cladding
- TP-H-08 - Section at Head of Cladding
- TP-H-09 - Vertical Section thro' Window
- TP-H-10 - Window Jamb Detail
- TP-H-11 - External Corner
- TP-H-12 - Internal Corner



<h1 style="margin: 0;">CGL FACADES</h1>	System Rear-Ventilated Facade Horizontal TrayPanel System				
	Drawing No TP-H-00	Description System Contents Page	Revision -	Scale -	
2 Young Place, Kelvin Industrial Estate, East Kilbride, G75 0TD Tel 01355 235561 email: sales@cglfacades.com	Drawn by GMcW	Rev Description	Date	By	Date January 2019

RANGE OF BRACKET SYSTEM



BRACKETS	Adjustment range for each bracket (mm)	
WP - 40	from 65	to 85
WP - 60	from 85	to 105
WP - 76	from 100	to 120
WP - 102	from 125	to 145
WP - 127	from 150	to 170
WP - 145	from 160	to 180
WP - 175	from 180	to 200
WP - 205	from 210	to 230
WP - 235	from 240	to 260
WP - 265	from 270	to 290
WP - 295	from 300	to 320

NOTES: -

- BASED ON 60mm DEEP ANGLE SECTIONS (60x40mm)
- DIMENSION RANGES DO NOT INCLUDE FOR THERMAL PADS

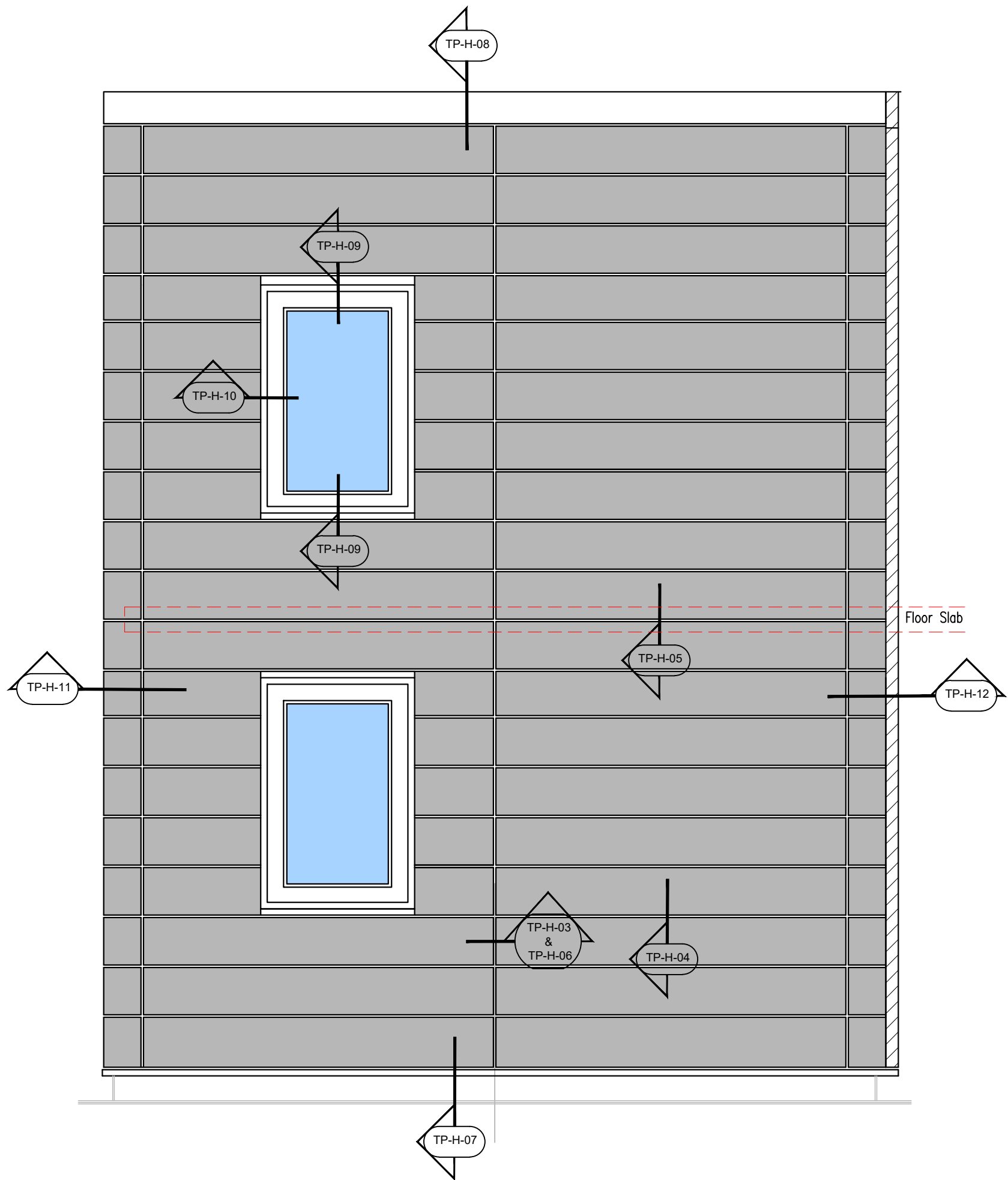
ISOLATOR PADS
 5mm OR 10mm thick
 CUT TO SIZE TO SUIT BRACKET BASE LEG.
 Available in the following dimensions
 40 x 80; 40 x 160; 50 x 80; 50 x 160; 60 x 80 OR 60 x 160

CGL FACADES

2 Young Place, Kelvin Industrial Estate,
 East Kilbride, G75 0TD
 Tel 01355 235561 email: sales@cglfacades.com

System
 Rear-Ventilated Facade
 Horizontal TrayPanel System

Drawing No	Description			Revision	Scale
TP-H-01	Range of Bracket System			A	-
Drawn by	Rev	Description	Date	By	Date
GMcW	A	Upper limits altered	06/08/2018	GMcW	August 2018



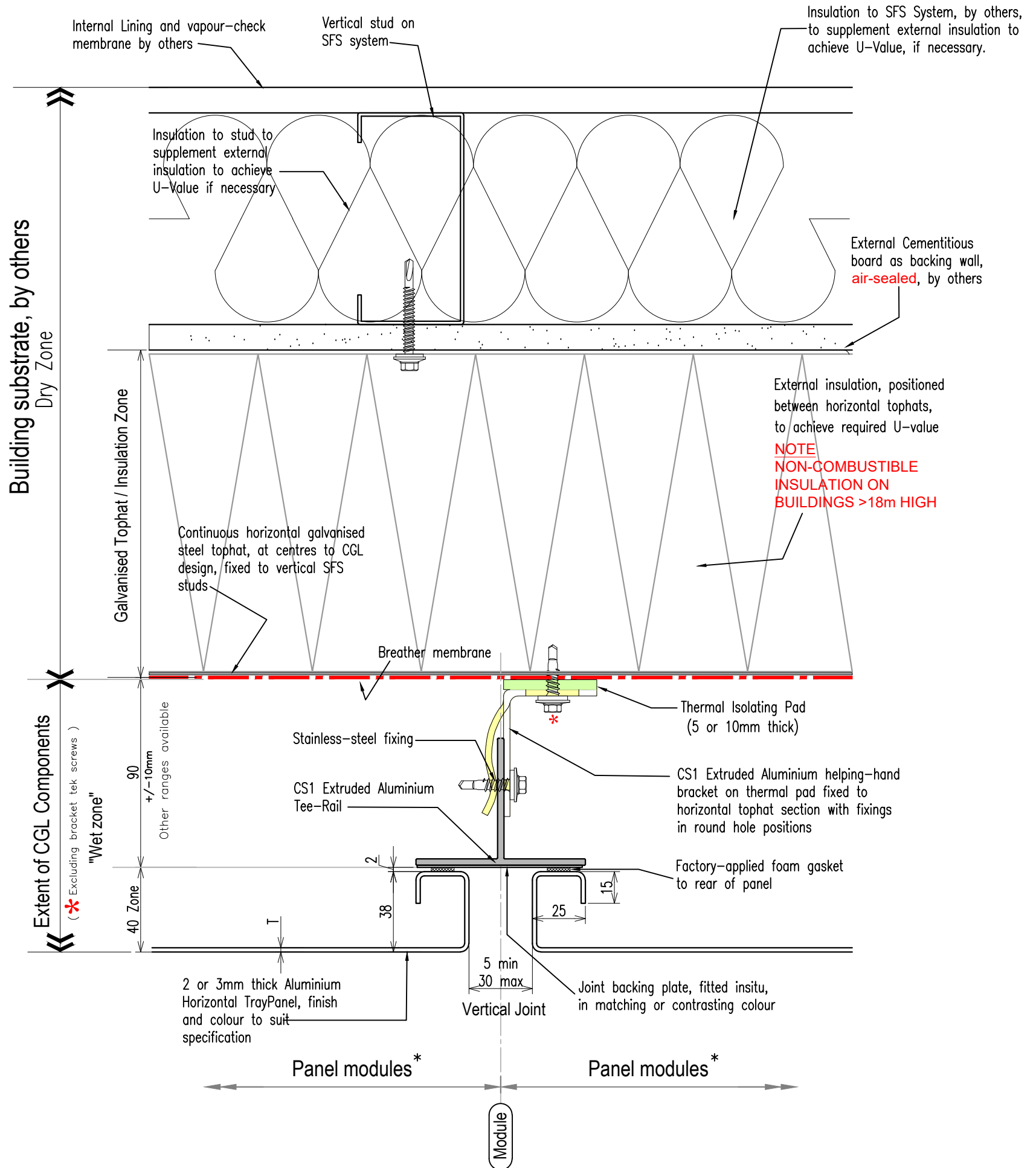
Elevation on Cladding

CGL FACADES

System
Rear-Ventilated Facade
Horizontal TrayPanel System

2 Young Place, Kelvin Industrial Estate,
East Kilbride, G75 0TD
Tel 01355 235561 email: sales@cglfacades.com

Drawing No	Description			Revision	Scale
TP-H-02	Cladding Detail Locations			-	-
Drawn by	Rev	Description	Date	By	Date
GMcW					January 2019



Notes:

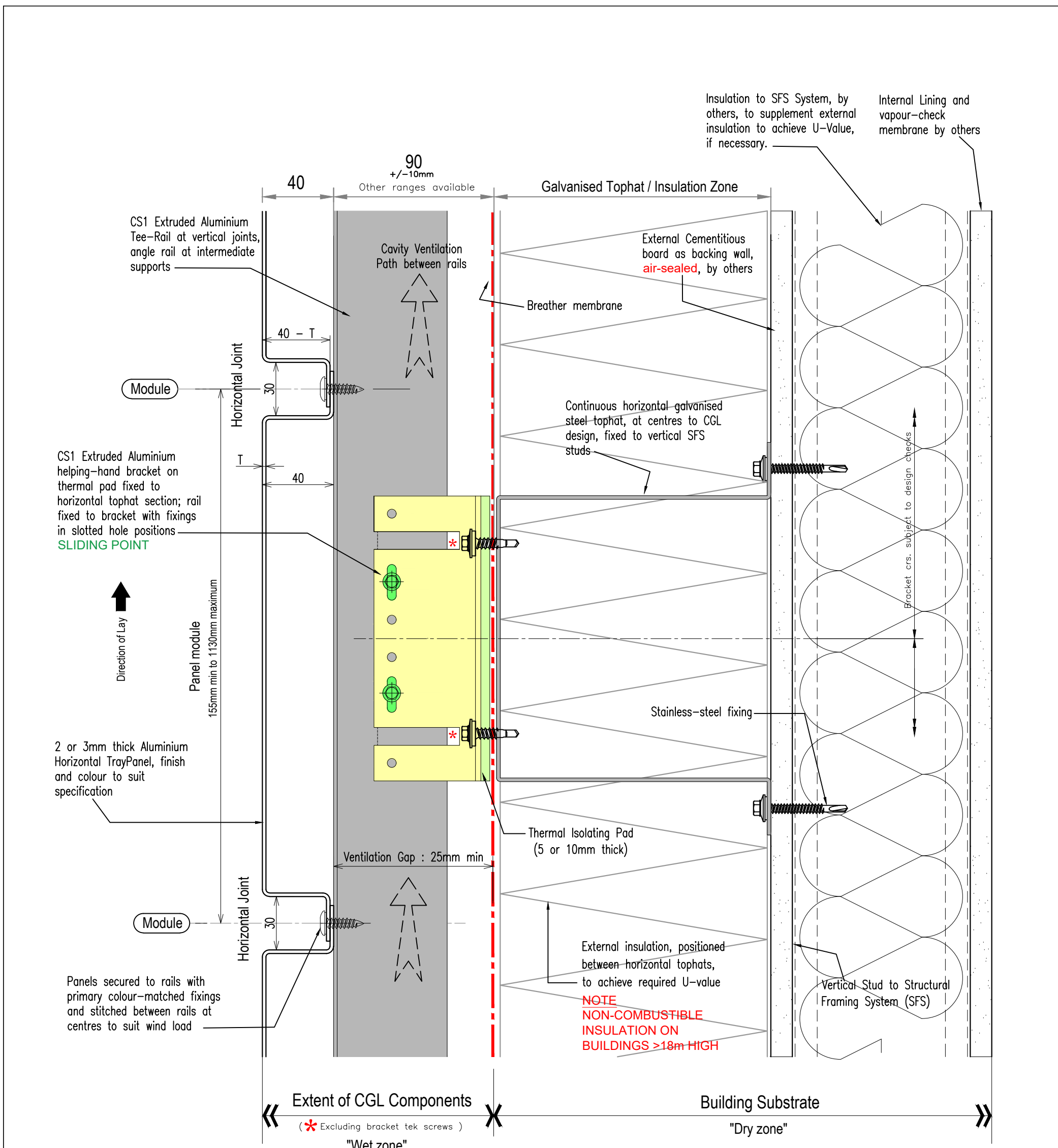
- * For panel module parameters refer to "Systems Overview" document.
- Non CGL components are indicative and subject to contractors project specification

CGL FACADES

System
Rear-Ventilated Facade
Horizontal TrayPanel System

Drawing No	Description	Revision	Scale
TP-H-03	Section at Vertical Joint	-	1:2 @ A3
Drawn by	Rev	Description	Date
GMcW			
			By
			Date
			January 2019

2 Young Place, Kelvin Industrial Estate,
East Kilbride, G75 0TD
Tel 01355 235561 email: sales@cglfacades.com

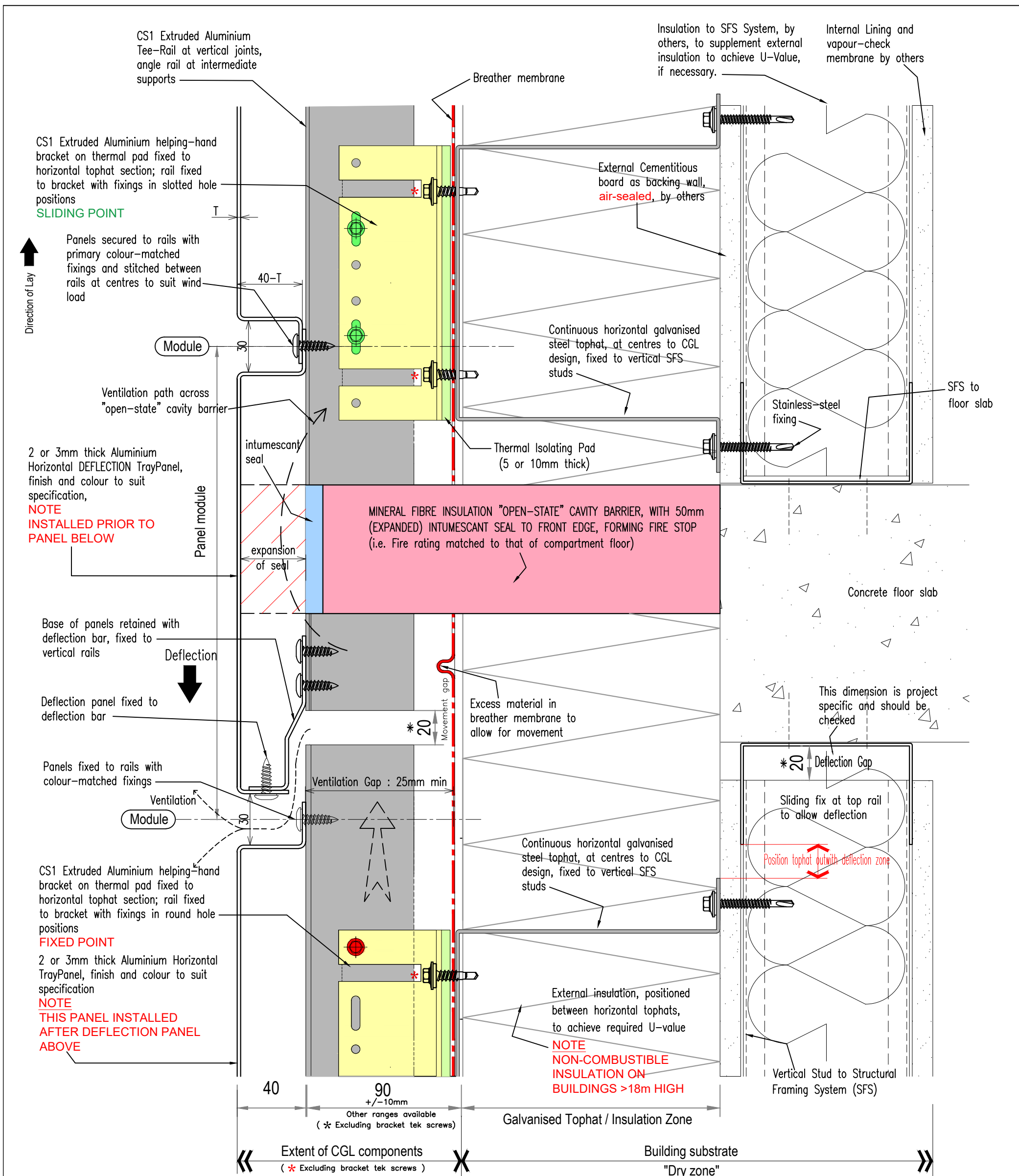


Notes:

Non CGL components are indicative and subject to contractors project specification

CS1 grid system is multifunctional and movement is reviewed on a project-specific basis

<h1 style="margin: 0;">CGL FACADES</h1>	System		Rear-Ventilated Facade Horizontal TrayPanel System				
	Drawing No	Description	Revision	Scale			
	TP-H-04	Section at Horizontal Joint	-	1:2 @ A3			
2 Young Place, Kelvin Industrial Estate, East Kilbride, G75 0TD Tel 01355 235561 email: sales@cglfacades.com		Drawn by	Rev	Description	Date	By	Date
		GMcW					January 2019



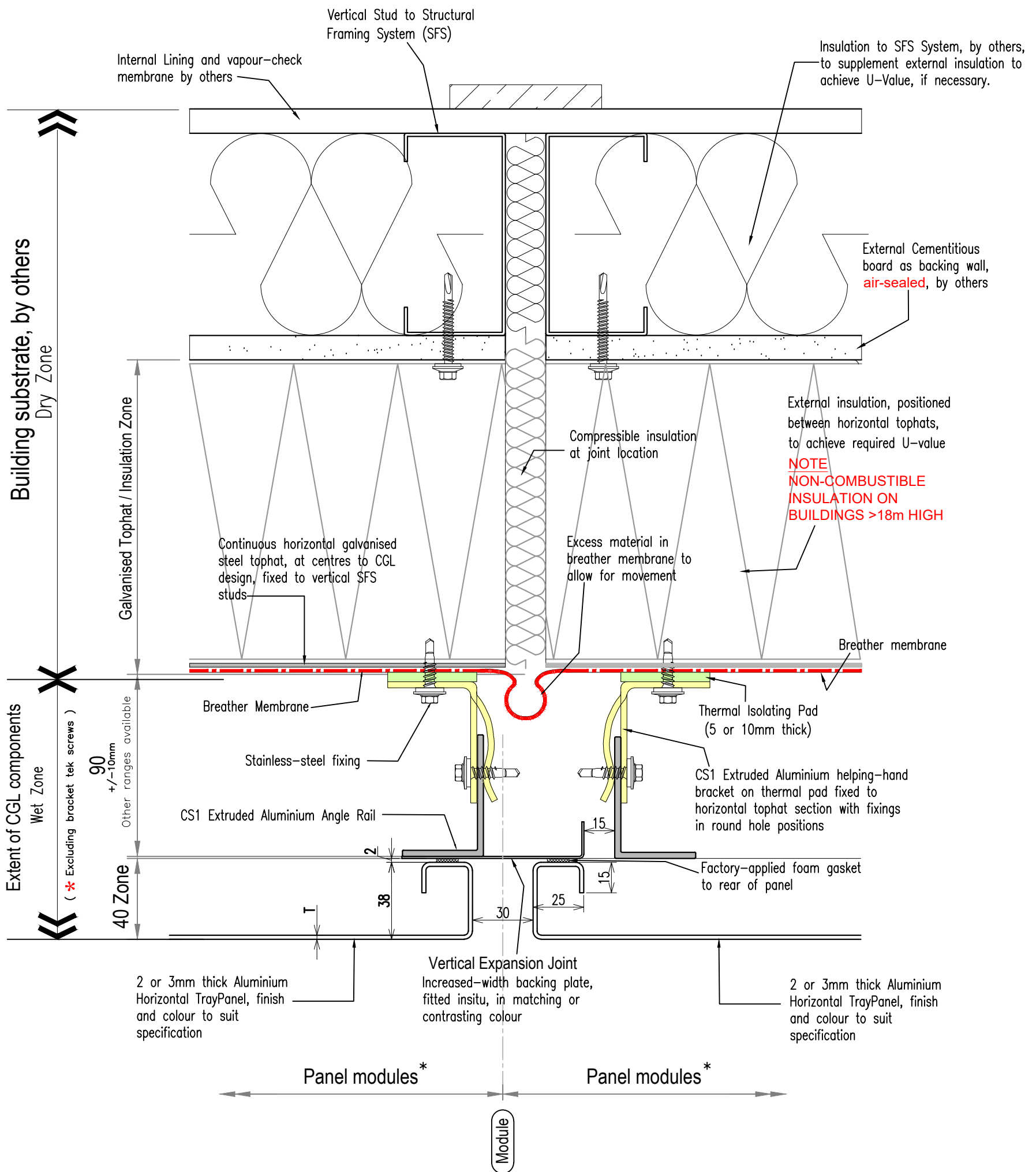
Notes:
 * = Movement joints must be co-ordinated.
 For panel module parameters refer to "Systems Overview" document.
 Non CGL components are indicative and subject to contractors project specification

CS1 grid system is multifunctional and movement is reviewed on a project-specific basis

CGL FACADES

2 Young Place, Kelvin Industrial Estate,
 East Kilbride, G75 0TD
 Tel 01355 235561 email: sales@cglfacades.com

System		Rear-Ventilated Facade Horizontal TrayPanel System	
Drawing No	Description	Revision	Scale
TP-H-05	Deflection Detail at Floor Slab (incorporating fire stop arrangement)	-	1:2 @ A3
Drawn by	Rev	Description	Date
GMcW			January 2019



Notes:

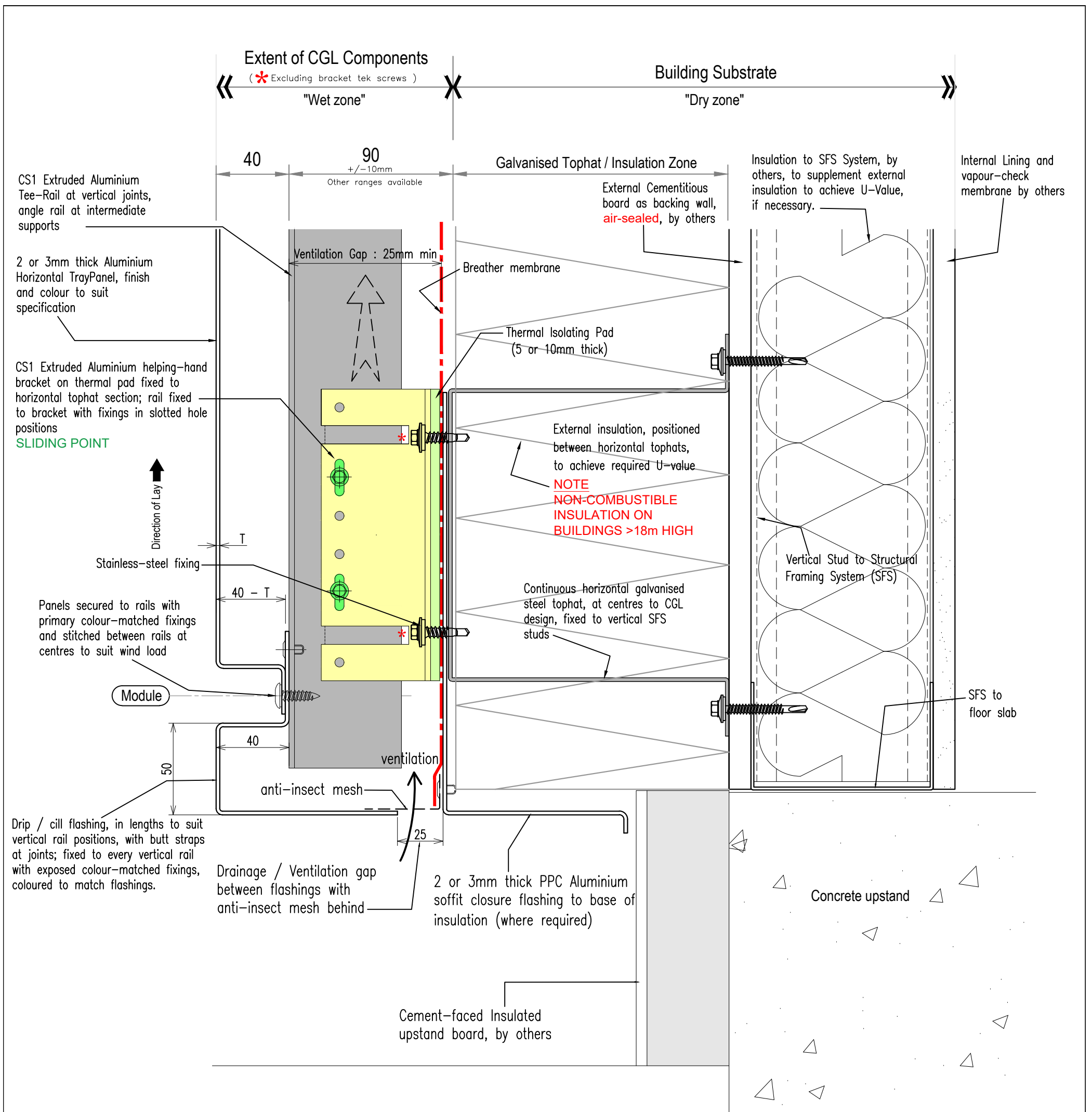
- * For panel module parameters refer to "Systems Overview" document.
- Non CGL components are indicative and subject to contractors project specification

CGL FACADES

System
Rear-Ventilated Facade
Horizontal TrayPanel System

Drawing No	Description	Revision	Scale
TP-H-06	Section at Vertical Expansion Joint	-	1:2 @ A3
Drawn by	Rev	Description	Date
GMcW			
	By	Date	
		January 2019	

2 Young Place, Kelvin Industrial Estate,
East Kilbride, G75 0TD
Tel 01355 235561 email: sales@cglfacades.com



Notes:

For panel module parameters refer to "Systems Overview" document.

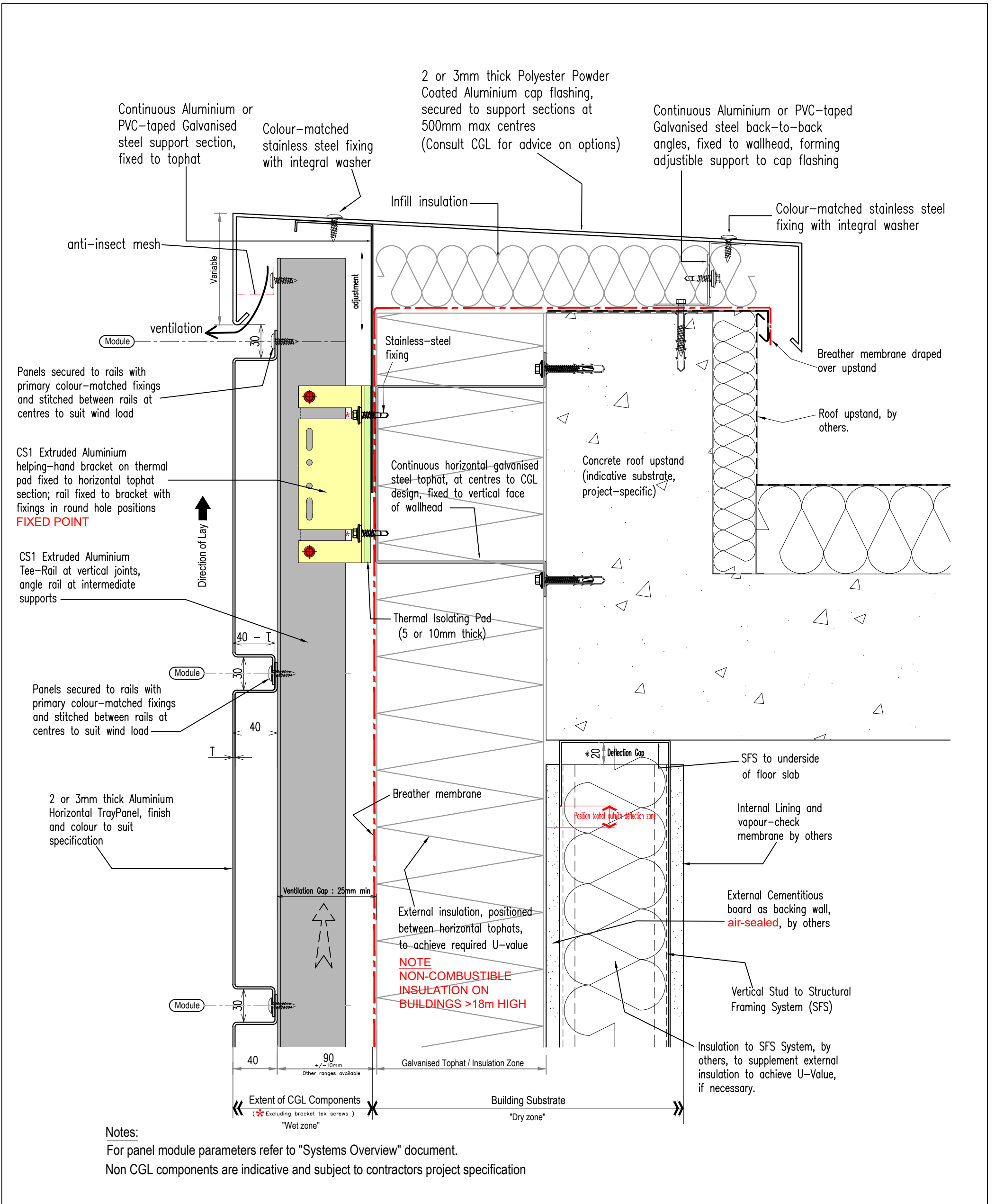
Non CGL components are indicative and subject to contractors project specification

CGL FACADES

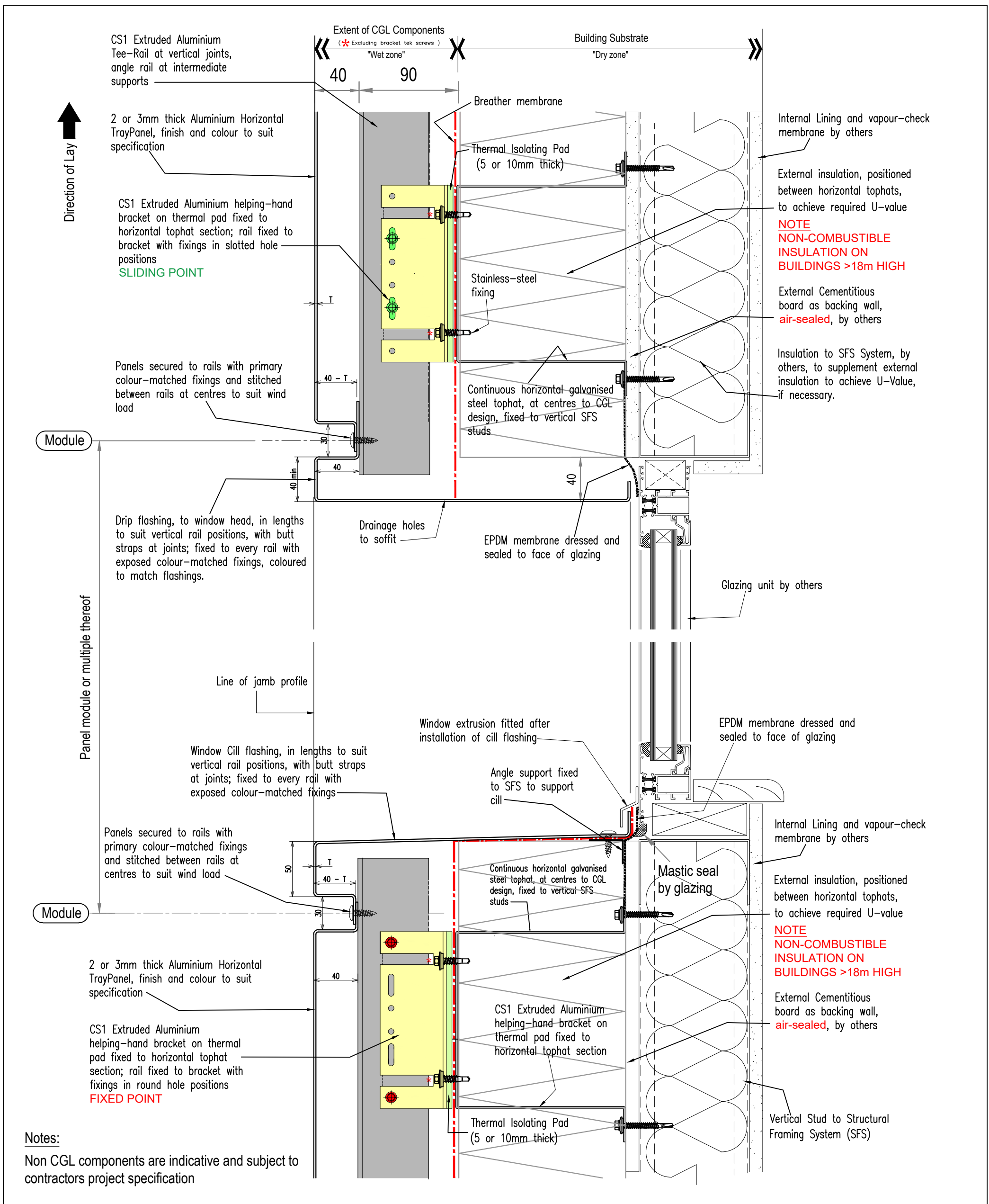
System
**Rear-Ventilated Facade
 Horizontal TrayPanel System**

Drawing No	Description	Revision	Scale
TP-H-07	Section at Base of Cladding	-	1:2 @ A3
Drawn by	Rev	Description	Date
GMcW			
			By
			Date
			January 2019

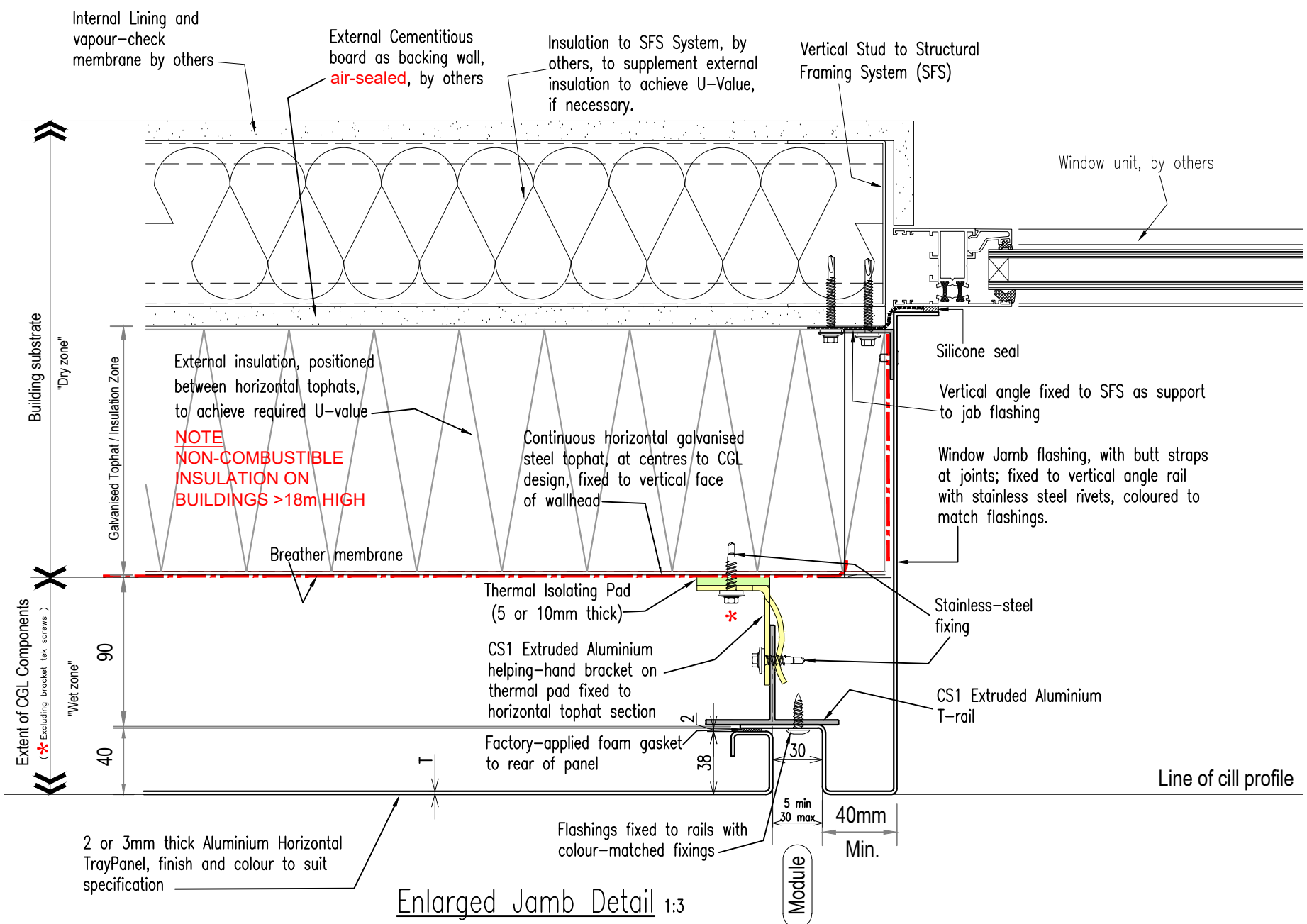
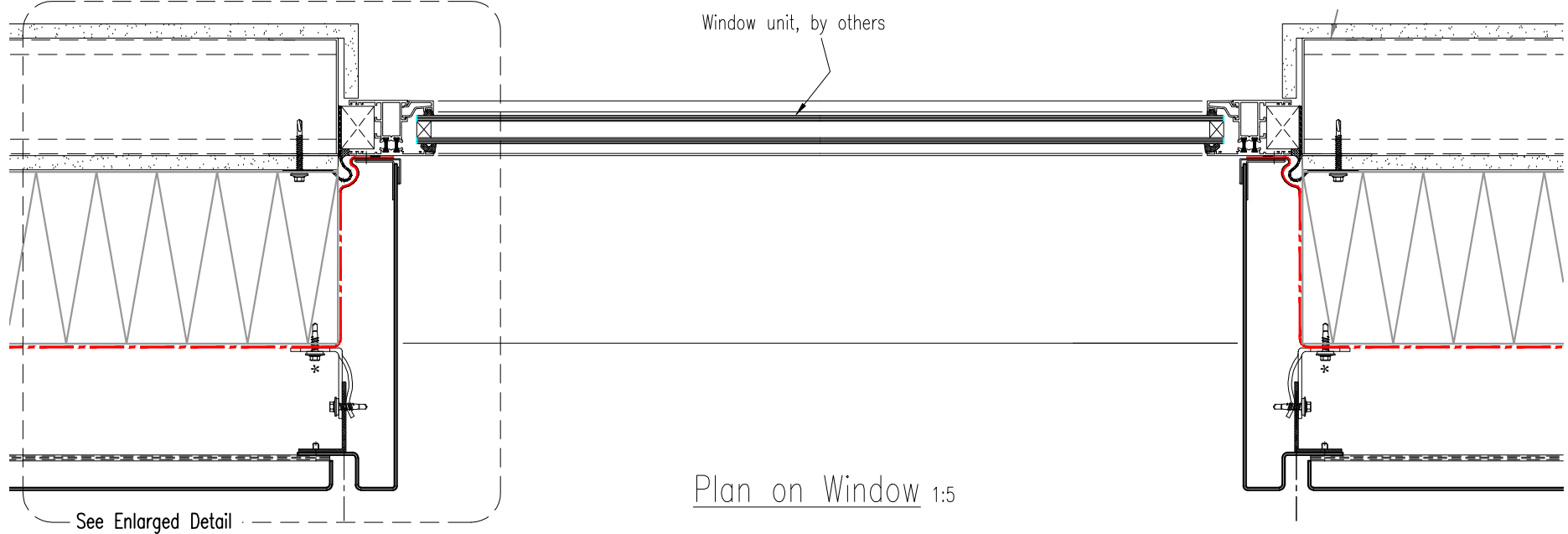
2 Young Place, Kelvin Industrial Estate,
 East Kilbride, G75 0TD
 Tel 01355 235561 email: sales@cglfacades.com



<h1 style="margin: 0;">CGL FACADES</h1> <p style="margin: 0;">2 Young Place, Kelvin Industrial Estate, East Kilbride, G75 0TD Tel 01355 235561 email: sales@cglfacades.com</p>	System		Rear-Ventilated Facade Horizontal TrayPanel System		
	Drawing No	Description	Revision	Scale	
	TP-H-08	Section at Top of Cladding	-	1:2 @ A3	
Drawn by	Rev	Description	Date	By	Date
GMcW					January 2019



<h1>CGL FACADES</h1> <p>2 Young Place, Kelvin Industrial Estate, East Kilbride, G75 0TD Tel 01355 235561 email: sales@cglfacades.com</p>		System	
		<h2>Rear-Ventilated Facade Horizontal TrayPanel System</h2>	
Drawing No	Description	Revision	Scale
TP-H-09	Section thro' Window	-	1:3 @ A3
Drawn by	Rev	Description	Date
GMcW			January 2019



Notes:

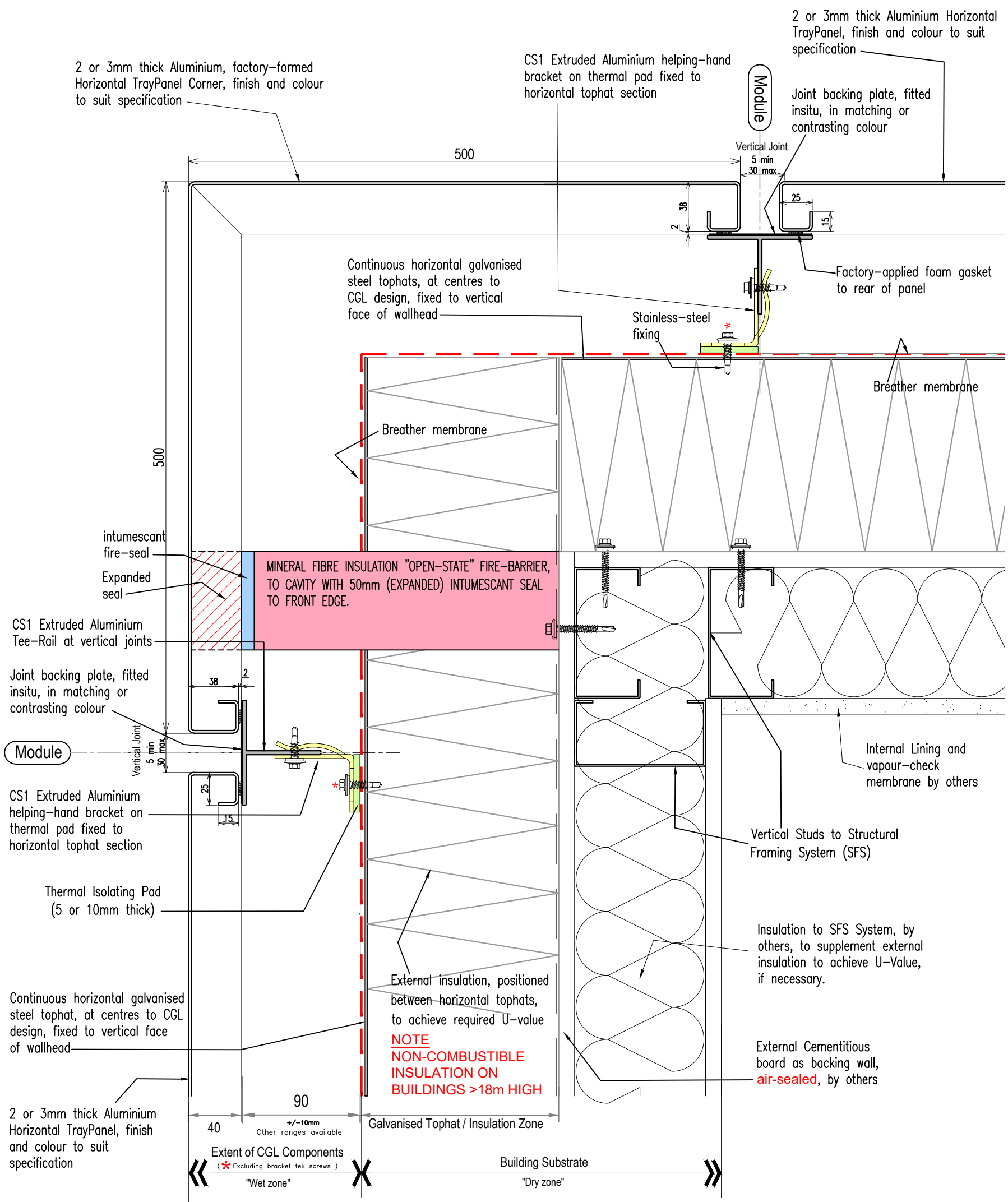
For panel module parameters refer to "Systems Overview" document.
Non CGL components are indicative and subject to contractors project specification

CGL FACADES

2 Young Place, Kelvin Industrial Estate,
East Kilbride, G75 0TD
Tel 01355 235561 email: sales@cglfacades.com

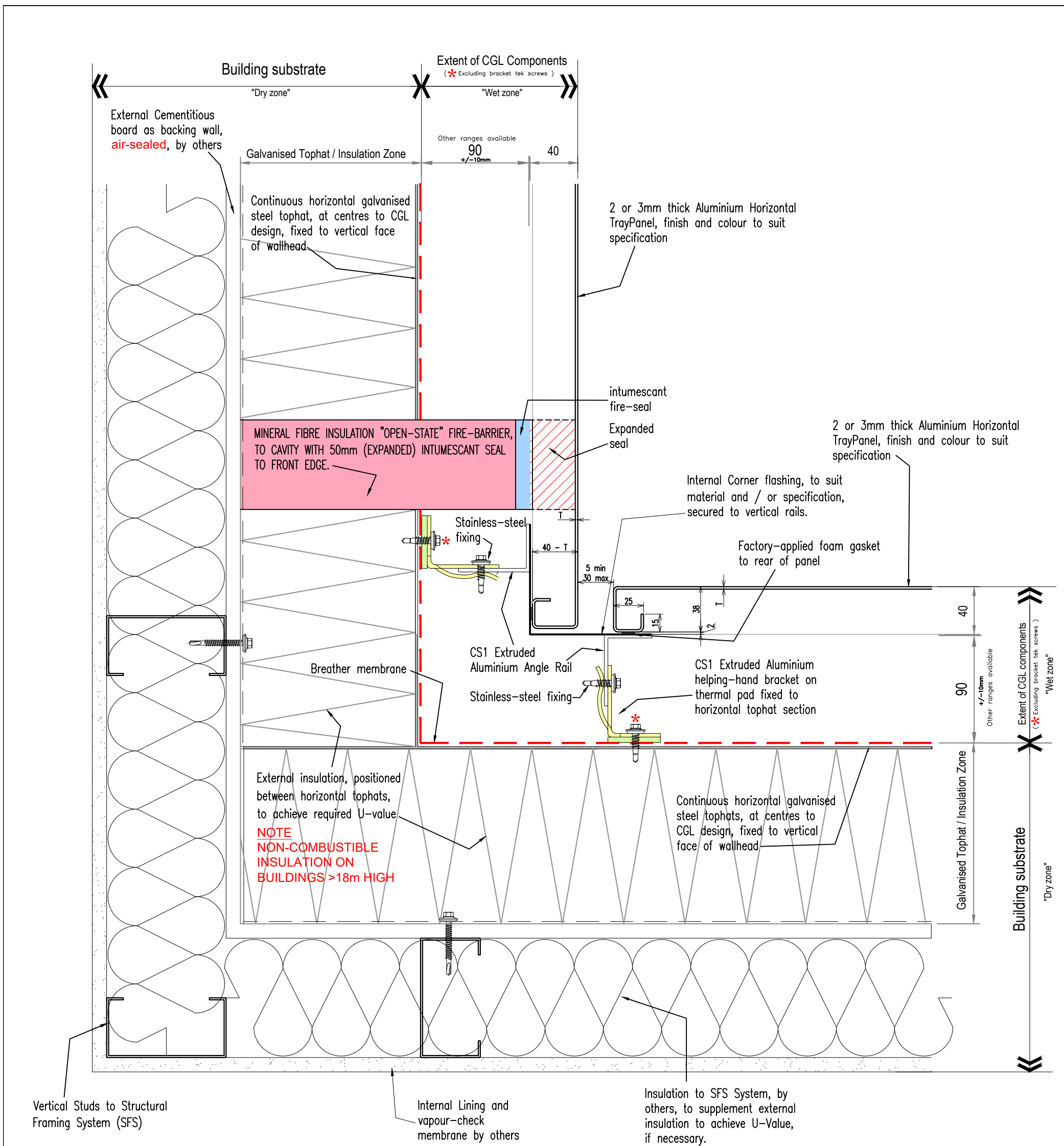
System
Rear-Ventilated Facade
Horizontal TrayPanel System

Drawing No	Description	Revision	Scale
TP-H-10	Window Jamb Detail	-	1:2 @ A3
Drawn by	Rev	Description	Date
GMcW			
			By
			Date
			January 2019



Notes:
 For panel module parameters refer to "Systems Overview" document.
 Non CGL components are indicative and subject to contractors project specification

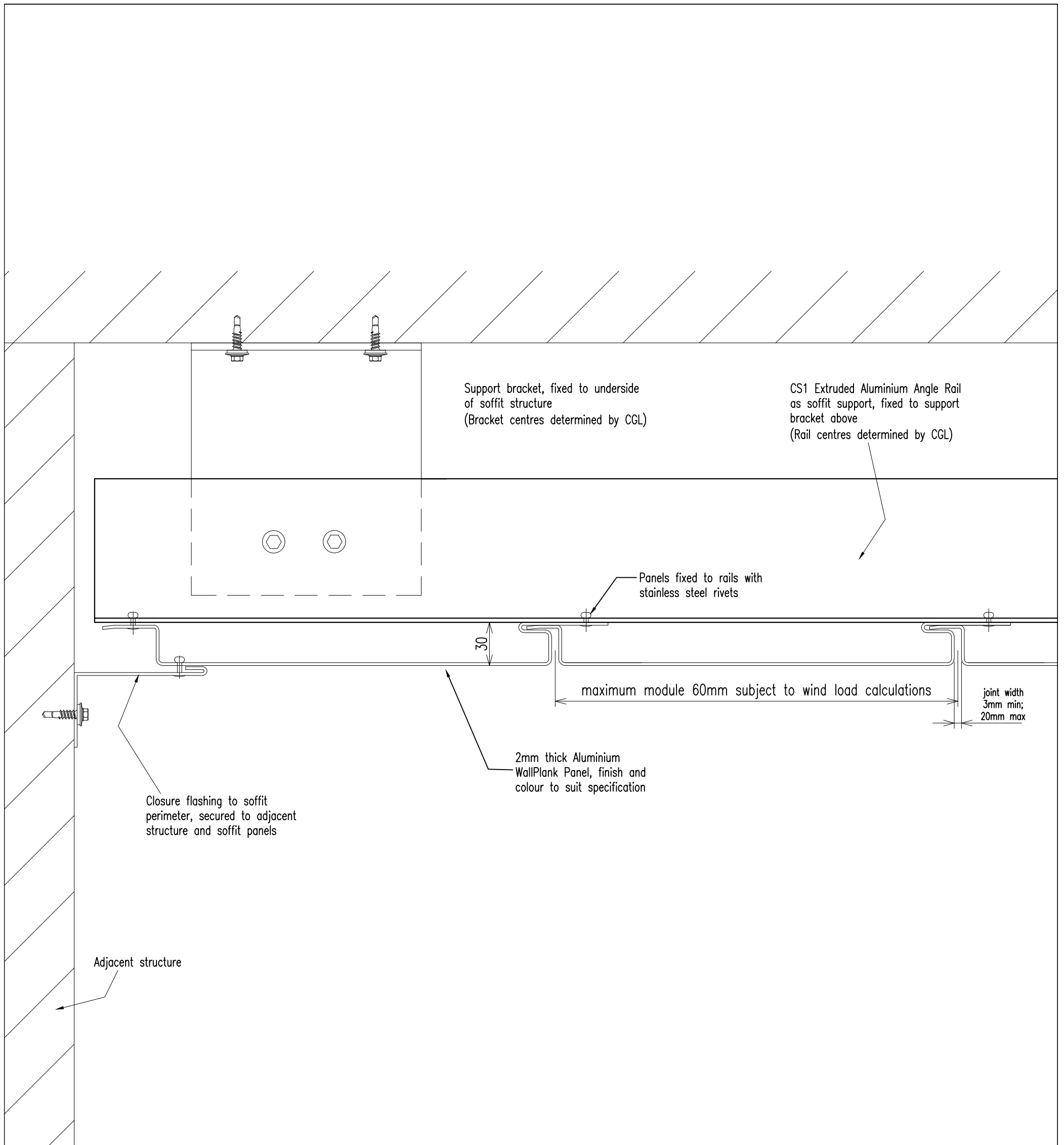
<h1 style="margin: 0;">CGL FACADES</h1>	System		Rear-Ventilated Facade Horizontal TrayPanel System	
	Drawing No	Description	Revision	Scale
	TP-H-11	External Corner Panel Detail	-	1:2 @ A3
2 Young Place, Kelvin Industrial Estate, East Kilbride, G75 0TD Tel 01355 235561 email: sales@cglfacades.com	Drawn by	Rev	Description	Date
	GMcW			By
				Date
				January 2019



Notes:

For panel module parameters refer to "Systems Overview" document.
 Non CGL components are indicative and subject to contractors project specification

<h1 style="margin: 0;">CGL FACADES</h1>	System		Rear-Ventilated Facade Horizontal TrayPanel System	
	Drawing No	Description	Revision	Scale
2 Young Place, Kelvin Industrial Estate, East Kilbride, G75 0TD Tel 01355 235561 email: sales@cglfacades.com	TP-H-12	Internal Corner Detail	-	1:2 @ A3
Drawn by	Rev	Description	Date	By
GMcW				Date
				January 2019



Notes:

For panel module parameters refer to "Systems Overview" document.
 Non CGL components are indicative and subject to contractors project specification

CGL FACADES

System
Rear-Ventilated Facade
Horizontal WallPlank System (2mm thick Aluminium)

Drawing No	Description	Revision	Scale
WP-H-13	Soffit Detail	-	1:3 @ A3
Drawn by	Rev	Description	Date
GMcW			August 2018

2 Young Place, Kelvin Industrial Estate,
 East Kilbride, G75 0TD
 Tel 01355 235561 email: sales@cglfacades.com