

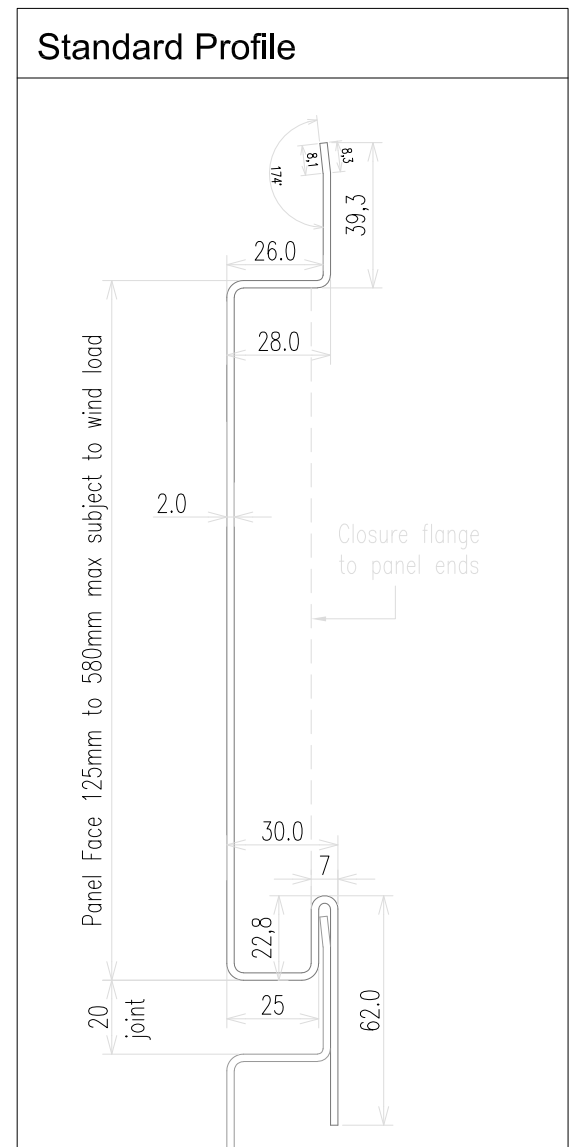
CGL Facades

Rear-Ventilated Horizontal WallPlank System

2mm thick Aluminium

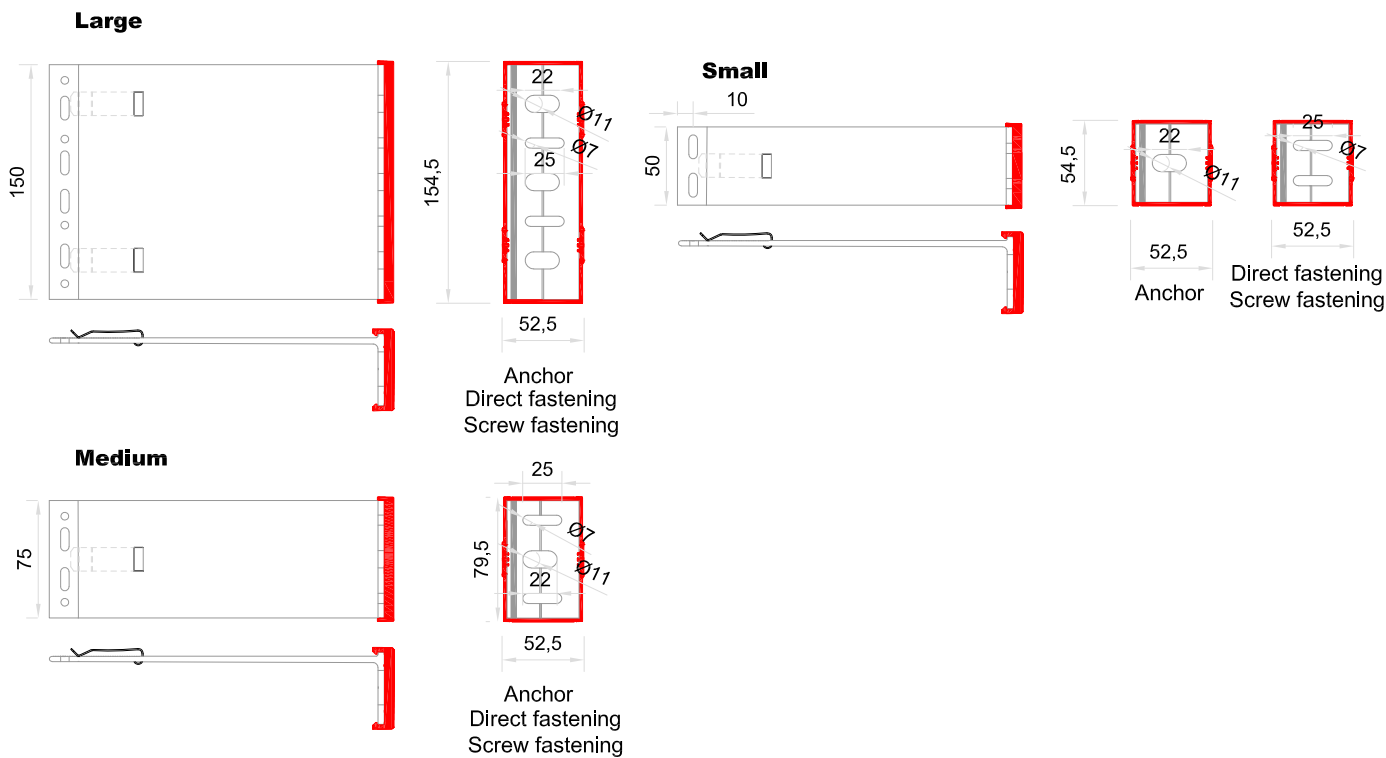
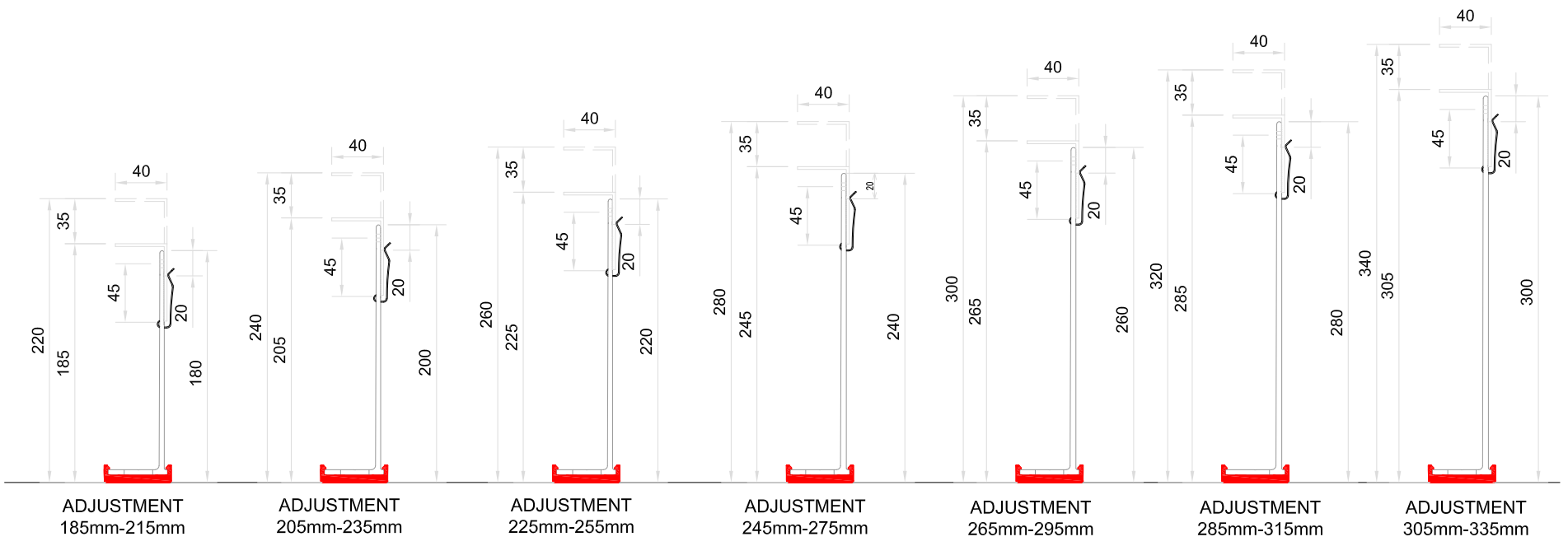
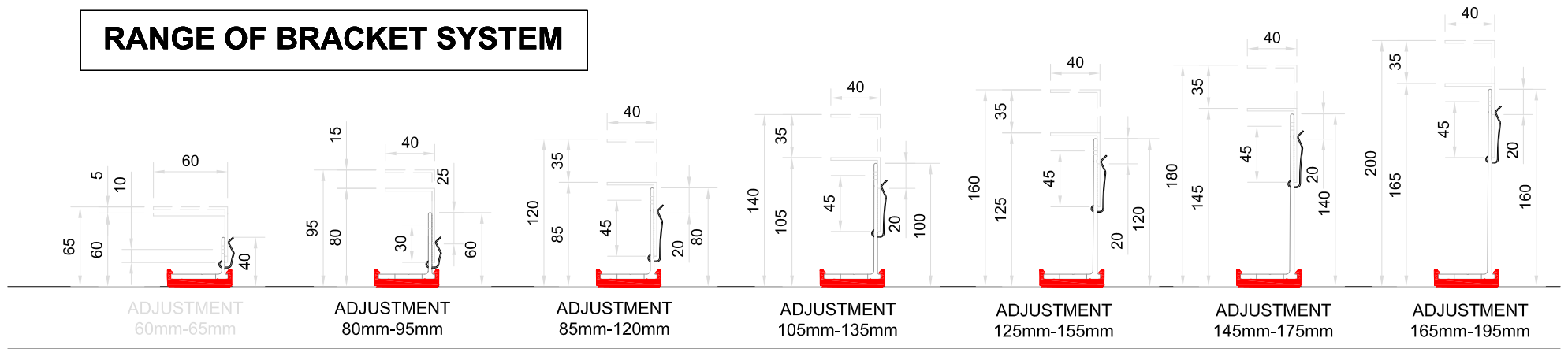
Contents

- WP-H-00 - System Contents & Photographs
- WP-H-01 - Range of Bracket System
- WP-H-02 - Cladding Detail Locations
- WP-H-03 - Section at Vertical Joint
- WP-H-04 - Section at Horizontal Joint
- WP-H-05 - Deflection Detail at Floor Slab (including fire stop)
- WP-H-06 - Section thro' Vertical Expansion Joint
- WP-H-07 - Section at Base of Cladding
- WP-H-08 - Section at Head of Cladding
- WP-H-09 - Vertical Section thro' Window
- WP-H-10 - Window Jamb Detail
- WP-H-11 - External Corner
- WP-H-12 - Internal Corner



| | | | | | |
|---|----------------------|-----------------------|------------|----------|--------------|
| System | | | | | |
| Rear-Ventilated Facade Horizontal WallPlank System (2mm thick Aluminium) | | | | | |
| Drawing No | Description | | | Revision | Scale |
| WP-H-00 | System Contents Page | | | B | - |
| Drawn by | Rev | Description | Date | By | Date |
| GMcW | A | REVISED BRACKET RANGE | 17/12/2021 | MC | January 2019 |
| | B | DRAWING UPDATED | 01/02/2022 | LB | |

RANGE OF BRACKET SYSTEM



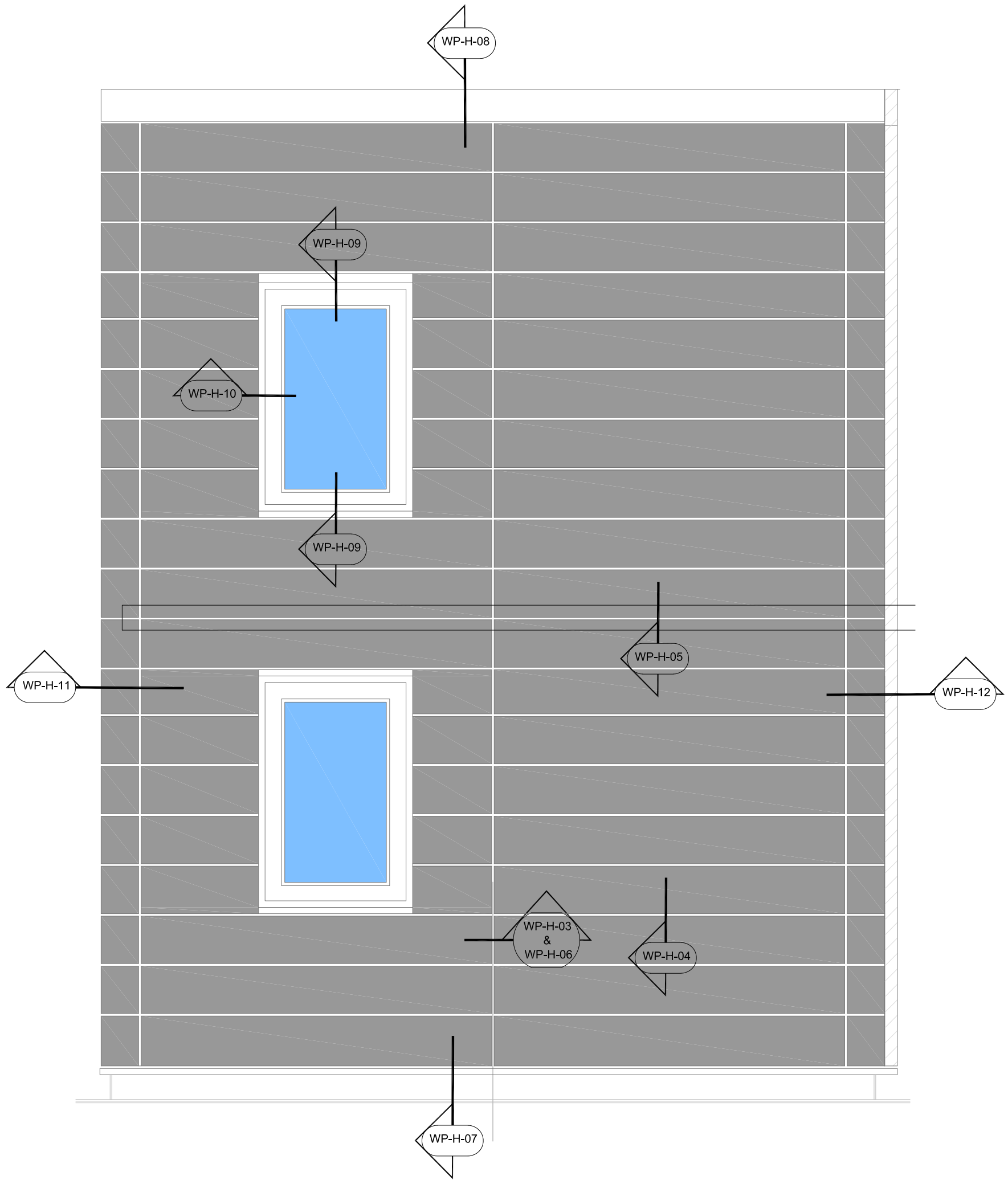
| BRACKETS | Adjustment range for each bracket (mm) | |
|----------|--|--------|
| WP - 40 | from 60 | to 65 |
| WP - 60 | from 80 | to 90 |
| WP - 80 | from 85 | to 115 |
| WP - 100 | from 105 | to 135 |
| WP - 120 | from 125 | to 155 |
| WP - 140 | from 145 | to 175 |
| WP - 160 | from 165 | to 195 |
| WP - 180 | from 285 | to 215 |
| WP - 200 | from 205 | to 235 |
| WP - 220 | from 225 | to 255 |
| WP - 240 | from 245 | to 275 |
| WP - 260 | from 265 | to 295 |
| WP - 280 | from 285 | to 315 |
| WP - 300 | from 305 | to 335 |

NOTE: -
DIMENSION RANGES DOES INCLUDE FOR THERMAL PADS



System
Rear-Ventilated Facade
Horizontal WallPlank System (2mm thick Aluminium)

| | | | |
|------------|-------------------------|----------------------|------------|
| Drawing No | Description | Revision | Scale |
| WP-H-01 | Range of Bracket System | B | - |
| Drawn by | Rev | Description | Date |
| GMcW | A | Upper limits altered | 06/08/2018 |
| | By | Date | |
| | GMcW | January 2019 | |



Elevation on Cladding



System

**Rear-Ventilated Facade
Horizontal WallPlank System (2mm thick Aluminium)**

Drawing No

WP-H-02

Description

Cladding Detail Locations

Revision

B

Scale

-

Drawn by

GMcW

Rev

A
B

Description

REVISD BRACKET RANGE
DRAWING UPDATED

Date

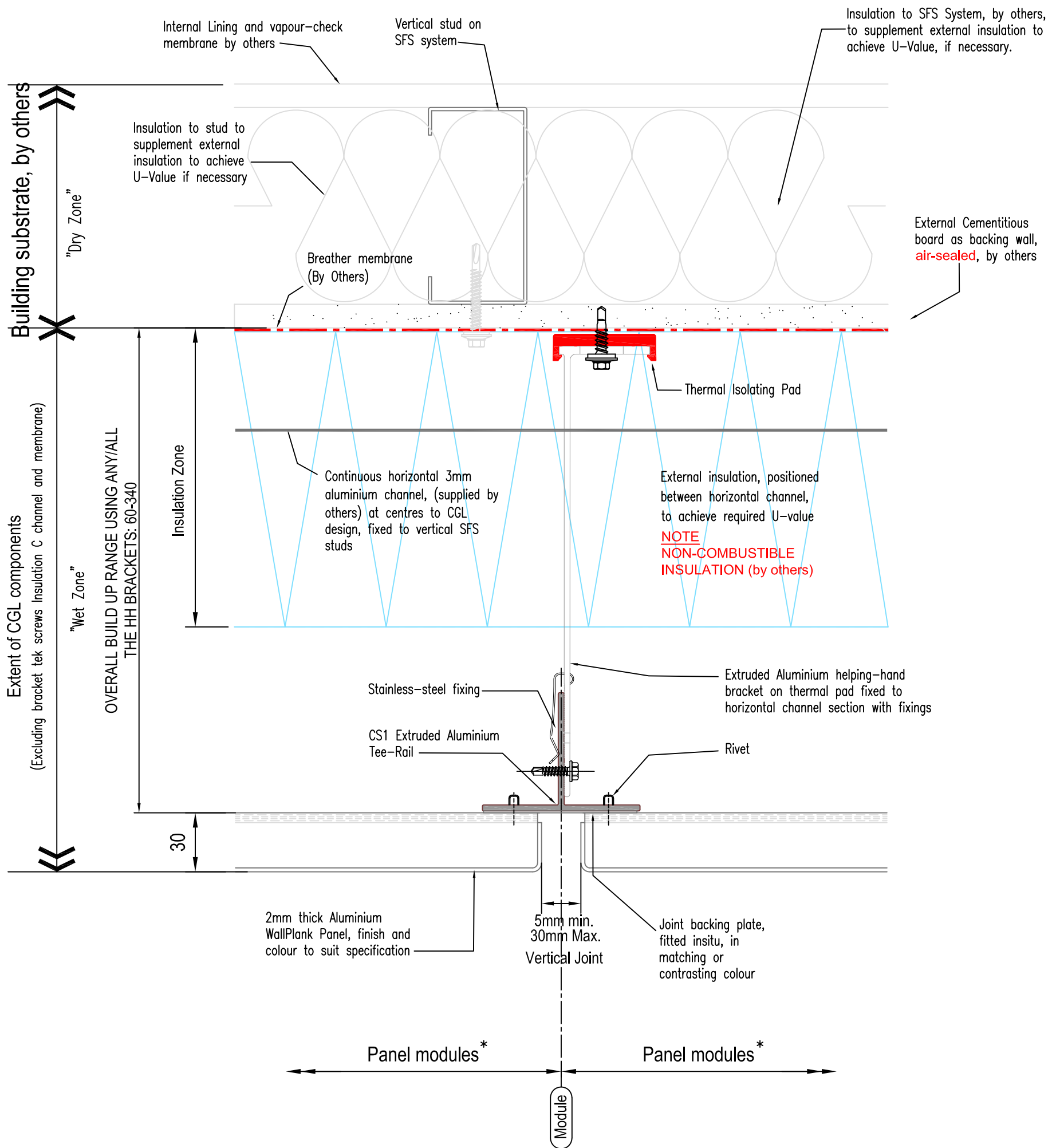
17/12/2021
01/02/2022

By

MC
LB

Date

January 2019

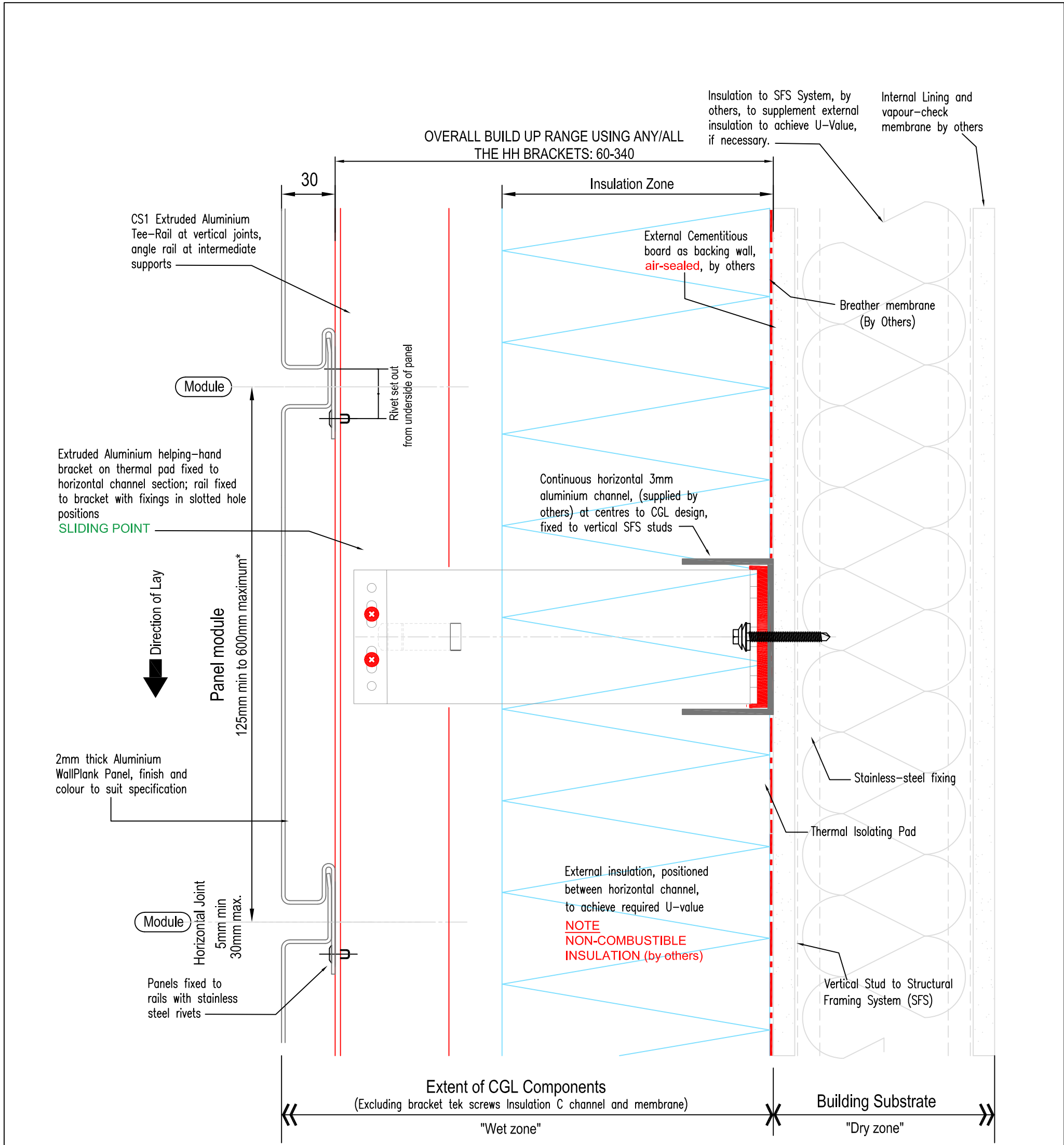


Notes:

- * For panel module parameters refer to "Systems Overview" document.
- Non CGL components are indicative and subject to contractors project specification



| | | | | | | |
|---|-----------------|---|------------|----|----------------------|-------------------|
| System Rear-Ventilated Facade Horizontal WallPlank System (2mm thick Aluminium) | | | | | | |
| Drawing No WP-H-03 | | Description Section at Vertical Joint | | | Revision B | Scale 1:2 @ A3 |
| Drawn by GMcW | Rev | Description | Date | By | Date | |
| | A | REVISED BRACKET RANGE | 17/12/2021 | MC | January 2019 | |
| B | DRAWING UPDATED | 01/02/2022 | LB | | | |



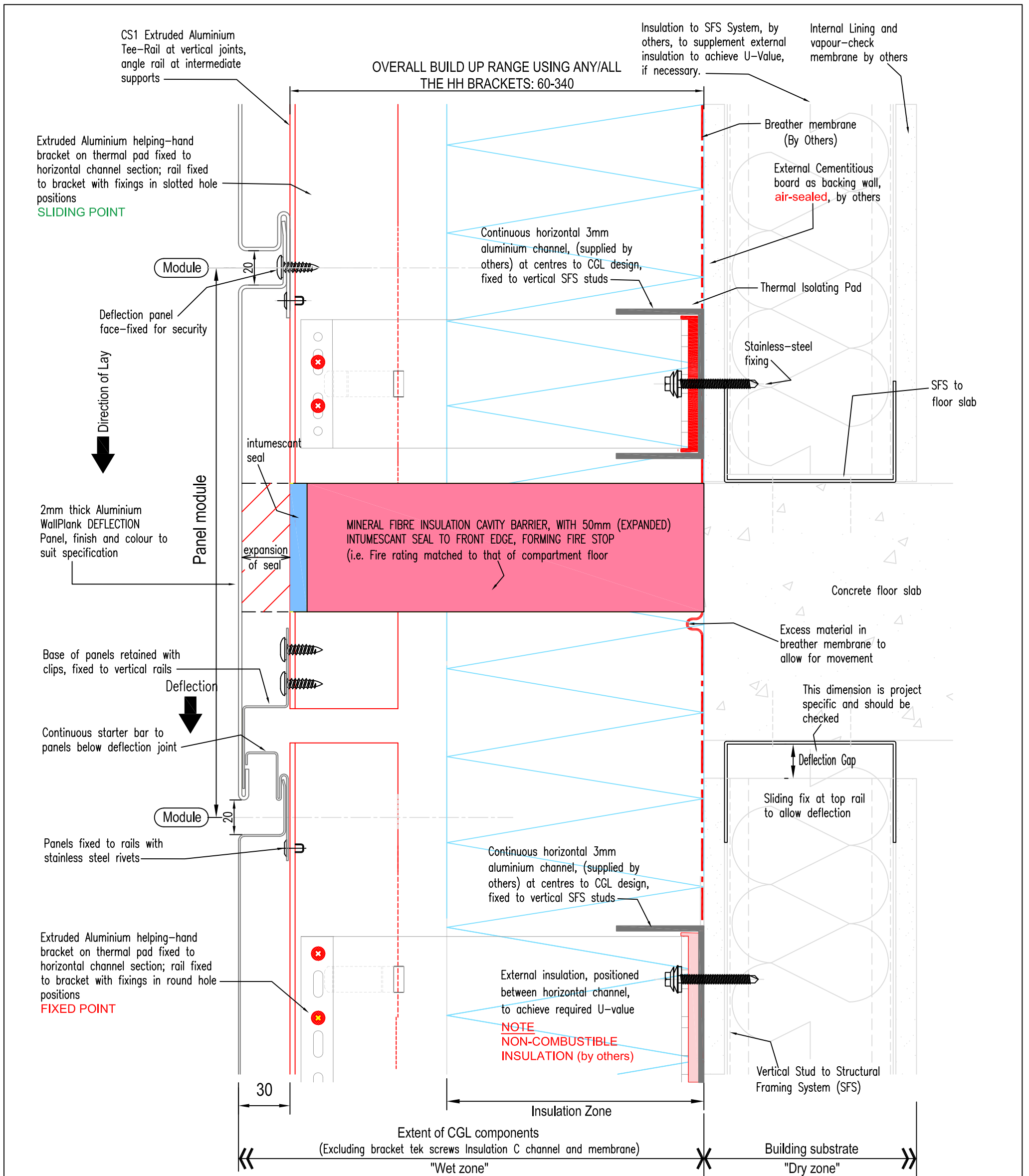
Notes:

* 600mm maximum module dependent on wind loads
 Non CGL components are indicative and subject to contractors project specification

CS1 grid system is multifunctional and movement is reviewed on a project-specific basis



| | | | | | |
|---|--|-----------------------------|-----------------------|--------------|----------|
| System | | | | | |
| Rear-Ventilated Facade Horizontal WallPlank System (2mm thick Aluminium) | | | | | |
| Drawing No | | Description | | Revision | Scale |
| WP-H-04 | | Section at Horizontal Joint | | B | 1:2 @ A3 |
| Drawn by | | Rev | Description | Date | By |
| GMcW | | A | REVISED BRACKET RANGE | 17/12/2021 | MC |
| | | B | DRAWING UPDATED | 01/02/2022 | LB |
| | | | | Date | |
| | | | | January 2019 | |



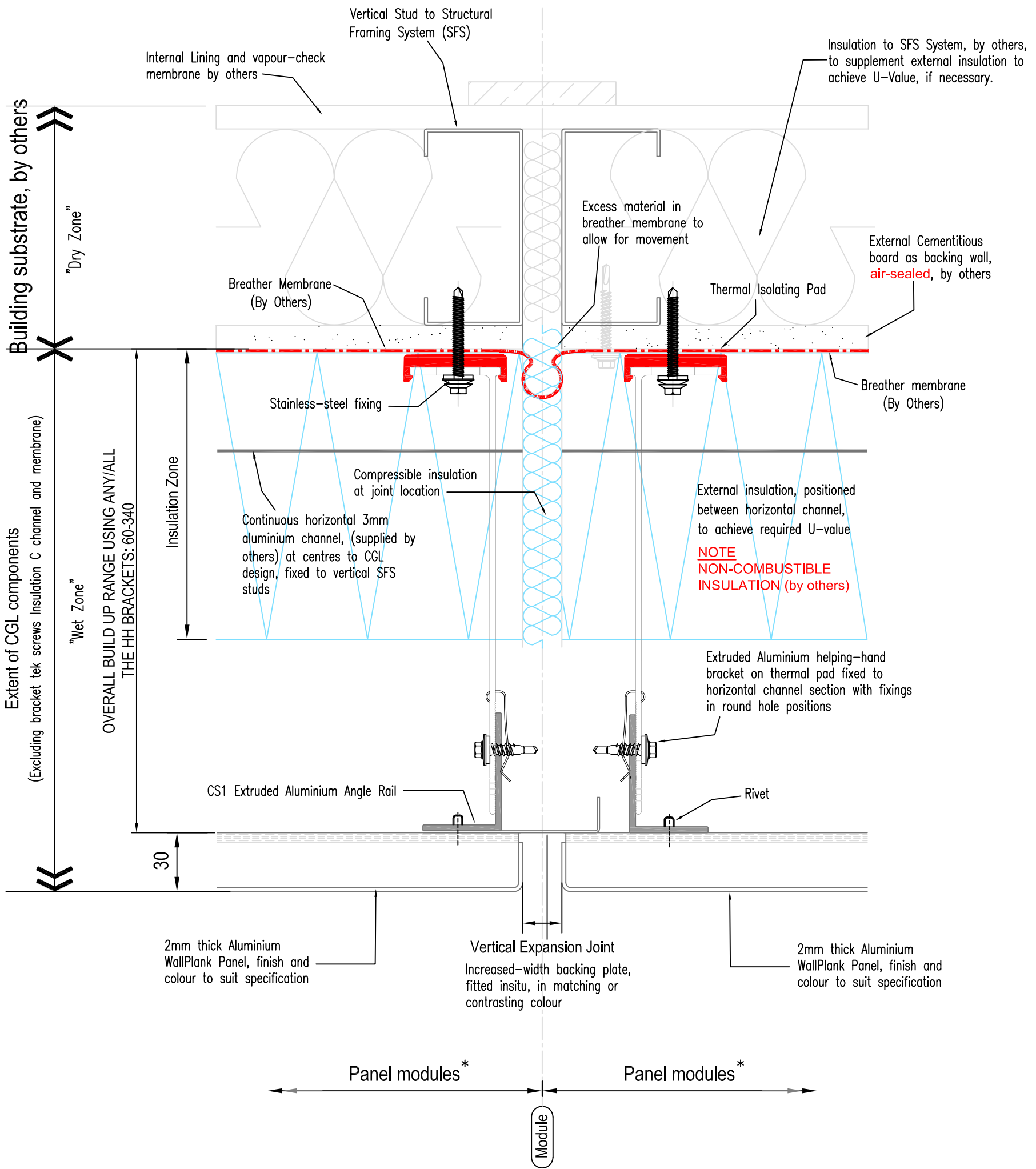
Notes:

- * = Movement joints must be co-ordinated.
- For panel module parameters refer to "Systems Overview" document.
- Non CGL components are indicative and subject to contractors project specification

CS1 grid system is multifunctional and movement is reviewed on a project-specific basis



| | | | | | |
|---|--|-----------------------|------------|----------|--------------|
| System | | | | | |
| Rear-Ventilated Facade Horizontal WallPlank System (2mm thick Aluminium) | | | | | |
| Drawing No | Description | | | Revision | Scale |
| WP-H-05 | Deflection Detail at Floor Slab (incorporating fire stop arrangement) | | | B | 1:2 @ A3 |
| Drawn by | Rev | Description | Date | By | Date |
| GMcW | A | REVISED BRACKET RANGE | 17/12/2021 | MC | January 2019 |
| | B | DRAWING UPDATED | 01/02/2022 | LB | |

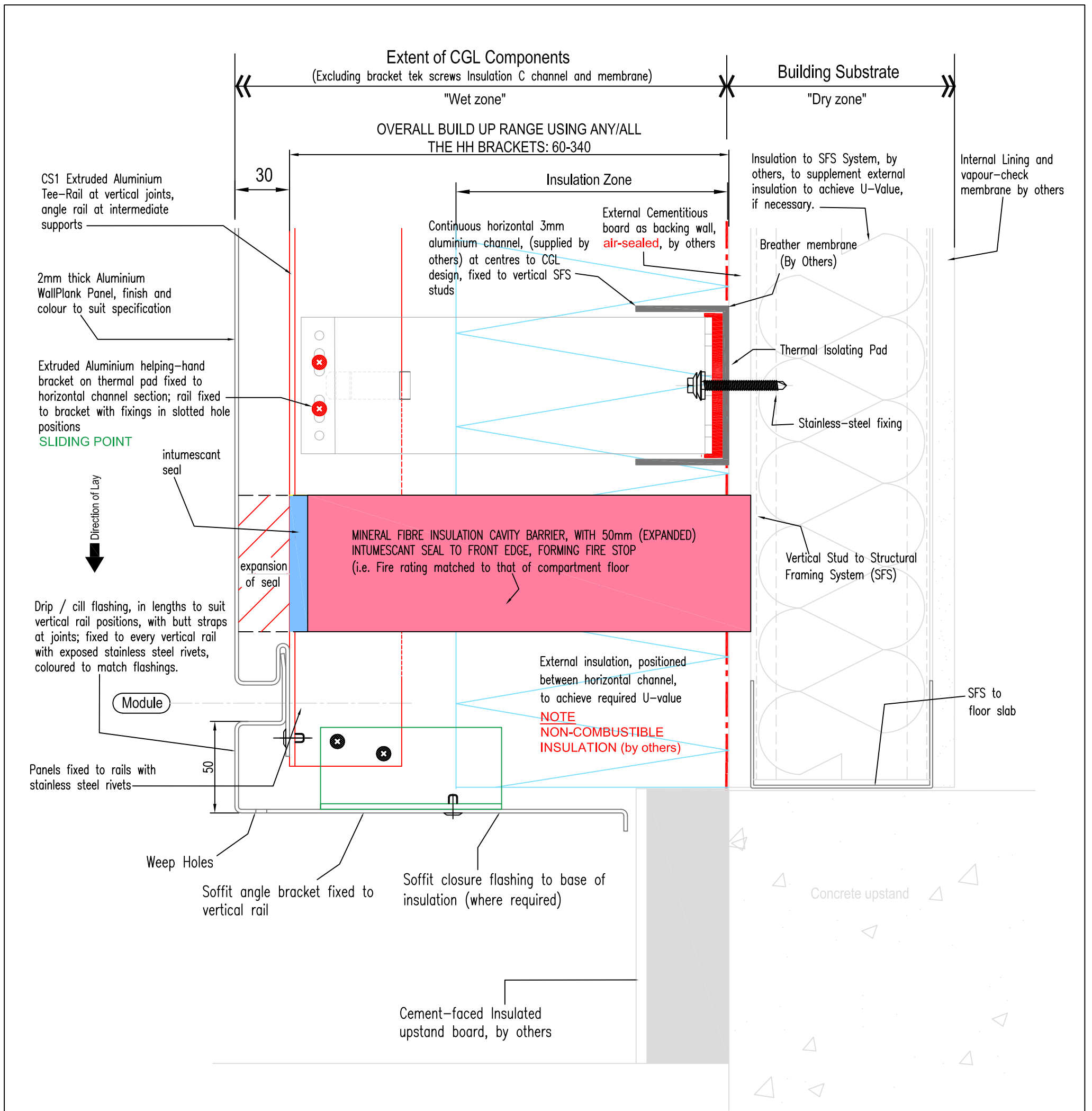


Notes:

- * For panel module parameters refer to "Systems Overview" document.
- Non CGL components are indicative and subject to contractors project specification



| | | | | | |
|---|--|-------------------------------------|-----------------------|--------------|----------|
| System | | | | | |
| Rear-Ventilated Facade Horizontal WallPlank System (2mm thick Aluminium) | | | | | |
| Drawing No | | Description | | Revision | Scale |
| WP-H-06 | | Section at Vertical Expansion Joint | | B | 1:2 @ A3 |
| Drawn by | | Rev | Description | Date | By |
| GMcW | | A | REVISED BRACKET RANGE | 17/12/2021 | MC |
| | | B | DRAWING UPDATED | 01/02/2022 | LB |
| | | | | Date | |
| | | | | January 2019 | |



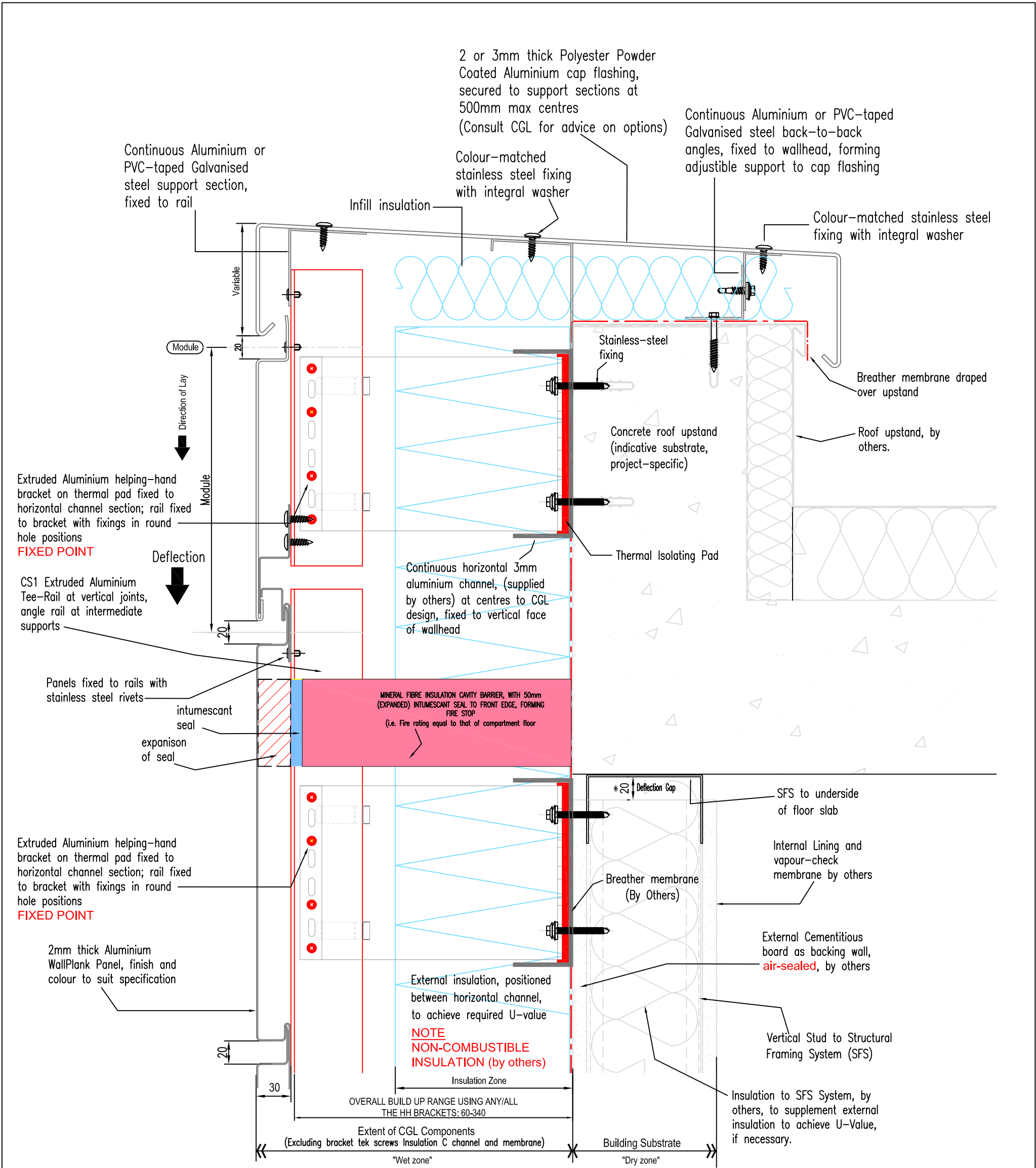
Notes:

For panel module parameters refer to "Systems Overview" document.

Non CGL components are indicative and subject to contractors project specification



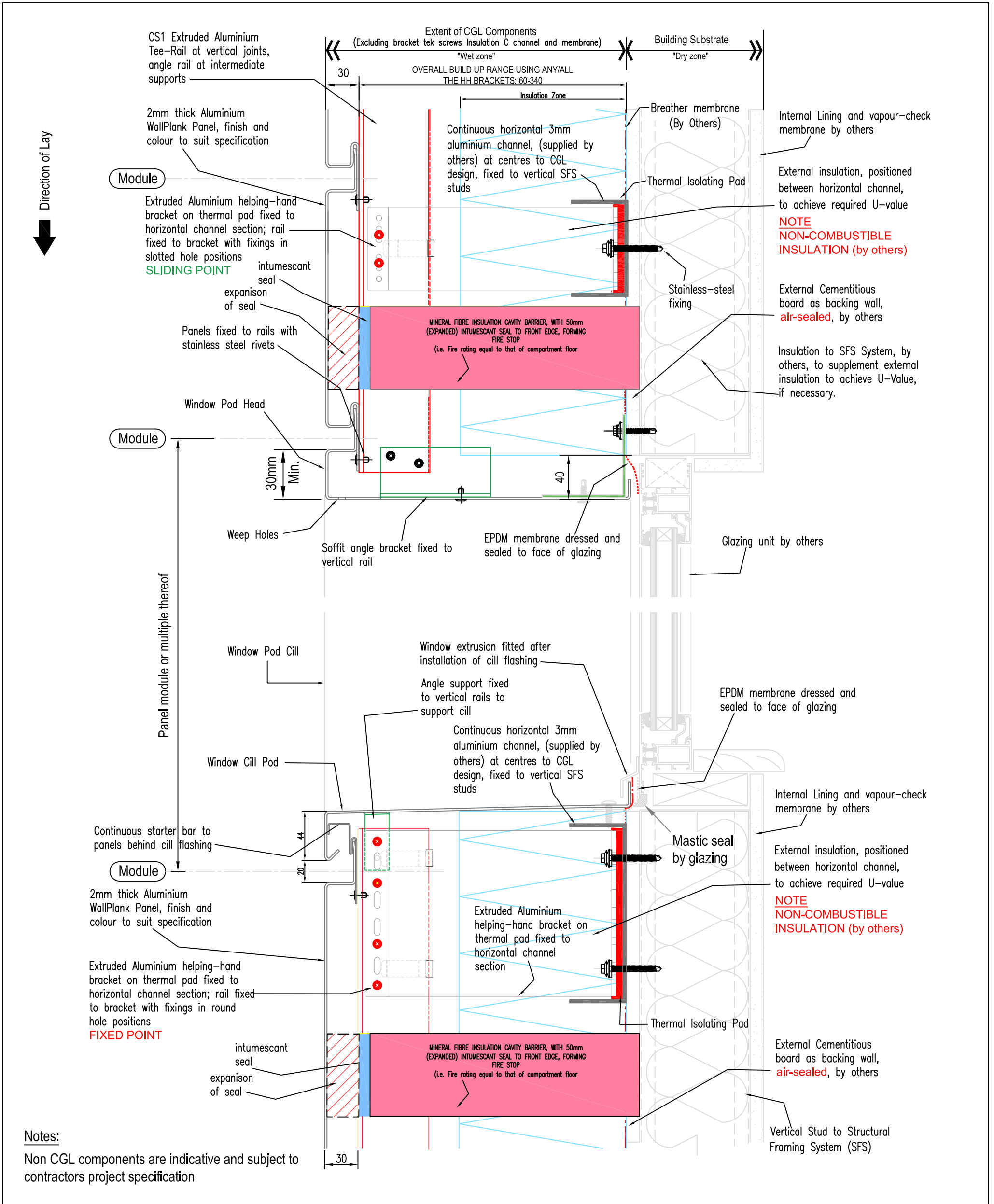
| | | | | | |
|---|--|-----------------------------|-----------------------|--------------|----------|
| System | | | | | |
| Rear-Ventilated Facade Horizontal WallPlank System (2mm thick Aluminium) | | | | | |
| Drawing No | | Description | | Revision | Scale |
| WP-H-07 | | Section at Base of Cladding | | B | 1:2 @ A3 |
| Drawn by | | Rev | Description | Date | By |
| GMcW | | A | REVISED BRACKET RANGE | 17/12/2021 | MC |
| | | B | DRAWING UPDATED | 01/02/2022 | LB |
| | | | | Date | |
| | | | | January 2019 | |



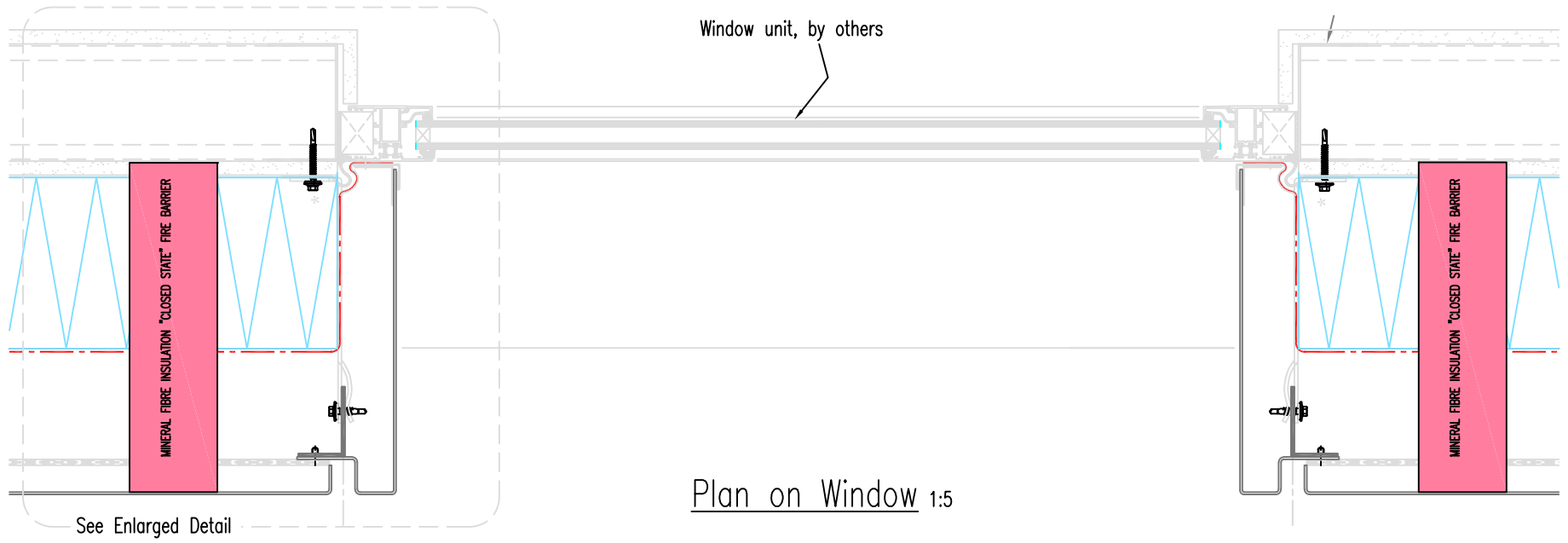
Notes:
 For panel module parameters refer to "Systems Overview" document.
 Non CGL components are indicative and subject to contractors project specification



| | | | | | |
|---|--|----------------------------|-----------------------|------------|--------------|
| System | | | | | |
| Rear-Ventilated Facade Horizontal WallPlank System (2mm thick Aluminium) | | | | | |
| Drawing No | | Description | | Revision | Scale |
| WP-H-08 | | Section at Top of Cladding | | B | 1:3 @ A3 |
| Drawn by | | Rev | Description | Date | By |
| GMcW | | A | REVISED BRACKET RANGE | 17/12/2021 | MC |
| | | B | DRAWING UPDATED | 01/02/2022 | LB |
| | | | | Date | January 2019 |

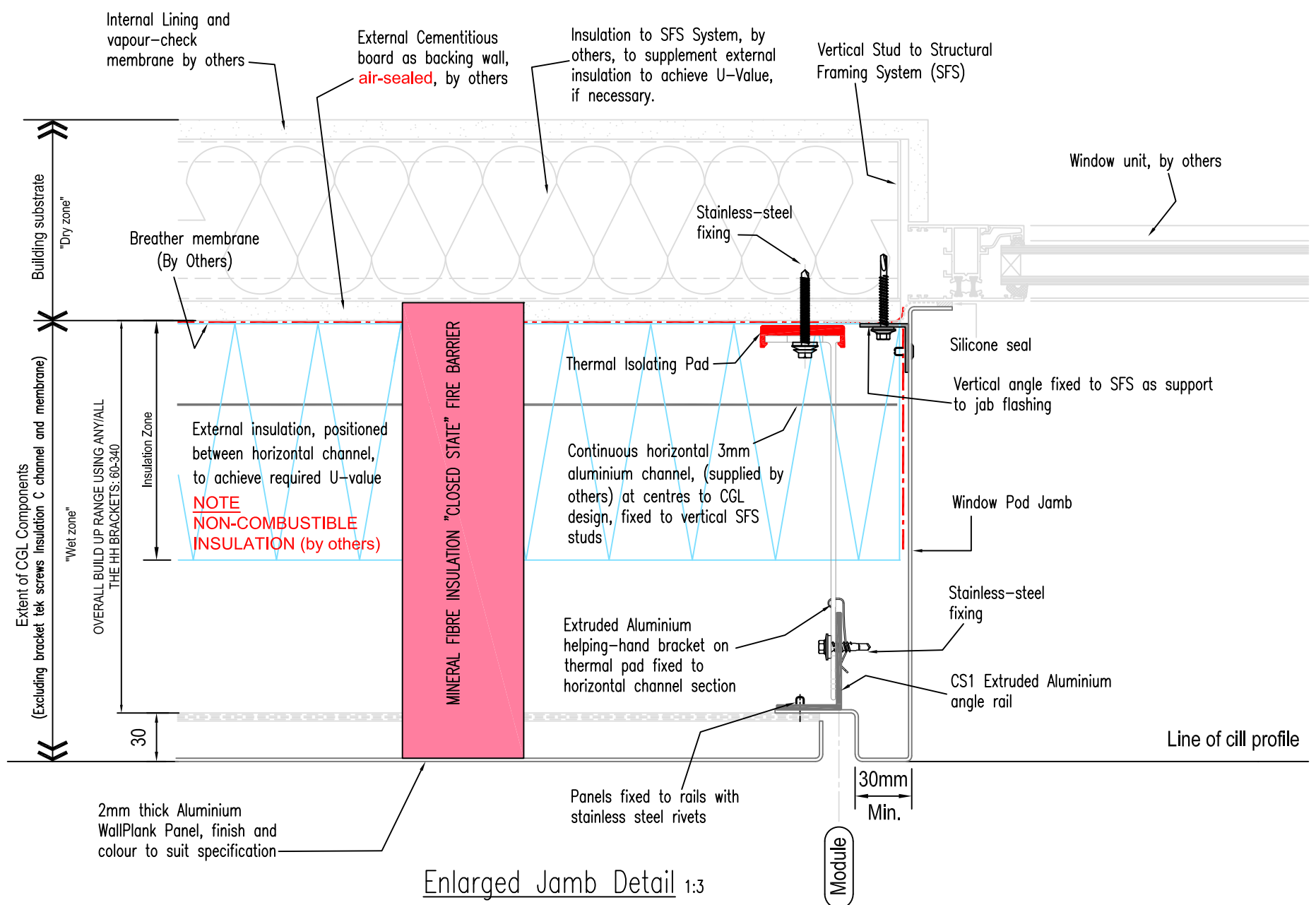


| | | | | | |
|---|--|----------------------|-----------------------|------------|--------------|
| System | | | | | |
| Rear-Ventilated Facade Horizontal WallPlank System (2mm thick Aluminium) | | | | | |
| Drawing No | | Description | | Revision | Scale |
| WP-H-09 | | Section thro' Window | | B | 1:3 @ A3 |
| Drawn by | | Rev | Description | Date | By |
| GMcW | | A | REVISED BRACKET RANGE | 17/12/2021 | MC |
| | | B | DRAWING UPDATED | 01/02/2022 | LB |
| | | | | Date | January 2019 |



Plan on Window 1:5

See Enlarged Detail



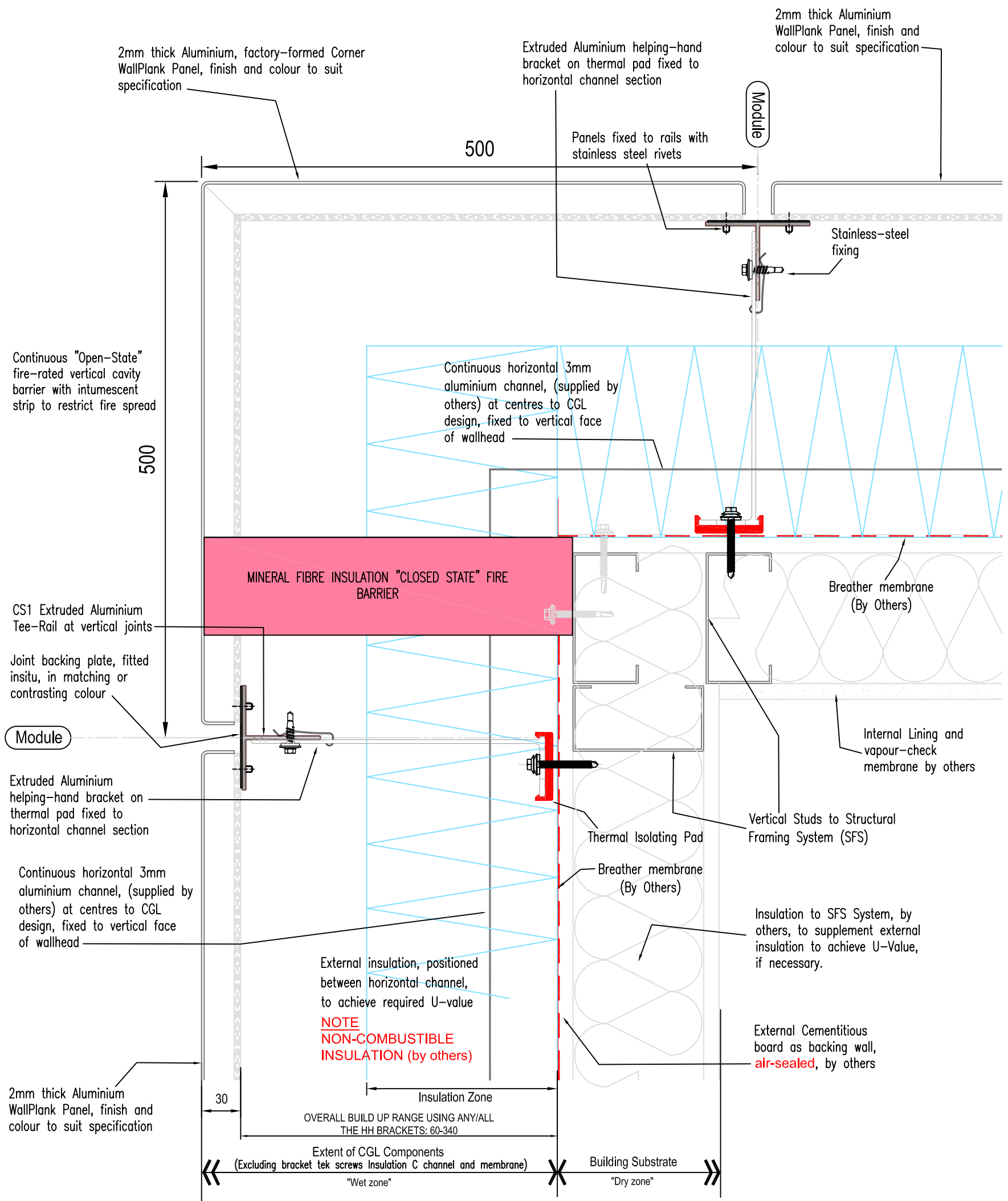
Enlarged Jamb Detail 1:3

Notes:

For panel module parameters refer to "Systems Overview" document.
 Non CGL components are indicative and subject to contractors project specification



| | | | | | |
|---|--------------------|-----------------------|------------|----------|---------------|
| System | | | | | |
| Rear-Ventilated Facade | | | | | |
| Horizontal WallPlank System (2mm thick Aluminium) | | | | | |
| Drawing No | Description | | | Revision | Scale |
| WP-H-10 | Window Jamb Detail | | | B | As shown @ A3 |
| Drawn by | Rev | Description | Date | By | Date |
| GMcW | A | REVISED BRACKET RANGE | 17/12/2021 | MC | January 2019 |
| | B | DRAWING UPDATED | 01/02/2022 | LB | |

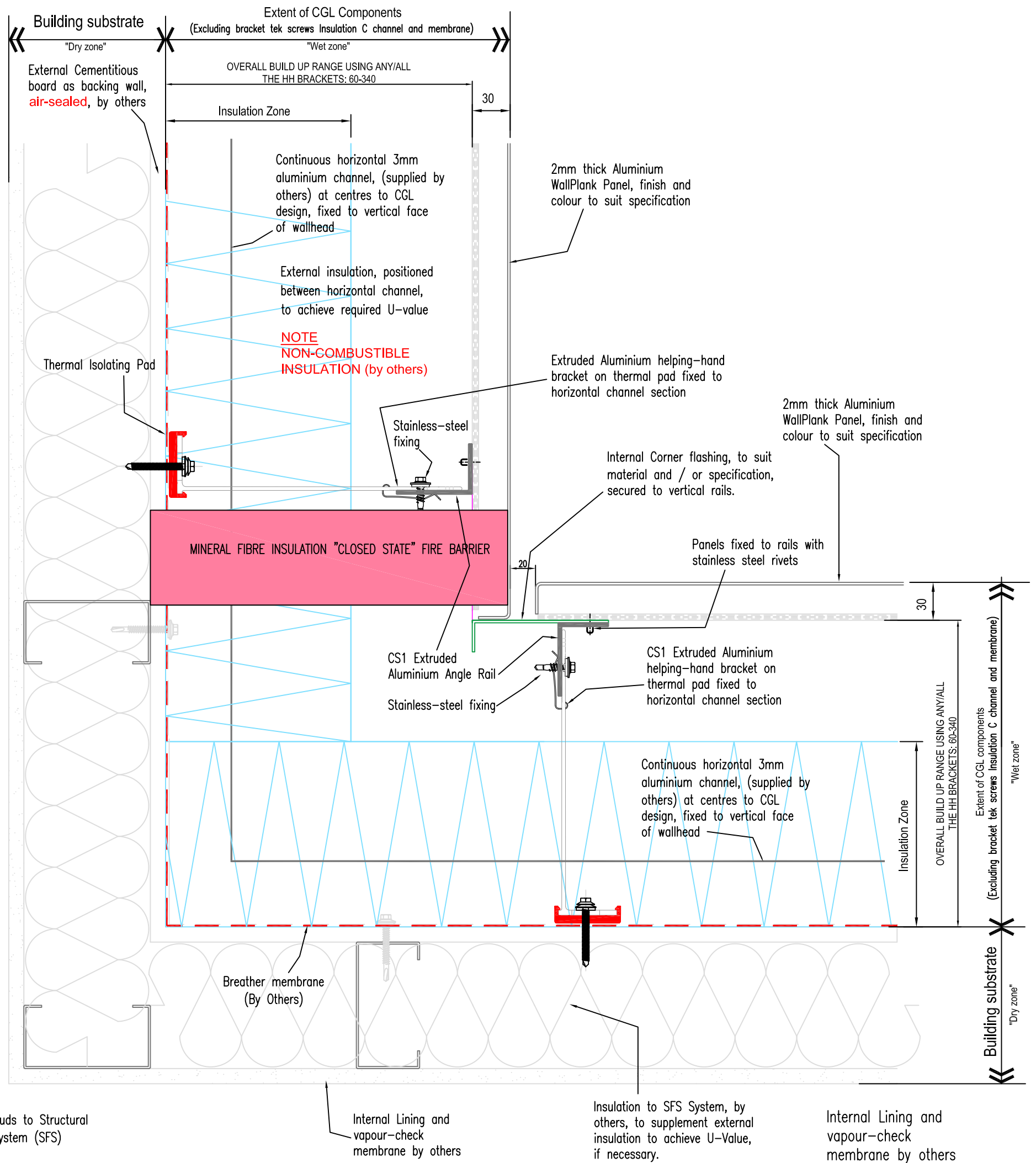


Notes:

For panel module parameters refer to "Systems Overview" document.
 Non CGL components are indicative and subject to contractors project specification



| | | | | | |
|---|------------------------------|-----------------------|------------|----------|--------------|
| System | | | | | |
| Rear-Ventilated Facade | | | | | |
| Horizontal WallPlank System (2mm thick Aluminium) | | | | | |
| Drawing No | Description | | | Revision | Scale |
| WP-H-11 | External Corner Panel Detail | | | B | 1:3 @ A3 |
| Drawn by | Rev | Description | Date | By | Date |
| GMcW | A | REVISED BRACKET RANGE | 17/12/2021 | MC LB | January 2019 |
| | B | DRAWING UPDATED | 01/02/2022 | | |



Notes:

For panel module parameters refer to "Systems Overview" document.
 Non CGL components are indicative and subject to contractors project specification



| | | | | | |
|---|--|------------------------|-----------------------|------------|--------------|
| System | | | | | |
| Rear-Ventilated Facade Horizontal WallPlank System (2mm thick Aluminium) | | | | | |
| Drawing No | | Description | | Revision | Scale |
| WP-H-12 | | Internal Corner Detail | | B | 1:3 @ A3 |
| Drawn by | | Rev | Description | Date | By |
| GMcW | | A | REVISED BRACKET RANGE | 17/12/2021 | MC |
| | | B | DRAWING UPDATED | 01/02/2022 | LB |
| | | | | Date | January 2019 |