

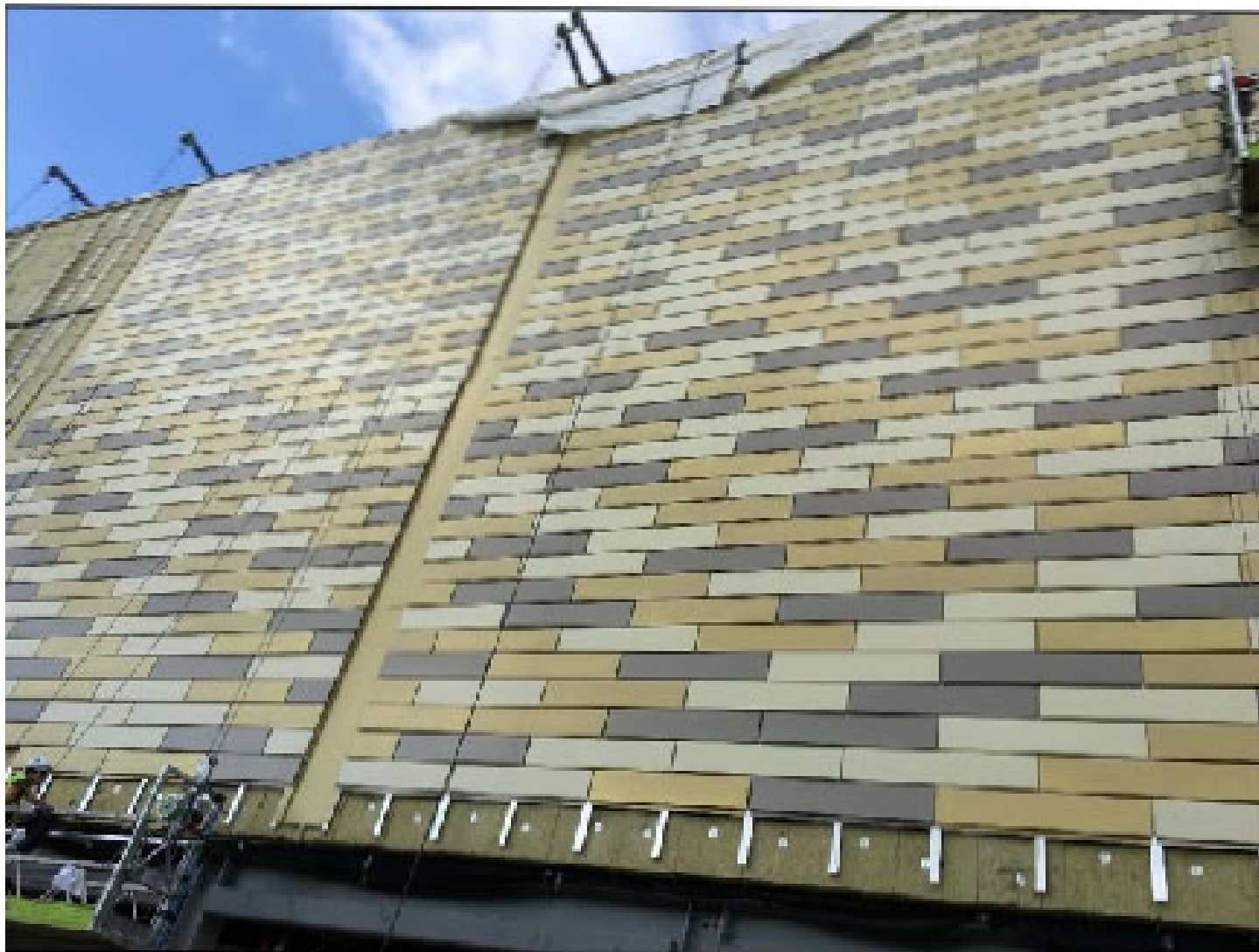
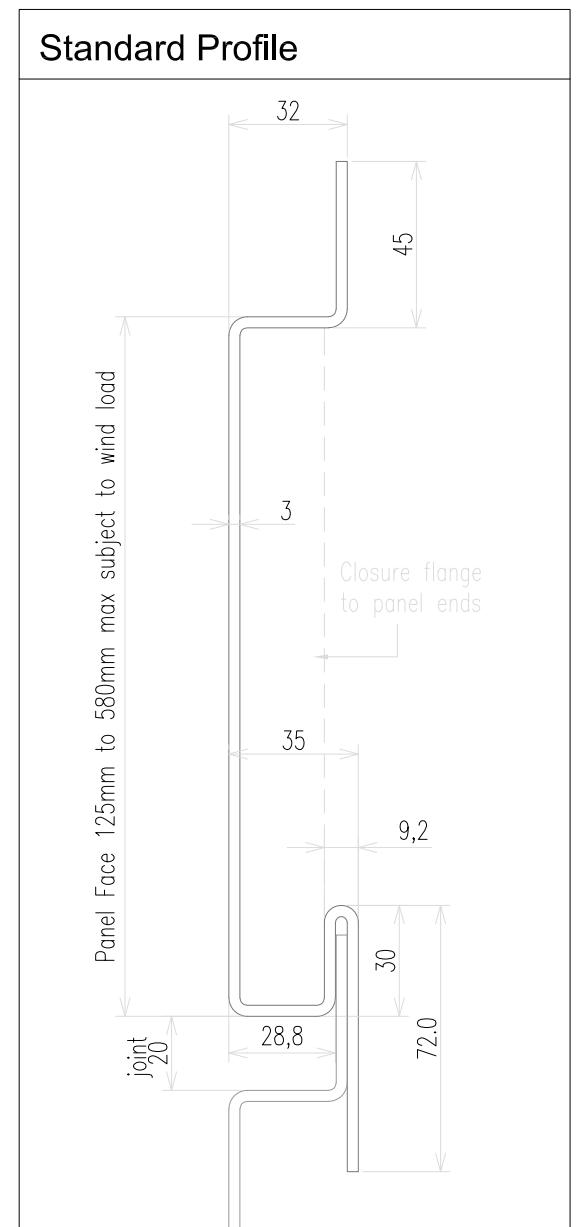
CGL Facades

Rear-Ventilated Horizontal WallPlank System

3mm thick Aluminium

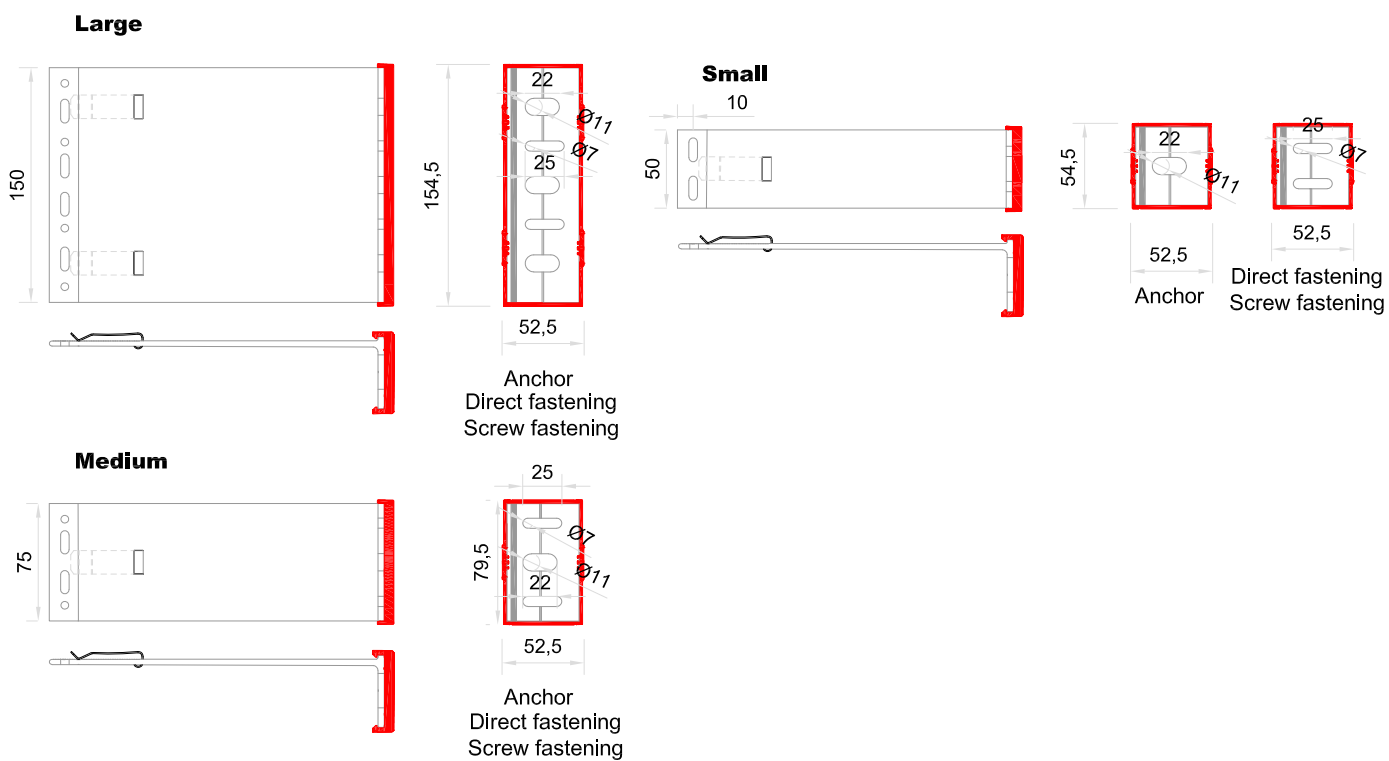
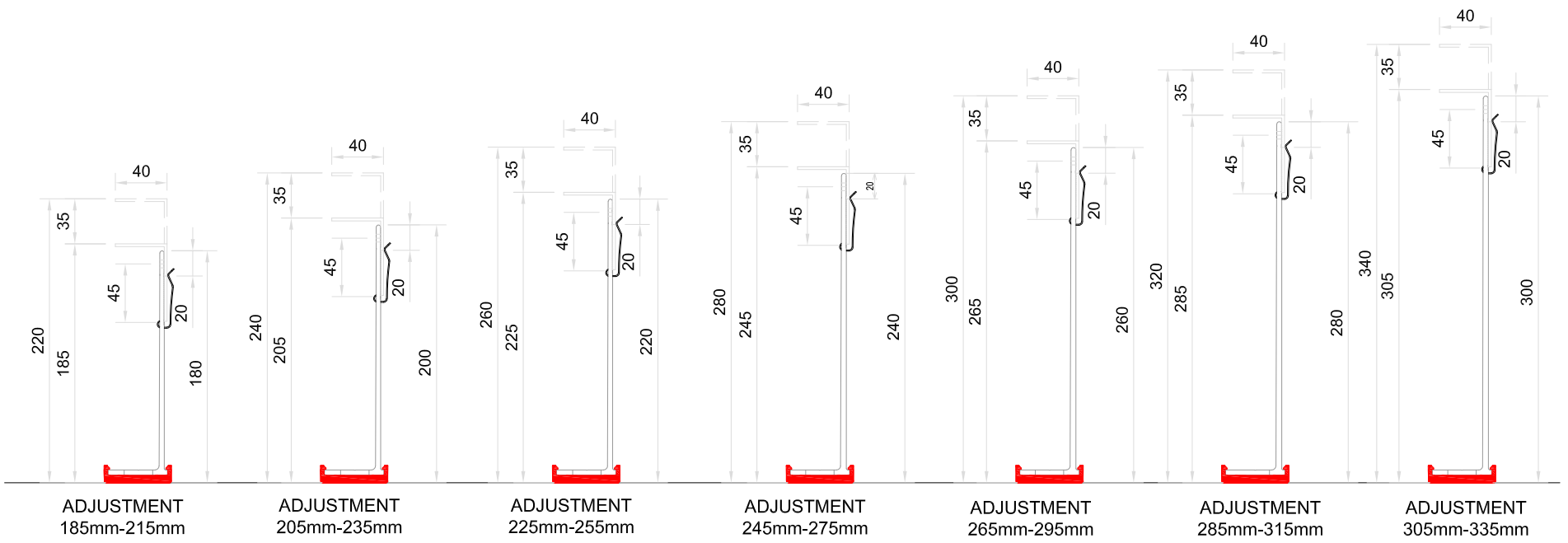
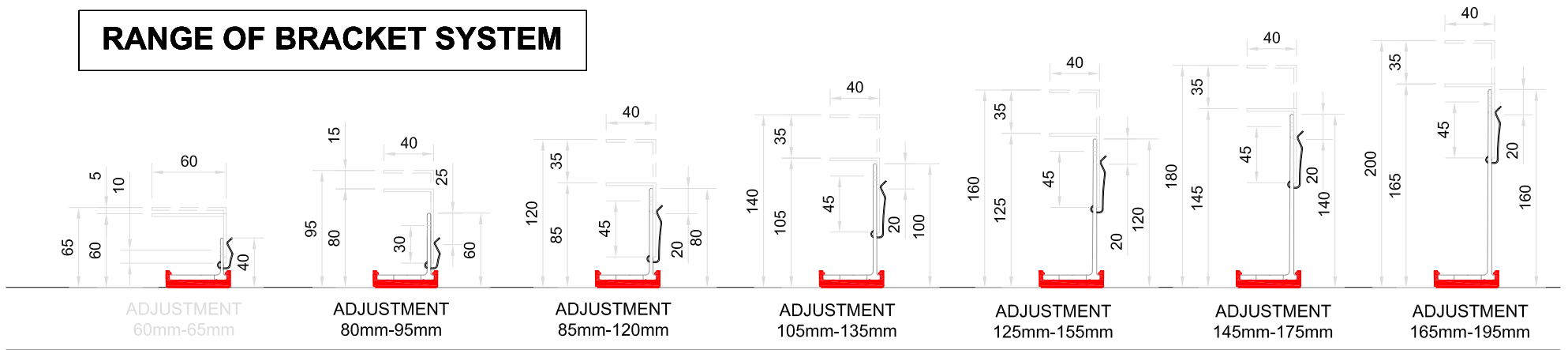
Contents

- WP-H-00 - System Contents & Photographs
- WP-H-01 - Range of Bracket System
- WP-H-02 - Cladding Detail Locations
- WP-H-03 - Section at Vertical Joint
- WP-H-04 - Section at Horizontal Joint
- WP-H-05 - Deflection Detail at Floor Slab (including fire stop)
- WP-H-06 - Section thro' Vertical Expansion Joint
- WP-H-07 - Section at Base of Cladding
- WP-H-08 - Section at Head of Cladding
- WP-H-09 - Vertical Section thro' Window
- WP-H-10 - Window Jamb Detail
- WP-H-11 - External Corner
- WP-H-12 - Internal Corner



System					
Rear-Ventilated Facade Horizontal WallPlank System (3mm thick Aluminium)					
Drawing No	Description			Revision	Scale
WP-H-00	System Contents Page			A	-
Drawn by	Rev	Description	Date	By	Date
GMcW	A	DRAWING UPDATED	02/02/2022	LB	March 2020

RANGE OF BRACKET SYSTEM



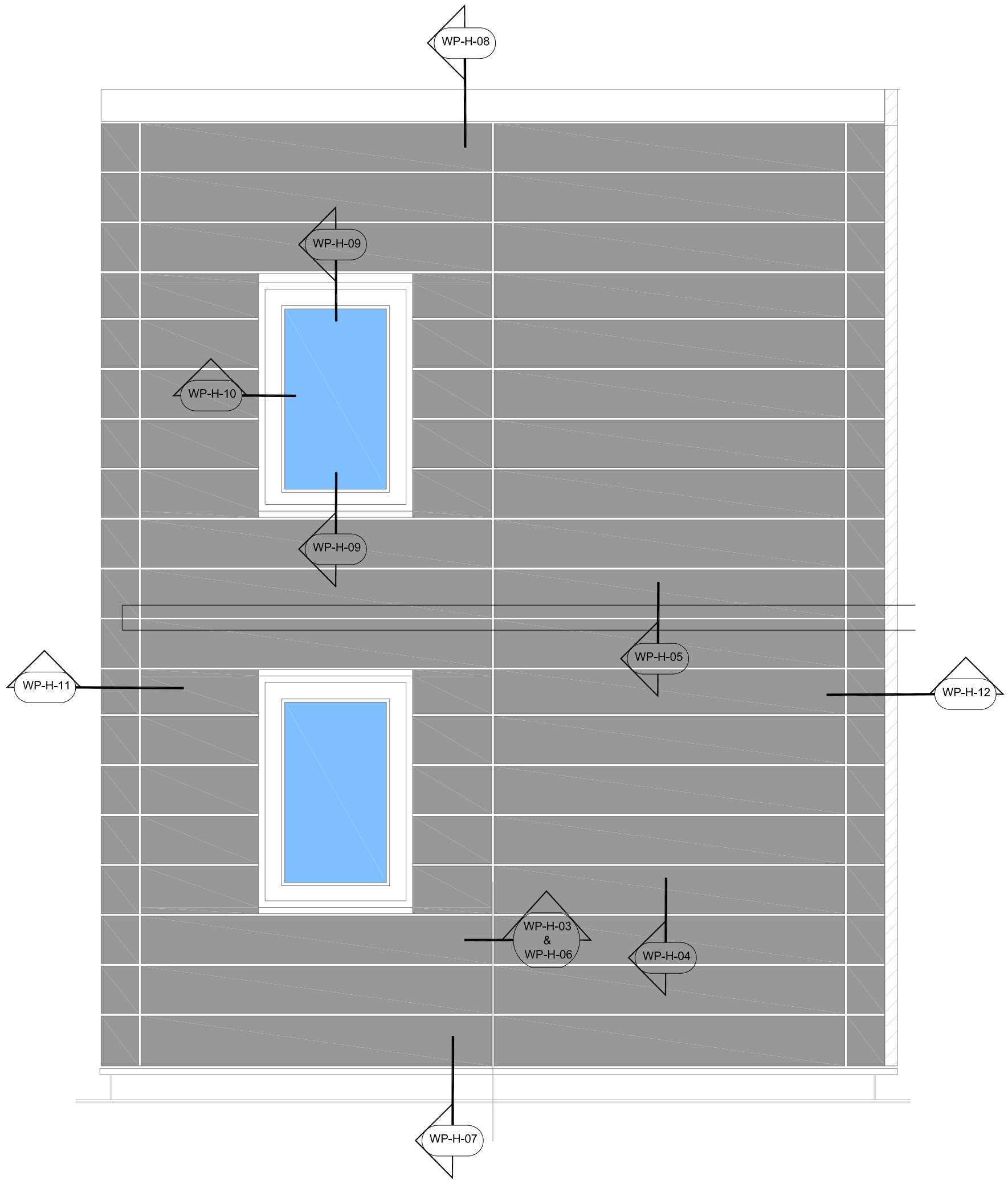
BRACKETS	Adjustment range for each bracket (mm)	
WP - 40	from 60	to 65
WP - 60	from 80	to 90
WP - 80	from 85	to 115
WP - 100	from 105	to 135
WP - 120	from 125	to 155
WP - 140	from 145	to 175
WP - 160	from 165	to 195
WP - 180	from 285	to 215
WP - 200	from 205	to 235
WP - 220	from 225	to 255
WP - 240	from 245	to 275
WP - 260	from 265	to 295
WP - 280	from 285	to 315
WP - 300	from 305	to 335

NOTE: -
DIMENSION RANGES DOES INCLUDE FOR THERMAL PADS



System
**Rear-Ventilated Facade
Horizontal WallPlank System (3mm thick Aluminium)**

Drawing No	Description	Revision	Scale
WP-H-01	Range of Bracket System	A	-
Drawn by	Rev	Description	Date
GMcW	A	Upper limits altered	06/08/2018
	By	Date	
	GMcW	March 2020	



Elevation on Cladding



System

**Rear-Ventilated Facade
Horizontal WallPlank System (3mm thick Aluminium)**

Drawing No

WP-H-02

Description

Cladding Detail Locations

Revision

A

Scale

-

Drawn by

GMcW

Rev

A

Description

DRAWING UPDATED

Date

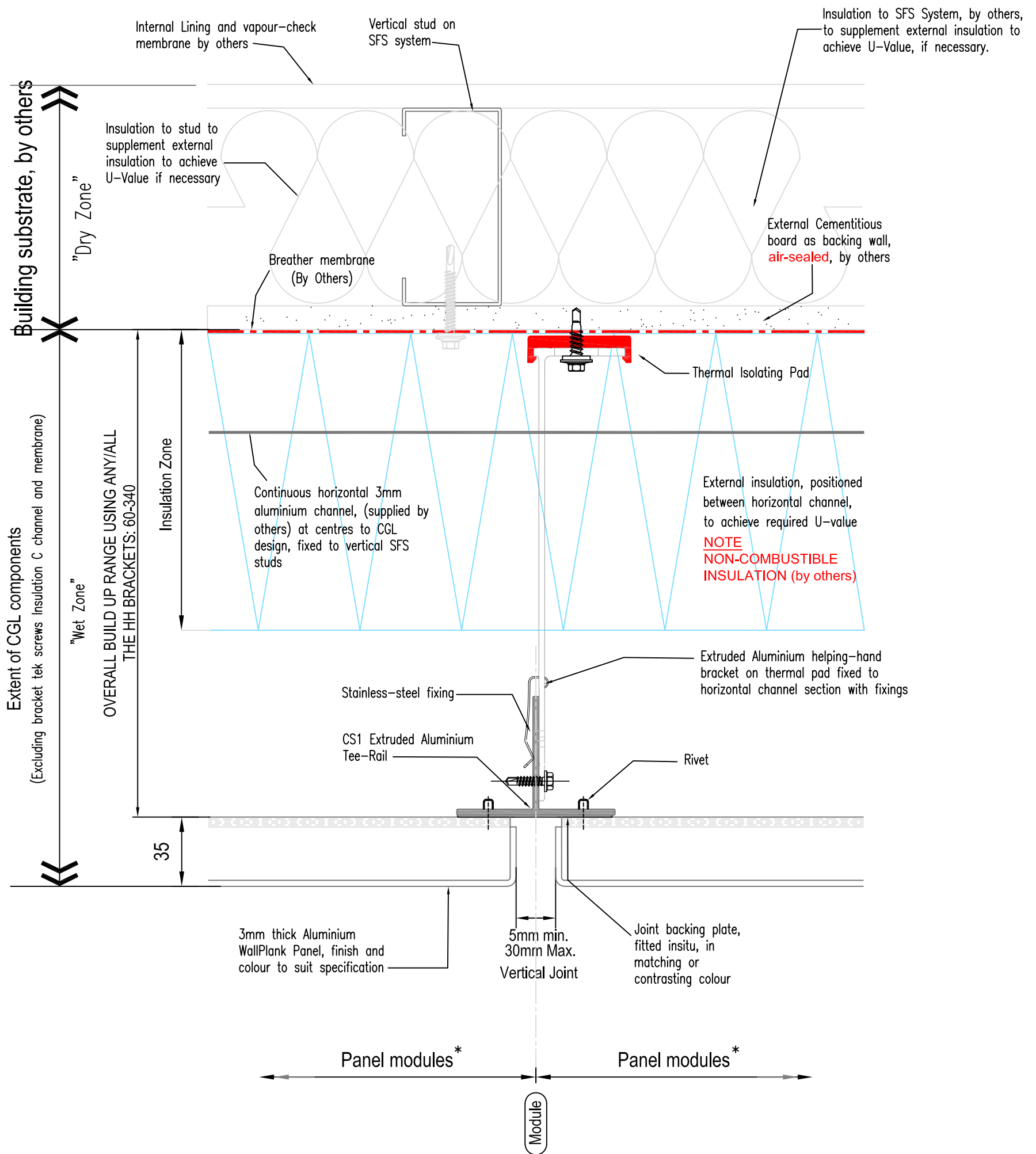
02/02/2022

By

LB

Date

March 2020

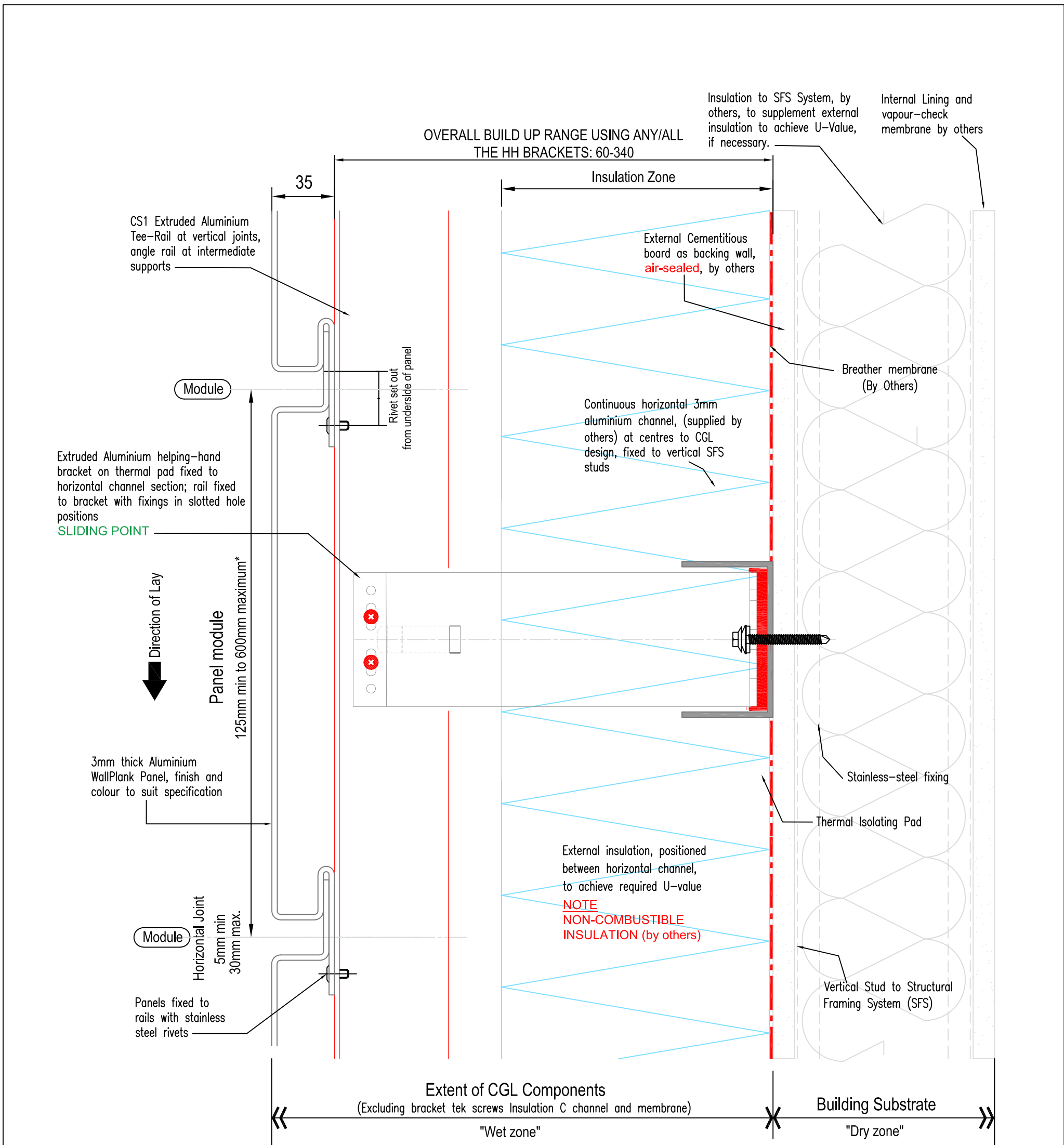


Notes:

- * For panel module parameters refer to "Systems Overview" document.
- Non CGL components are indicative and subject to contractors project specification



System					
Rear-Ventilated Facade Horizontal WallPlank System (3mm thick Aluminium)					
Drawing No		Description		Revision	Scale
WP-H-03		Section at Vertical Joint		A	1:2 @ A3
Drawn by		Rev	Description	Date	By
GMcW		A	DRAWING UPDATED	02/02/2022	LB
				Date	
				March 2020	



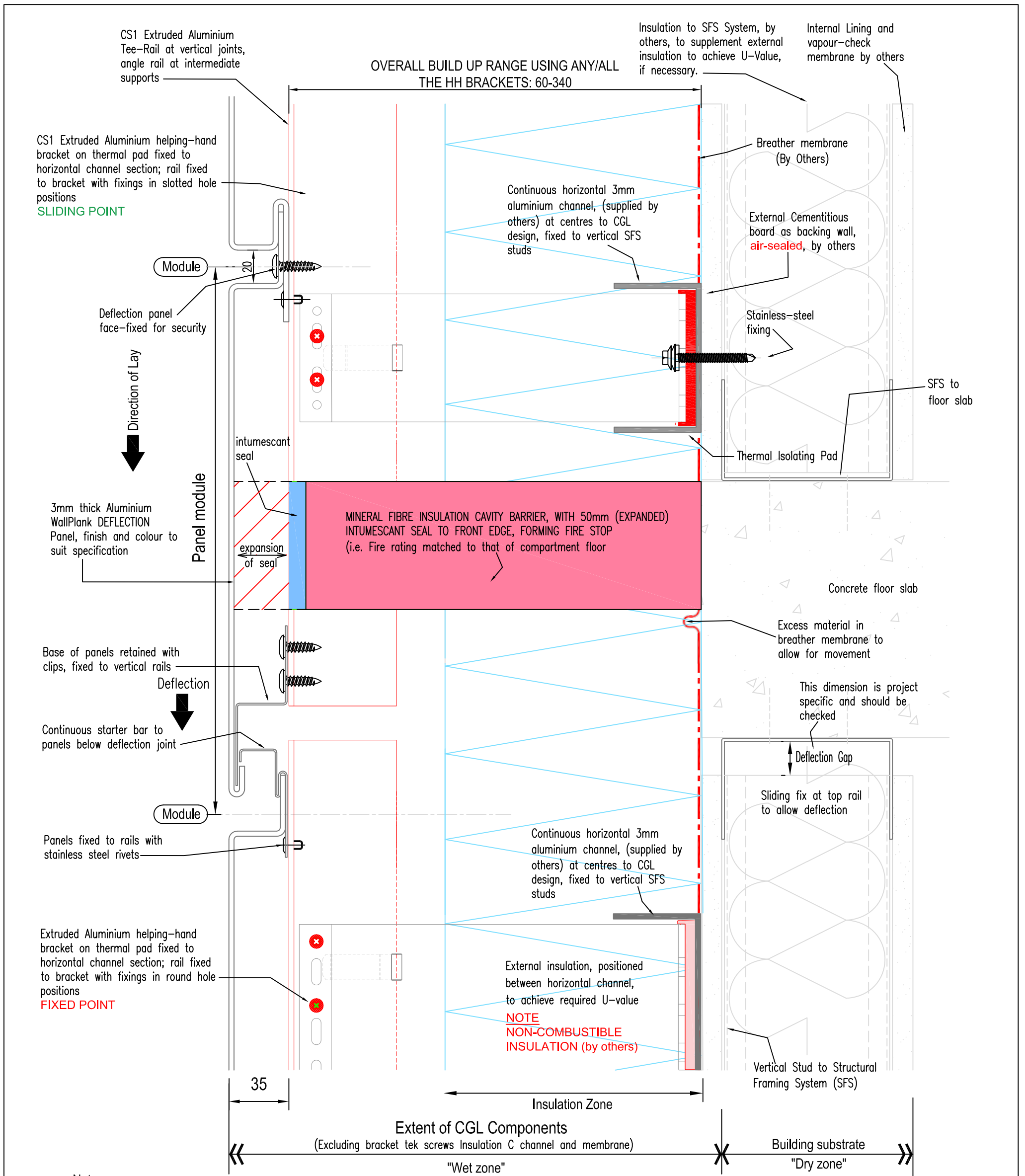
Notes:

* 600mm maximum module dependent on wind loads
 Non CGL components are indicative and subject to contractors project specification

CS1 grid system is multifunctional and movement is reviewed on a project-specific basis



System					
Rear-Ventilated Facade Horizontal WallPlank System (3mm thick Aluminium)					
Drawing No	Description			Revision	Scale
WP-H-04	Section at Horizontal Joint			A	1:2 @ A3
Drawn by	Rev	Description	Date	By	Date
GMcW	A	DRAWING UPDATED	02/02/2022	LB	March 2020



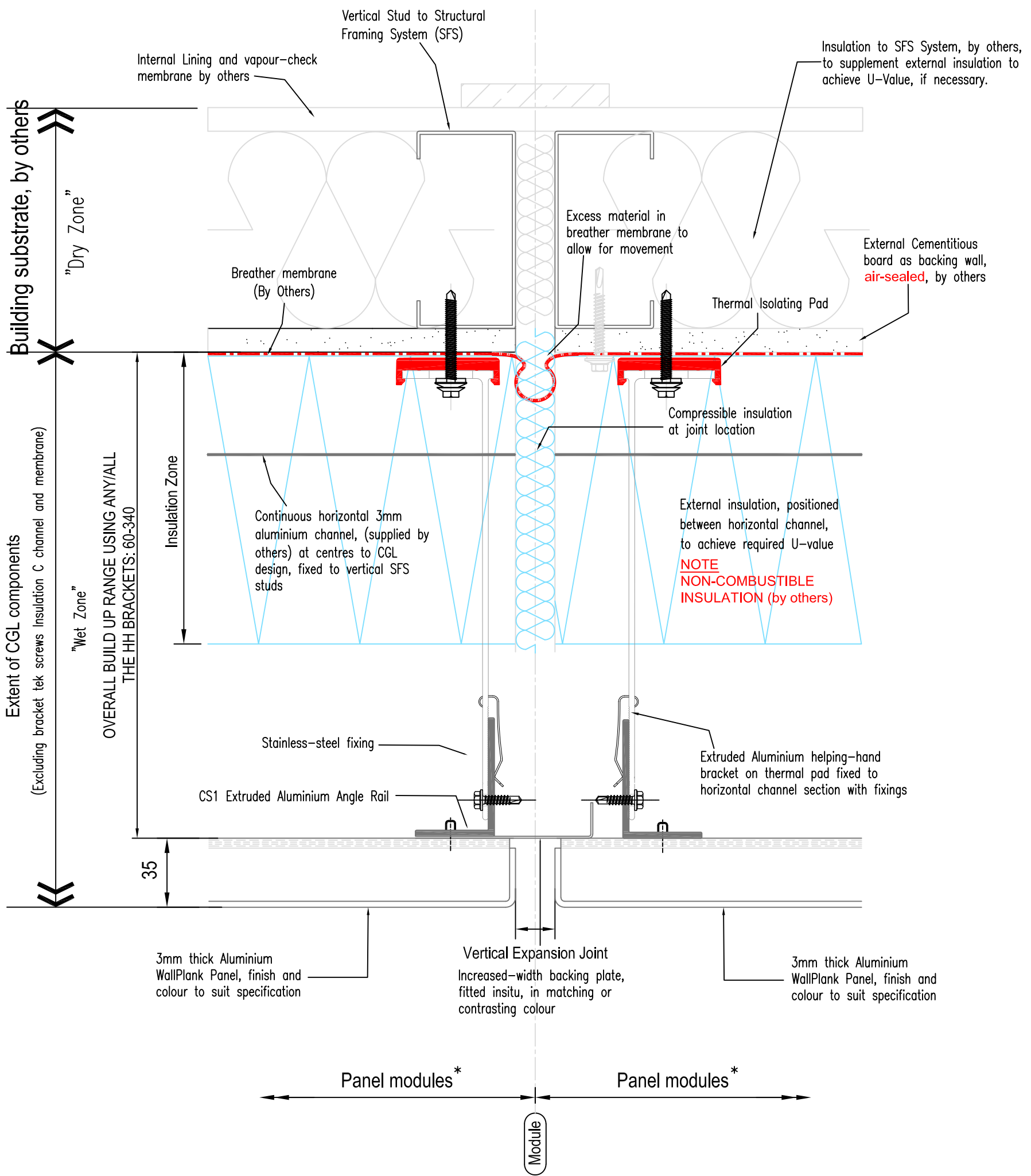
Notes:

- * = Movement joints must be co-ordinated.
- For panel module parameters refer to "Systems Overview" document.
- Non CGL components are indicative and subject to contractors project specification

CS1 grid system is multifunctional and movement is reviewed on a project-specific basis



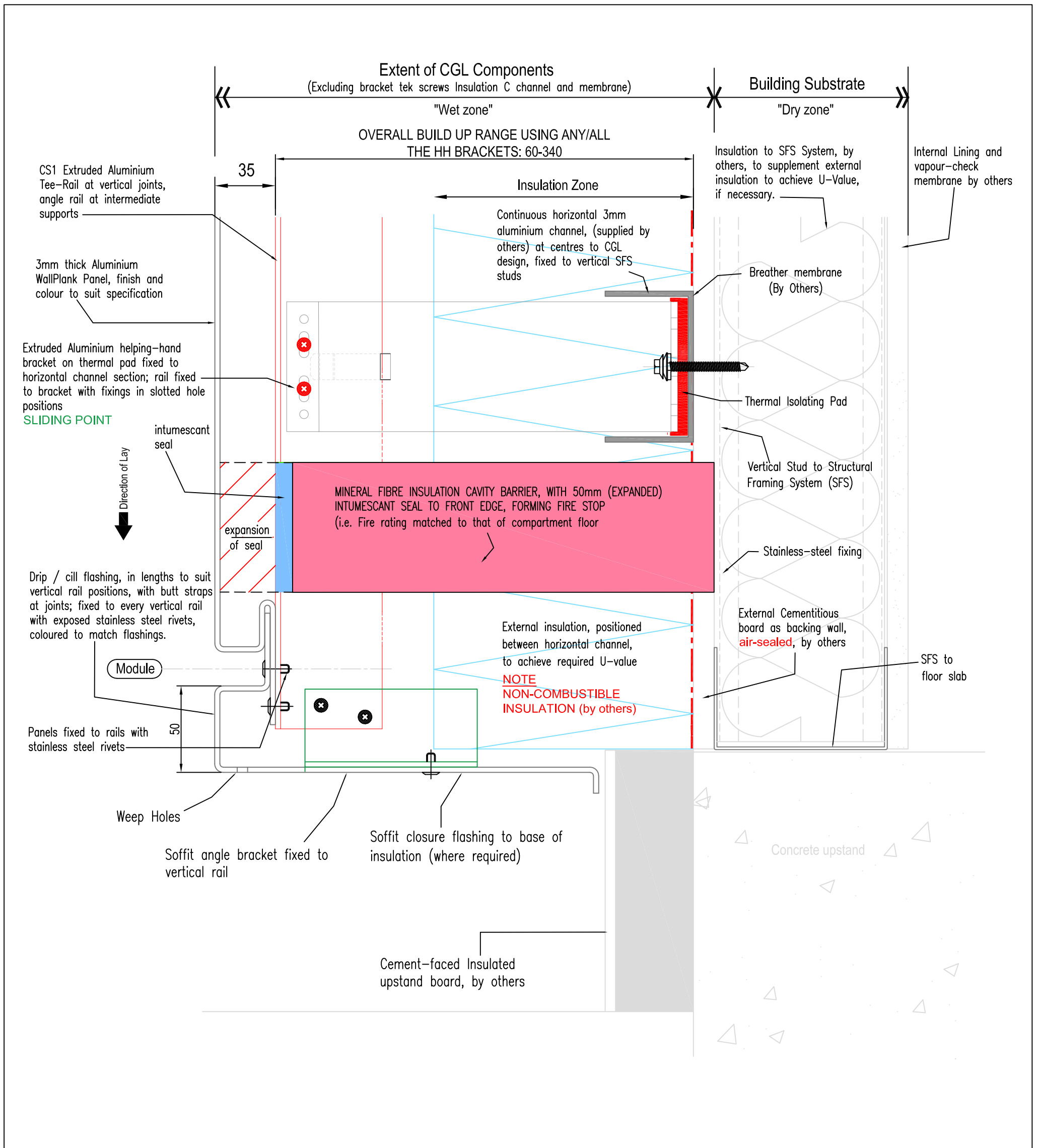
System					
Rear-Ventilated Facade Horizontal WallPlank System (3mm thick Aluminium)					
Drawing No	Description			Revision	Scale
WP-H-05	Deflection Detail at Floor Slab (incorporating fire stop arrangement)			A	1:2 @ A3
Drawn by	Rev	Description	Date	By	Date
GMcW	A	DRAWING UPDATED	02/02/2022	LB	March 2020



Notes:
 * For panel module parameters refer to "Systems Overview" document.
 Non CGL components are indicative and subject to contractors project specification



System					
Rear-Ventilated Facade Horizontal WallPlank System (3mm thick Aluminium)					
Drawing No		Description		Revision	Scale
WP-H-06		Section at Vertical Expansion Joint		A	1:2 @ A3
Drawn by		Rev	Description	Date	By
GMcW		A	DRAWING UPDATED	02/02/2022	LB
				Date	
				March 2020	



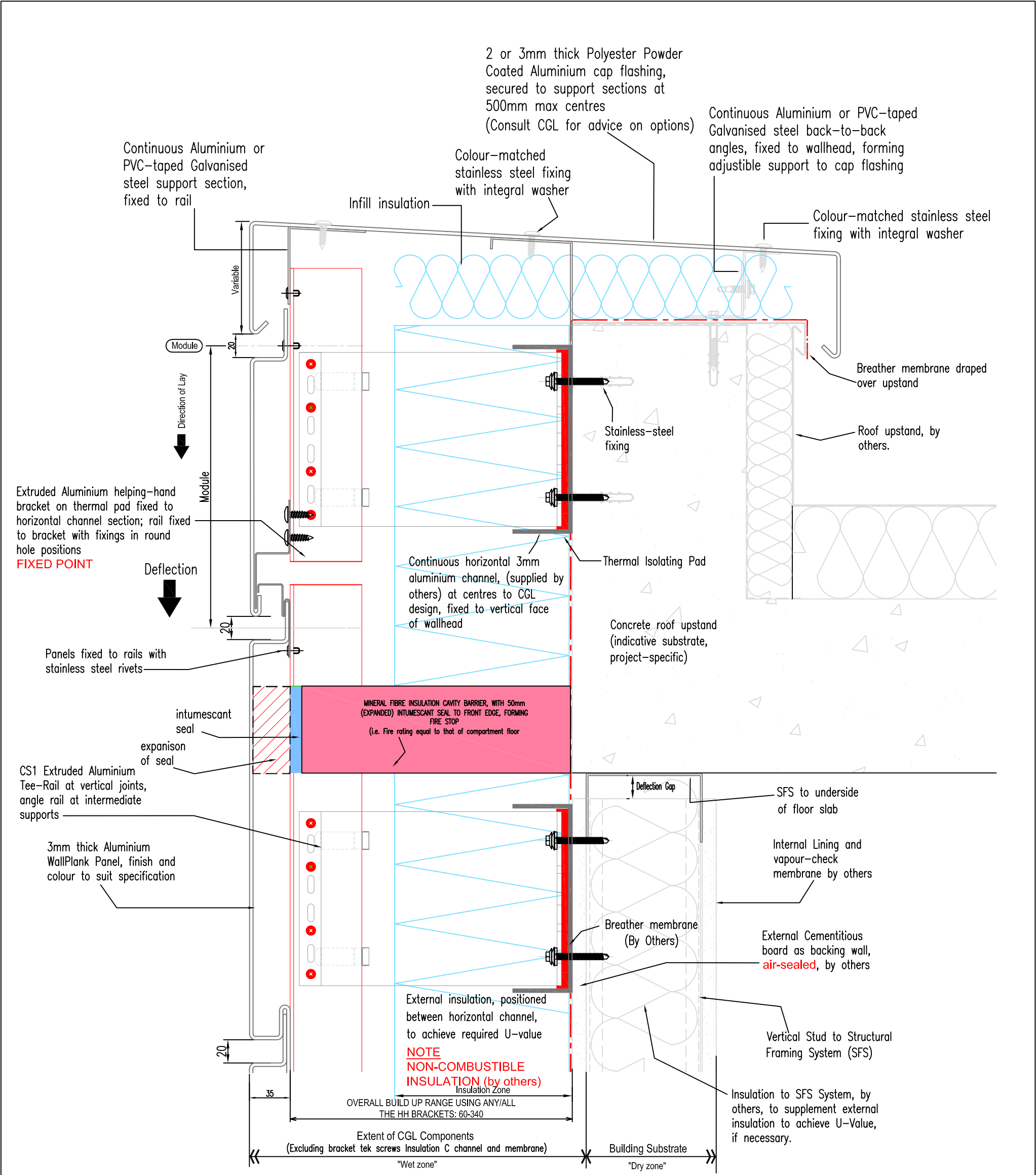
Notes:

For panel module parameters refer to "Systems Overview" document.

Non CGL components are indicative and subject to contractors project specification



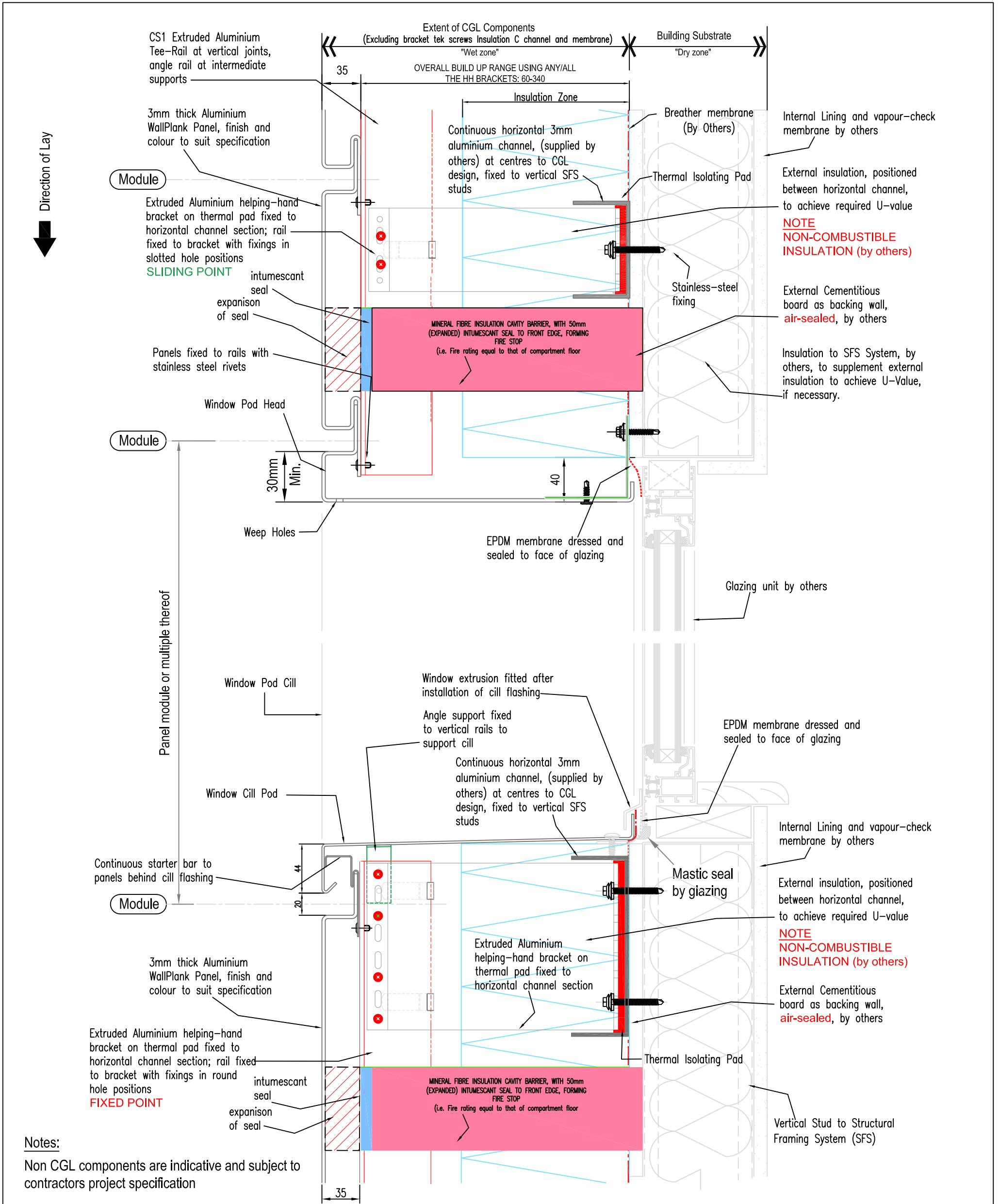
System					
Rear-Ventilated Facade Horizontal WallPlank System (3mm thick Aluminium)					
Drawing No	Description			Revision	Scale
WP-H-07	Section at Base of Cladding			A	1:2 @ A3
Drawn by	Rev	Description	Date	By	Date
GMcW	A	DRAWING UPDATED	02/02/2022	LB	March 2020



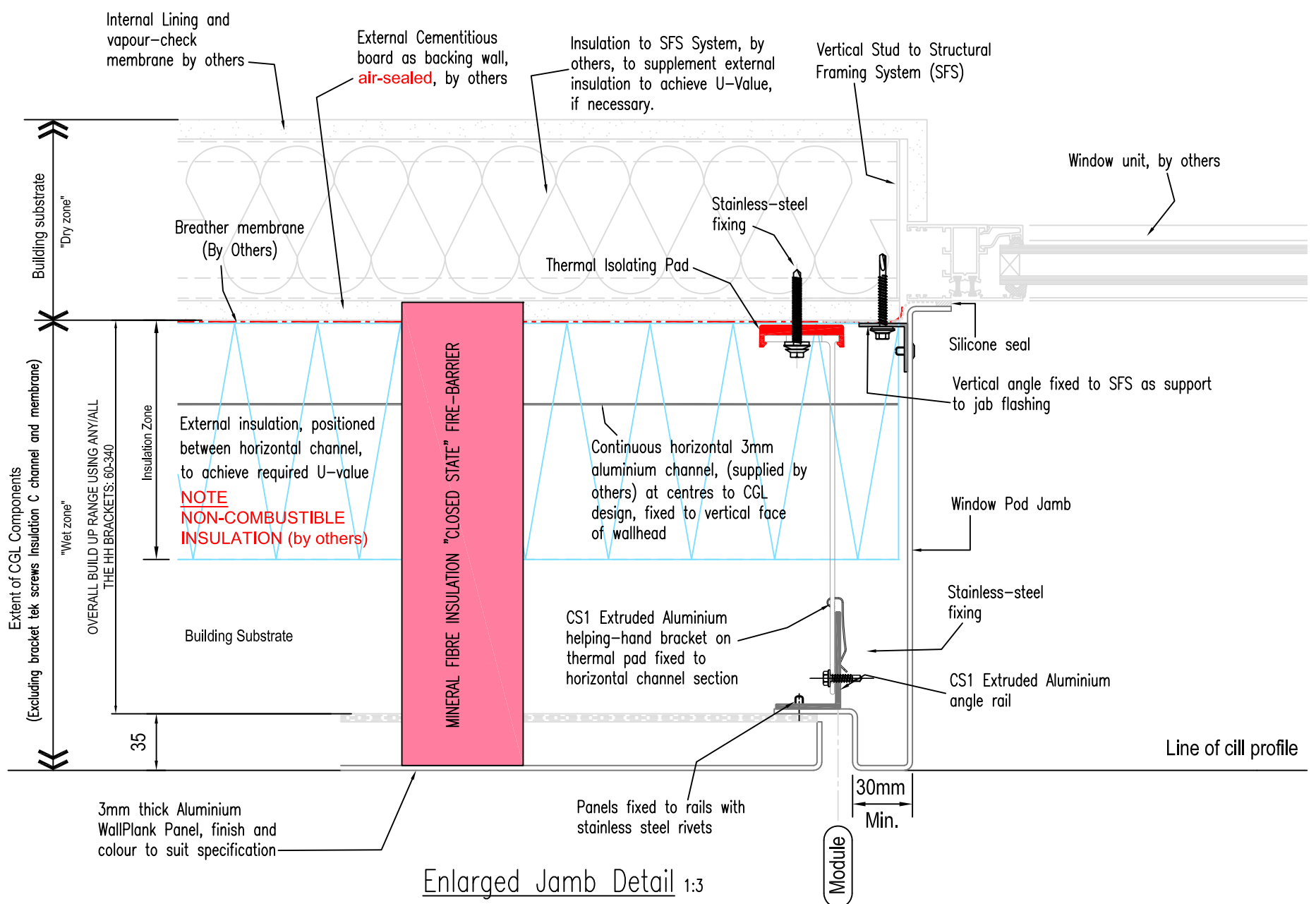
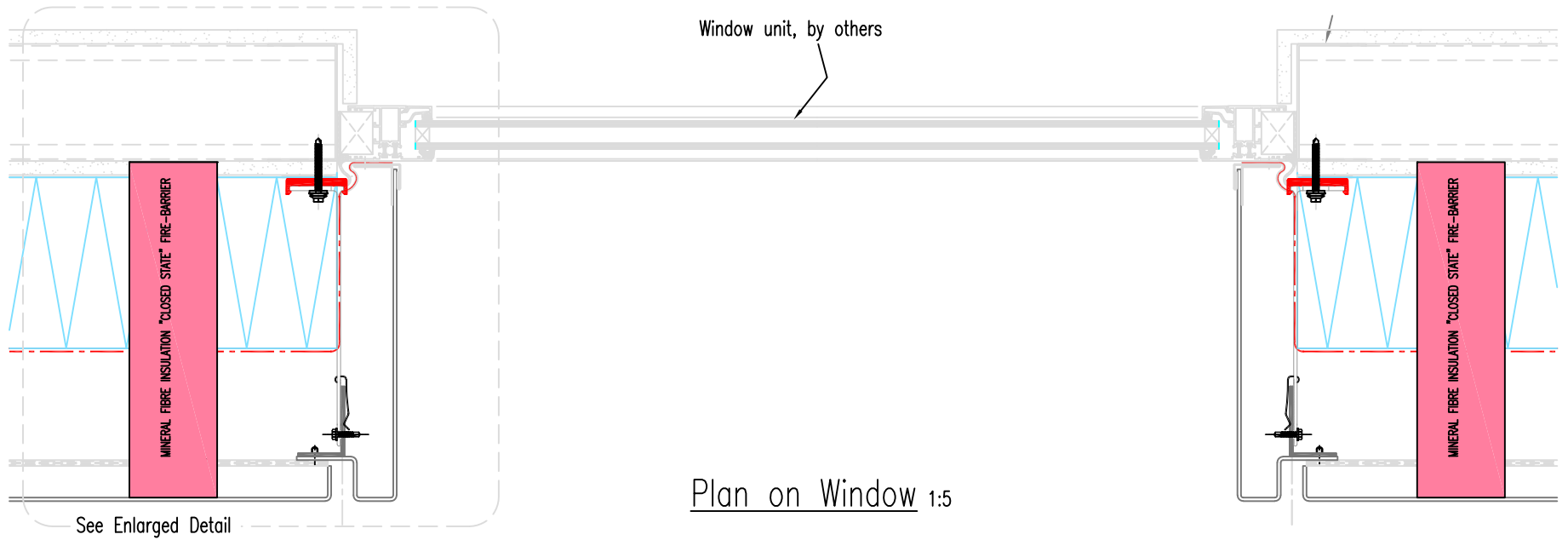
Notes:
 For panel module parameters refer to "Systems Overview" document.
 Non CGL components are indicative and subject to contractors project specification



System Rear-Ventilated Facade Horizontal WallPlank System (3mm thick Aluminium)						
Drawing No WP-H-08		Description Section at Top of Cladding			Revision A	Scale 1:3 @ A3
Drawn by GMcW	Rev A	Description DRAWING UPDATED	Date 02/02/2022	By LB	Date March 2020	



System					
Rear-Ventilated Facade					
Horizontal WallPlank System (3mm thick Aluminium)					
Drawing No	Description			Revision	Scale
WP-H-09	Section thro' Window			A	1:3 @ A3
Drawn by	Rev	Description	Date	By	Date
GMcW	A	DRAWING UPDATED	02/02/2022	LB	March 2020

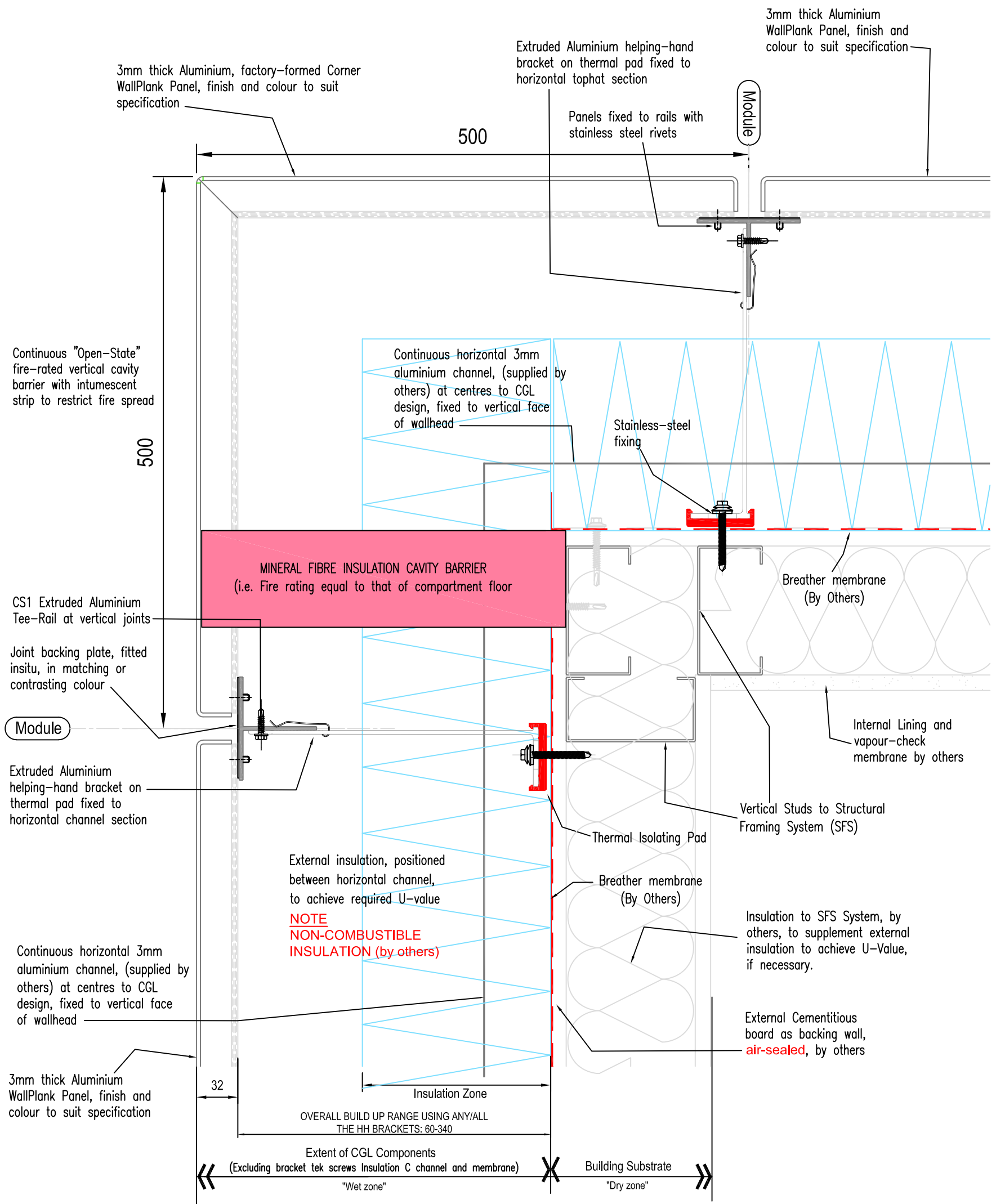


Notes:

For panel module parameters refer to "Systems Overview" document.
 Non CGL components are indicative and subject to contractors project specification



System					
Rear-Ventilated Facade Horizontal WallPlank System (3mm thick Aluminium)					
Drawing No		Description		Revision	Scale
WP-H-10		Window Jamb Detail		A	As shown @ A3
Drawn by		Rev	Description	Date	By
GMcW		A	DRAWING UPDATED	02/02/2022	LB
				Date	
				March 2020	

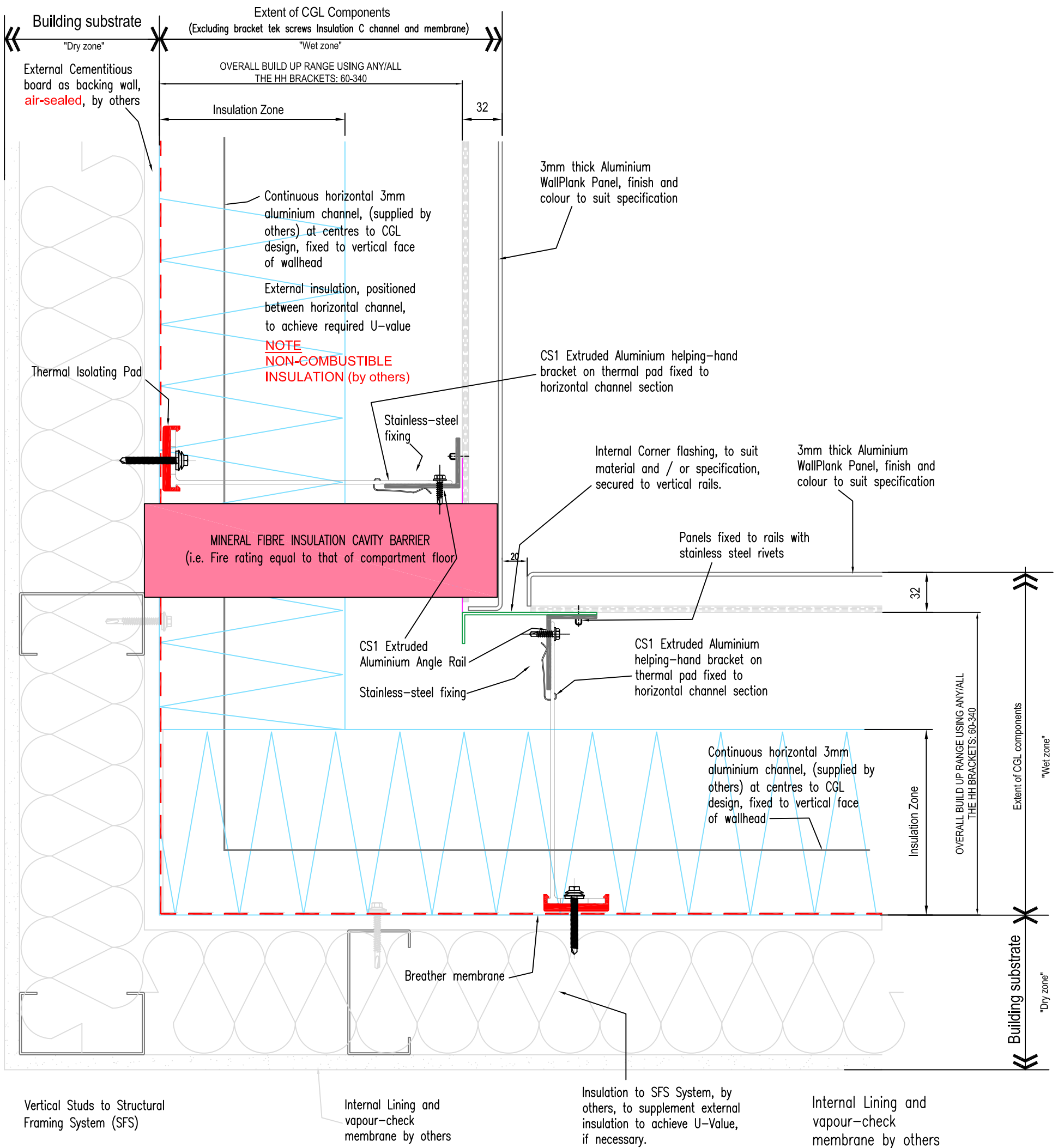


Notes:

For panel module parameters refer to "Systems Overview" document.
 Non CGL components are indicative and subject to contractors project specification



System					
Rear-Ventilated Facade Horizontal WallPlank System (3mm thick Aluminium)					
Drawing No		Description		Revision	Scale
WP-H-11		External Corner Panel Detail		A	1:3 @ A3
Drawn by		Rev	Description	Date	By
GMcW		A	DRAWING UPDATED	02/02/2022	LB
				Date	
				March 2020	



Notes:

For panel module parameters refer to "Systems Overview" document.
 Non CGL components are indicative and subject to contractors project specification



System					
Rear-Ventilated Facade Horizontal WallPlank System (3mm thick Aluminium)					
Drawing No	Description			Revision	Scale
WP-H-12	Internal Corner Detail			A	1:3 @ A3
Drawn by	Rev	Description	Date	By	Date
GMcW	A	DRAWING UPDATED	02/02/2022	LB	March 2020