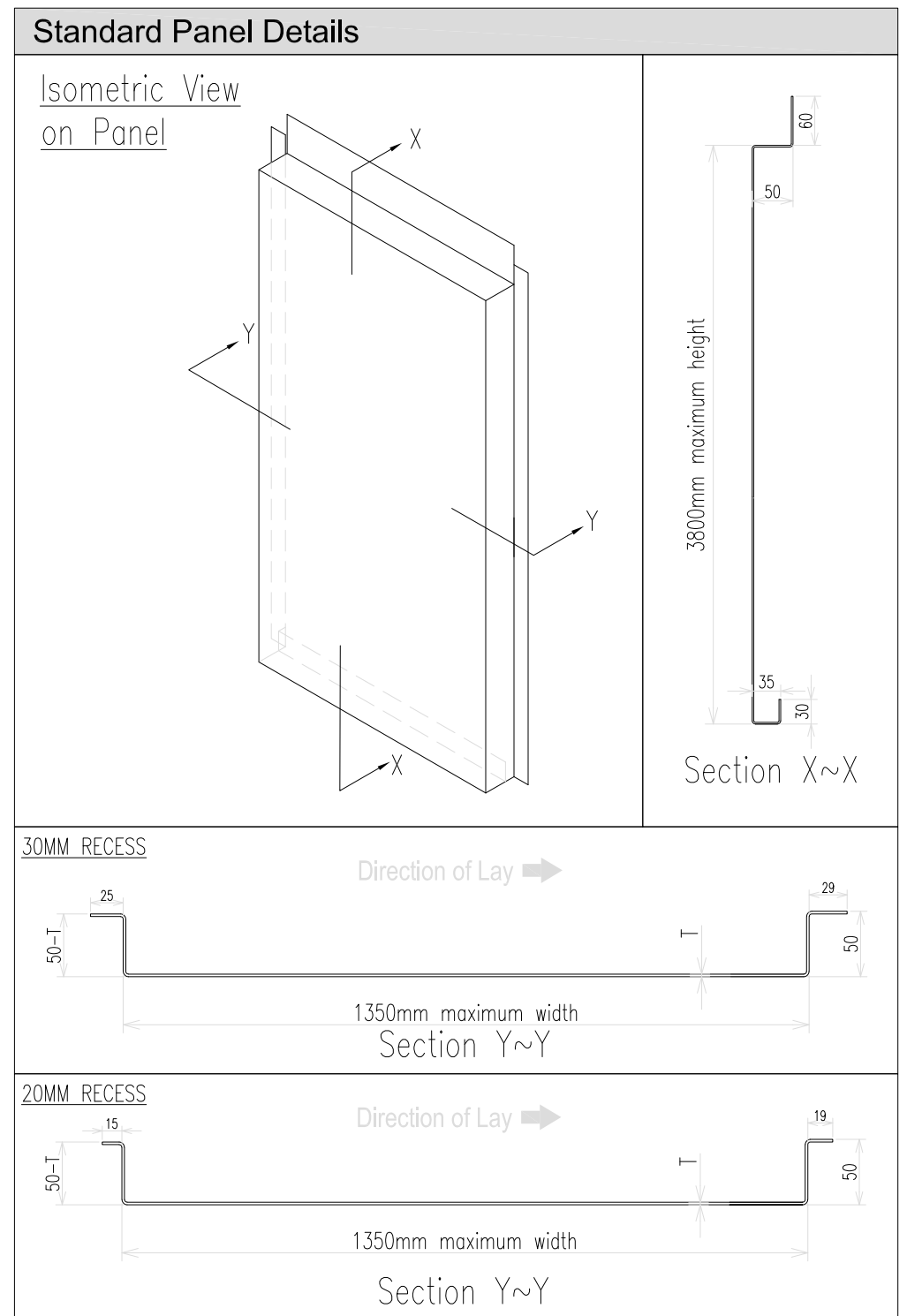


CGL Facades

Rear-Ventilated Aluminium Vertical TrayPanel System

Contents

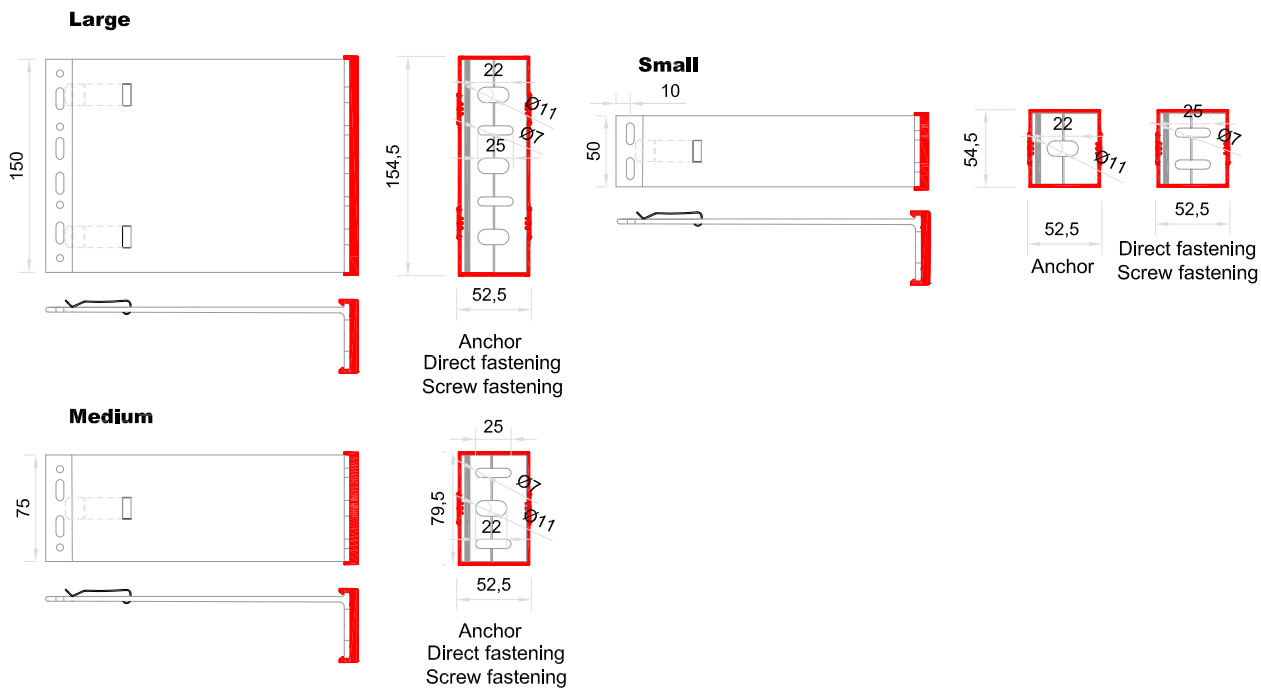
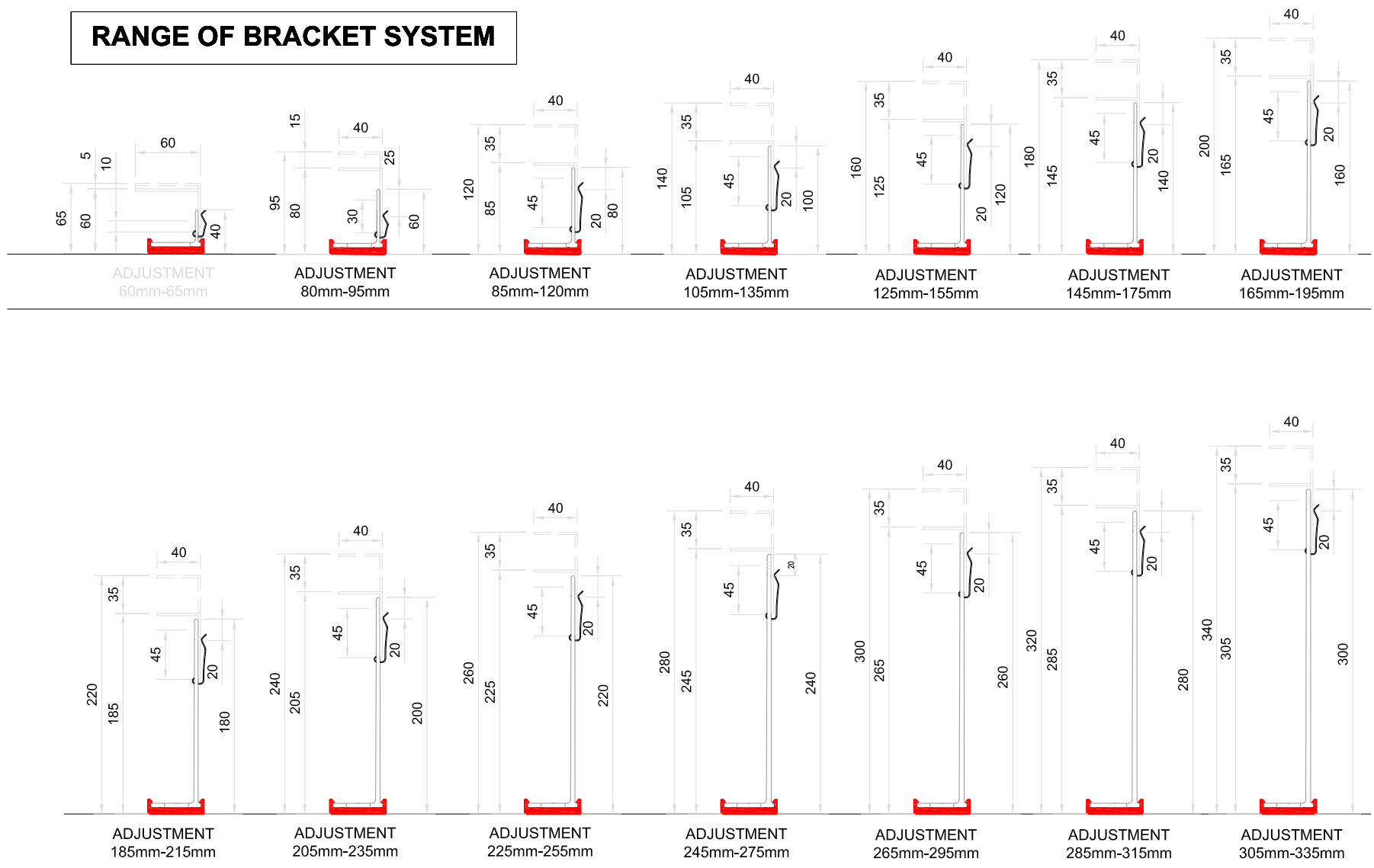
- TP-V-00 - System Contents & Photographs
- TP-V-01 - Range of Bracket System
- TP-V-02 - Cladding Detail Locations
- TP-V-03 - Section at Vertical Joint
- TP-V-04 - Section at Horizontal Joint
- TP-V-05 - Deflection Detail at Floor Slab (including Fire-Stop)
- TP-V-06 - Section at Base of Cladding
- TP-V-07 - Section at Head of Cladding
- TP-V-08 - Vertical Section thro' Window
- TP-V-09 - Window Jamb Detail
- TP-V-10 - External Corner
- TP-V-11 - Internal Corner



System
**Rear-Ventilated Facade
 Vertical TrayPanel System**

Drawing No	Description	Revision	Scale
TP-V-00	System Contents Page	-	-
Drawn by	Rev	Description	Date
GMcW	A	Ventilation Paths added	24/08/2018
	B	DRAWING UPDATED	07/02/2022
	By	Date	
	GMcW LB	January 2019	

RANGE OF BRACKET SYSTEM



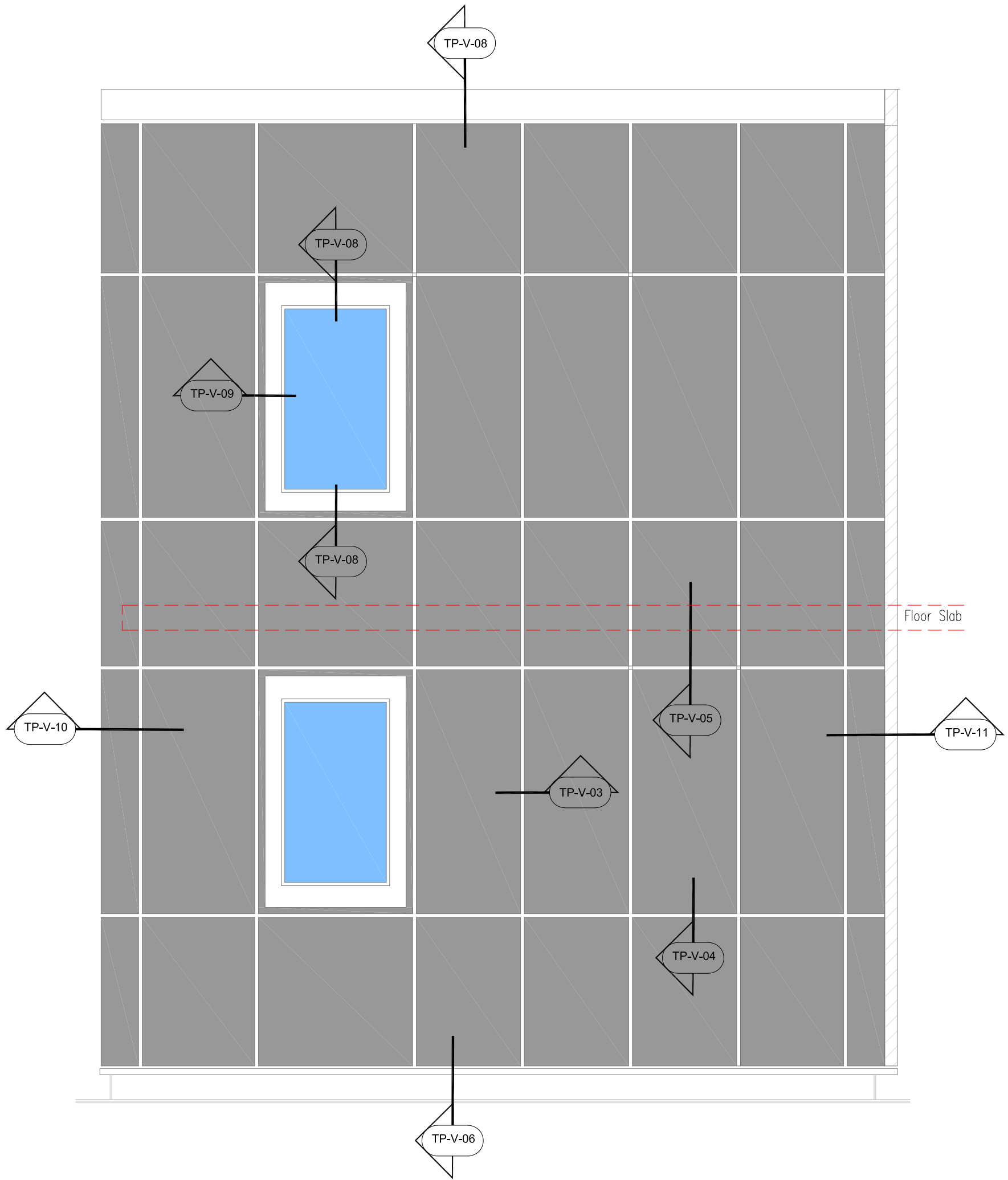
BRACKETS	Adjustment range for each bracket (mm)	
TP - 40	from 60	to 65
TP - 60	from 80	to 90
TP - 80	from 85	to 115
TP - 100	from 105	to 135
TP - 120	from 125	to 155
TP - 140	from 145	to 175
TP - 160	from 165	to 195
TP - 180	from 285	to 215
TP - 200	from 205	to 235
TP - 220	from 225	to 255
TP - 240	from 245	to 275
TP - 260	from 265	to 295
TP - 280	from 285	to 315
TP - 300	from 305	to 335

NOTE: -
DIMENSION RANGES DOES INCLUDE
FOR THERMAL PADS



System
**Rear-Ventilated Facade
Vertical TrayPanel System**

Drawing No	Description	Revision	Scale
TP-V-01	Range of Bracket System	A	-
Drawn by GMcW	Rev	Description	Date
	B	Angles indicated	28/08/2018
	C	Revised Bracket Range	14/01/2022
	By	Date	
	GMcW	January 2019	
	LR		



Elevation on Cladding



System

**Rear-Ventilated Facade
Vertical TrayPanel System**

Drawing No

TP-V-02

Description

Cladding Detail Locations

Revision

-

Scale

-

Drawn by

GMcW

Rev

Description

A Ventilation Paths added
B DRAWING UPDATED

Date

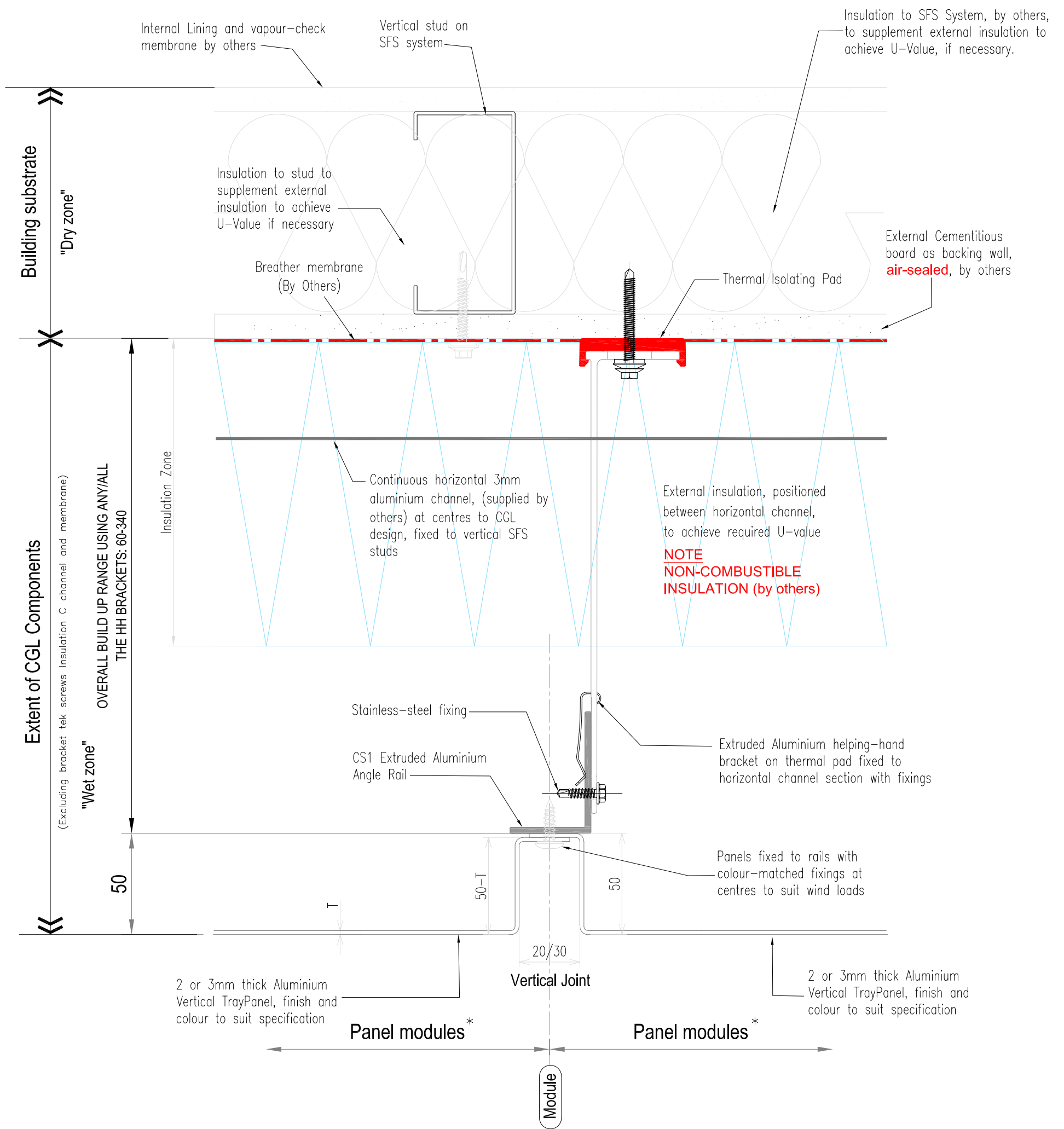
24/08/2018
07/02/2022

By

GMcW
LB

Date

January 2019

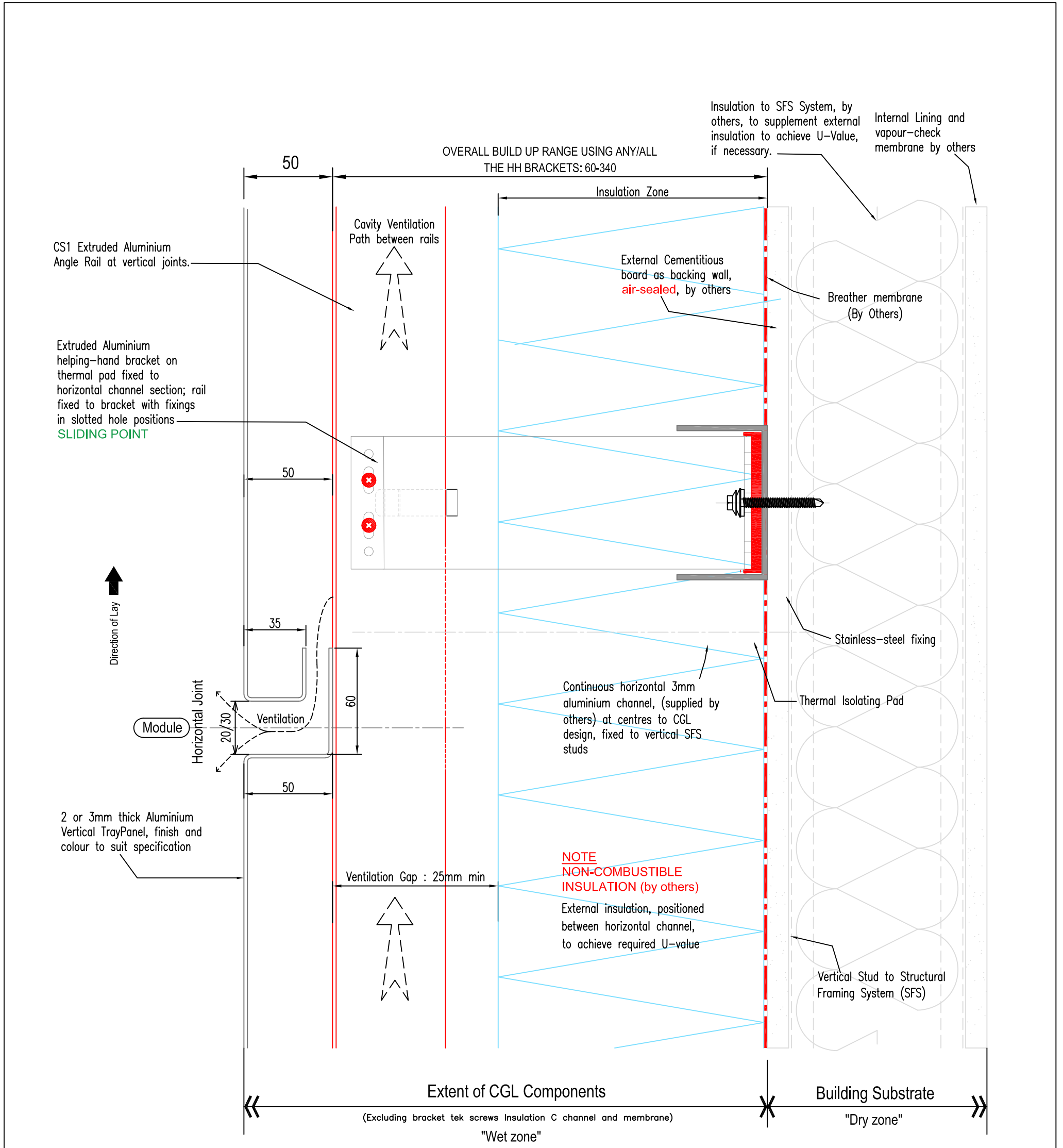


Notes:

- * For panel module parameters refer to "Systems Overview" document.
- Non CGL components are indicative and subject to contractors project specification



System					
Rear-Ventilated Facade Vertical TrayPanel System					
Drawing No	Description			Revision	Scale
TP-V-03	Section at Vertical Joint			-	1:2 @ A3
Drawn by	Rev	Description	Date	By	Date
GMcW	A	Ventilation Paths added	24/08/2018	GMcW LB	January 2019
	B	DRAWING UPDATED	07/02/2022		

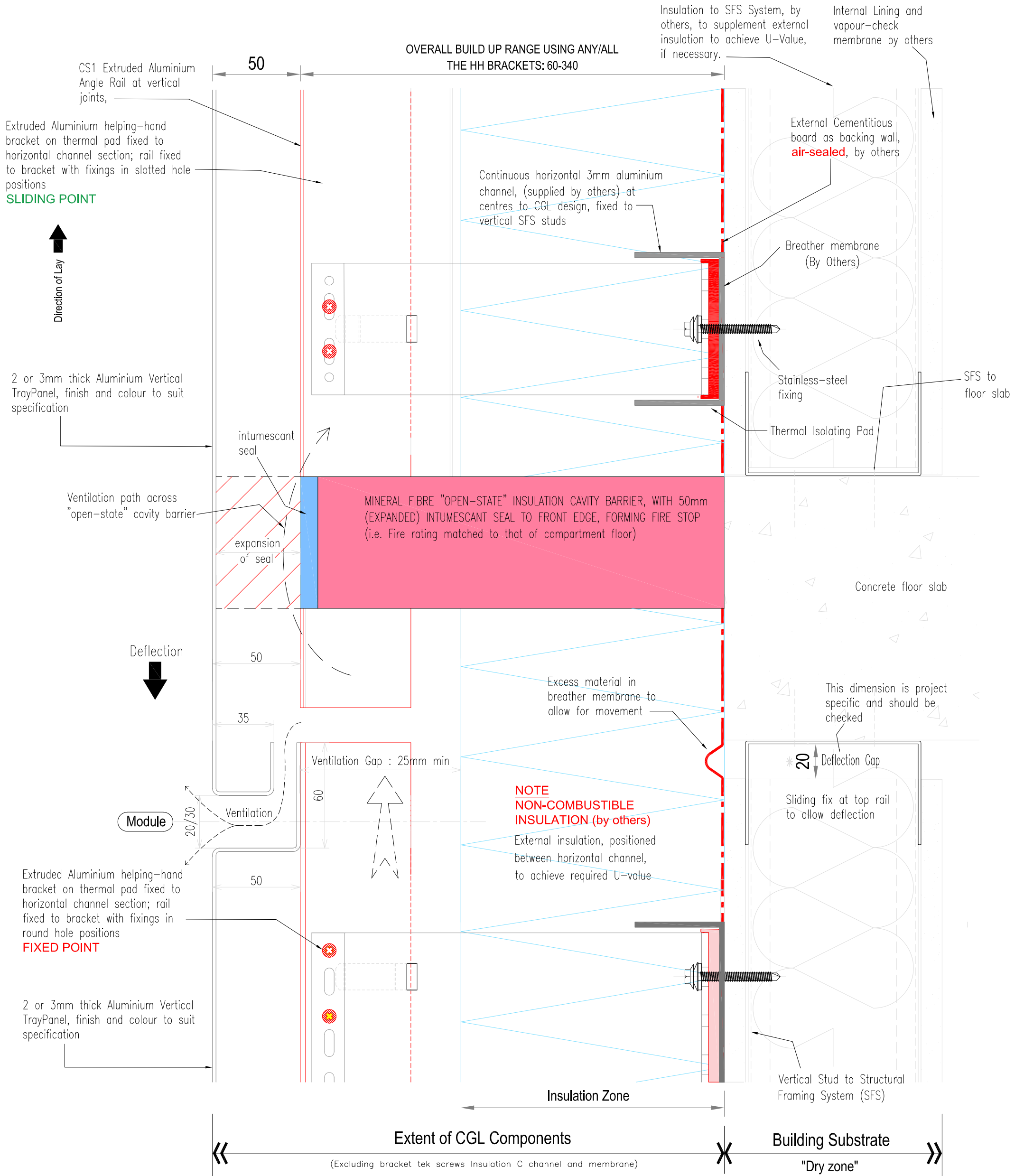


Notes:
 Non CGL components are indicative and subject to contractors project specification

CS1 grid system is multifunctional and movement is reviewed on a project-specific basis



System					
Rear-Ventilated Facade Vertical TrayPanel System					
Drawing No		Description		Revision	Scale
TP-V-04		Section at Horizontal Joint		A	1:2 @ A3
Drawn by		Rev	Description	Date	By
GMcW		A	Ventilation Paths added	24/08/2018	GMcW
		B	DRAWING UPDATED	07/02/2022	LB
				Date	
				August 2018	



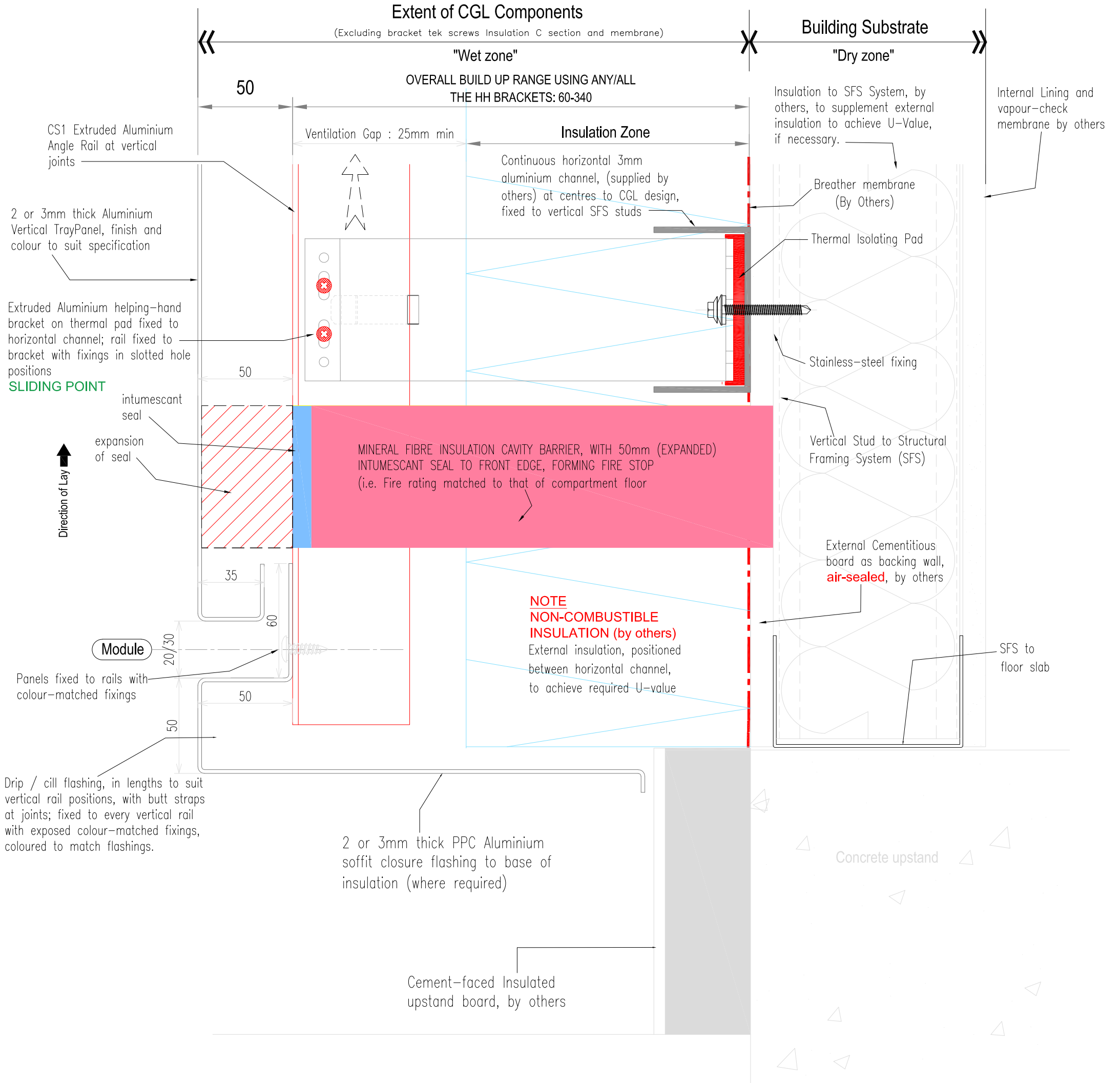
Notes:

- * = Movement joints must be co-ordinated.
- For panel module parameters refer to "Systems Overview" document.
- Non CGL components are indicative and subject to contractors project specification

CS1 grid system is multifunctional and movement is reviewed on a project-specific basis



System					
Rear-Ventilated Facade Vertical TrayPanel System					
Drawing No	Description			Revision	Scale
TP-V-05	Deflection Detail at Floor Slab (incorporating fire stop arrangement)			A	1:2 @ A3
Drawn by	Rev	Description	Date	By	Date
GMcW	A	Ventilation Paths added	24/08/2018	GMcW	January 2019
	B	DRAWING UPDATED	07/02/2022	LB	



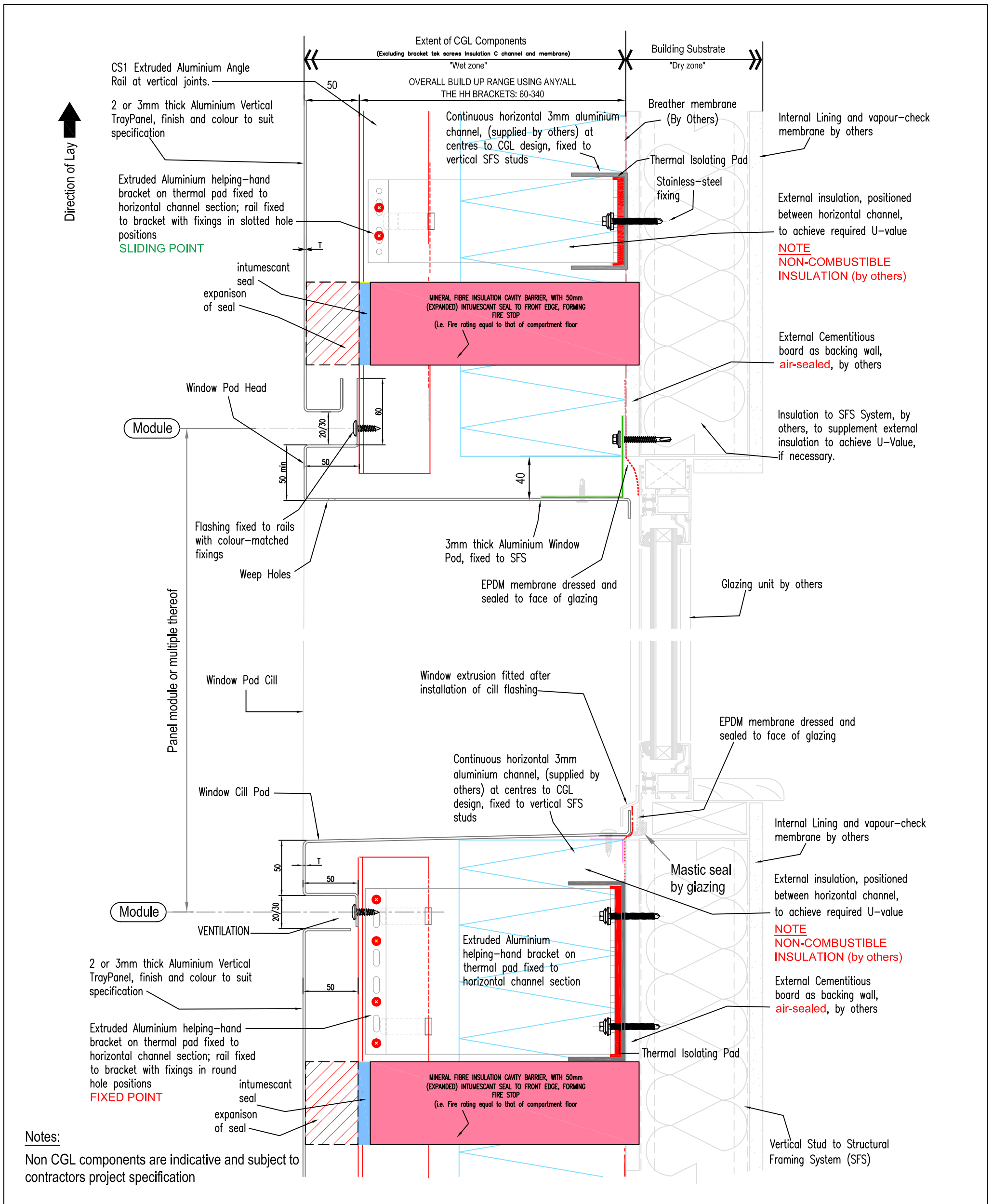
Notes:

For panel module parameters refer to "Systems Overview" document.

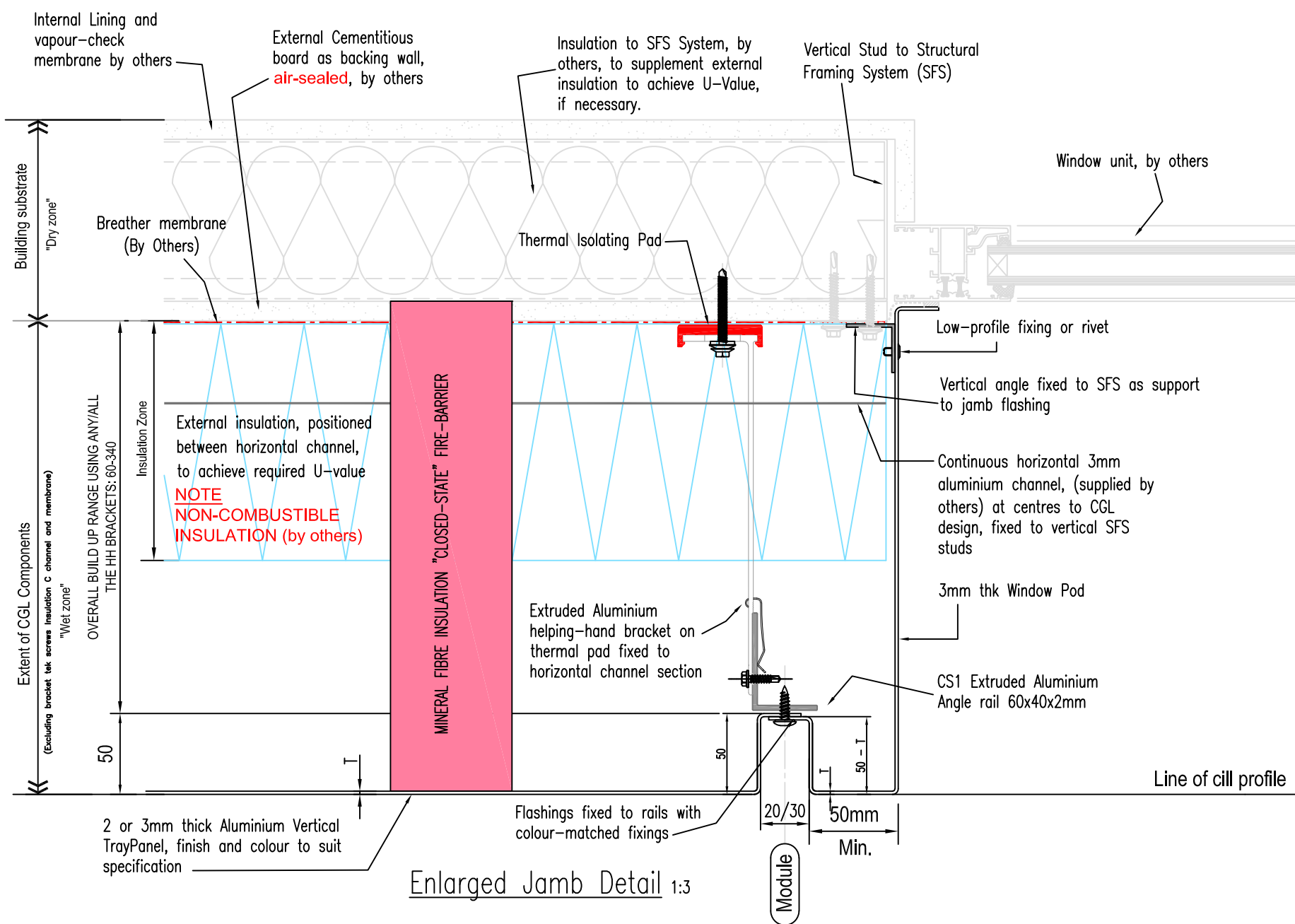
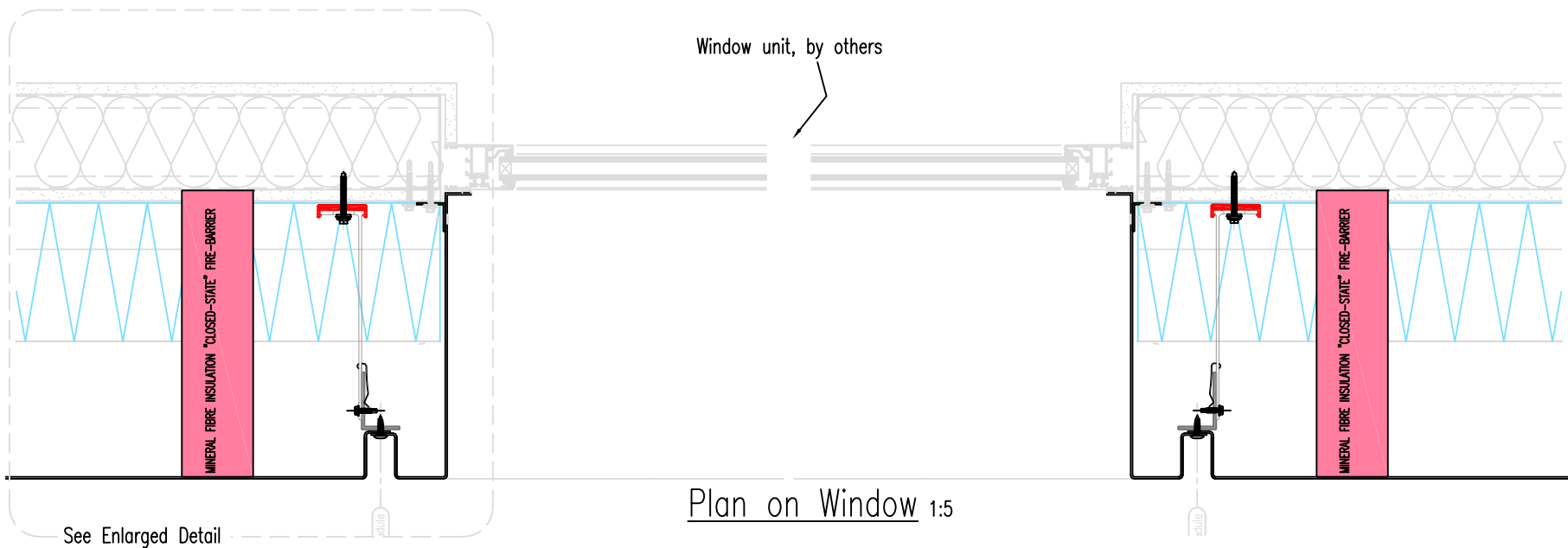
Non CGL components are indicative and subject to contractors project specification



System					
Rear-Ventilated Facade Vertical TrayPanel System					
Drawing No	Description			Revision	Scale
TP-V-06	Section at Base of Cladding			A	1:2 @ A3
Drawn by	Rev	Description	Date	By	Date
GMcW	A	Ventilation Paths added	24/08/2018	GMcW	January 2019
	B	DRAWING UPDATED	07/02/2022	LB	



System					
Rear-Ventilated Facade Vertical TrayPanel System					
Drawing No	Description			Revision	Scale
TP-V-08	Section thro' Window			-	1:3 @ A3
Drawn by	Rev	Description	Date	By	Date
GMcW	A	Ventilation Paths added	24/08/2018	GMcW	January 2019
	B	DRAWING UPDATED	07/02/2022	LB	



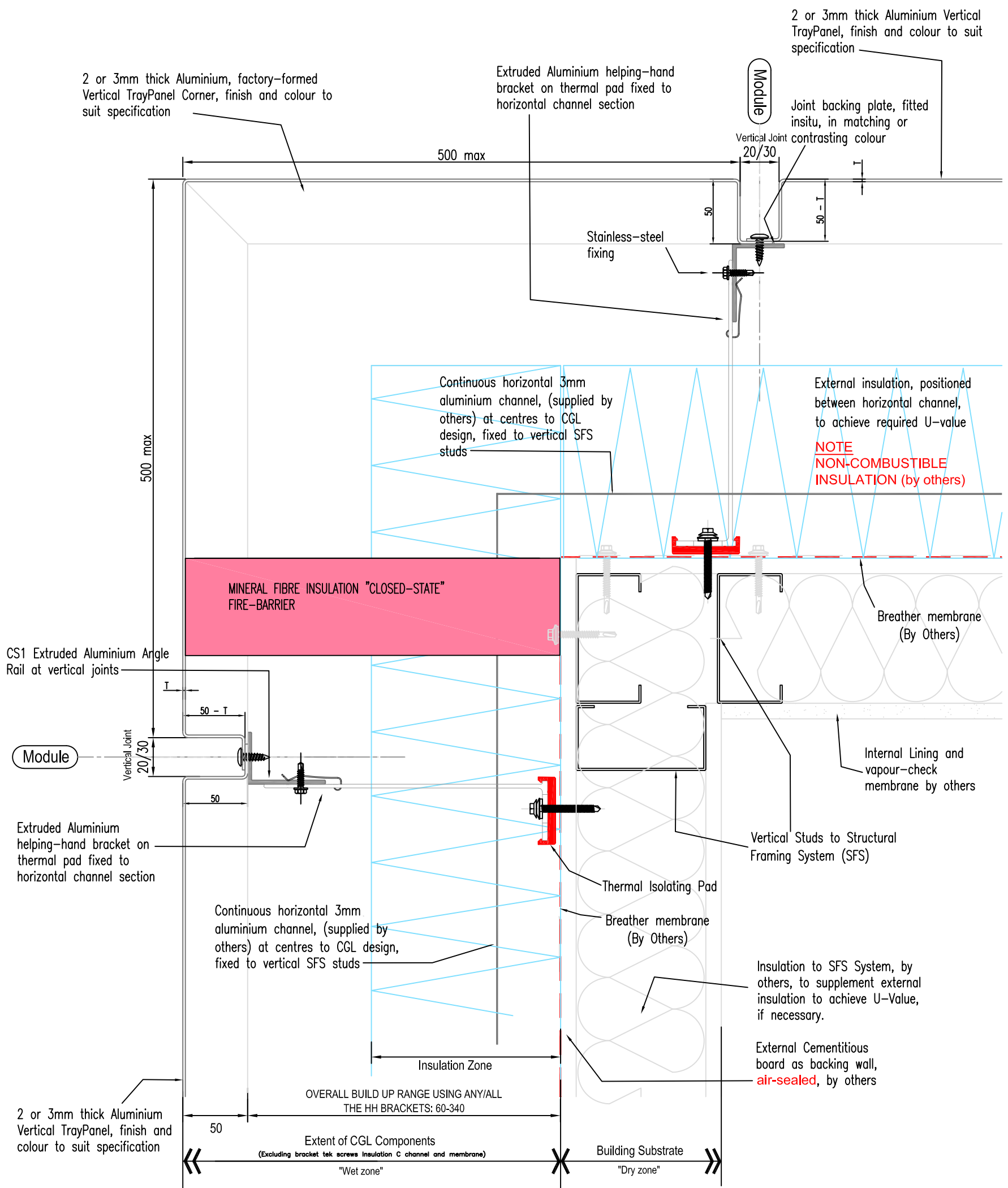
Notes:

For panel module parameters refer to "Systems Overview" document.

Non CGL components are indicative and subject to contractors project specification



System					
Rear-Ventilated Facade Vertical TrayPanel System					
Drawing No		Description		Revision	Scale
TP-V-09		Window Jamb Detail		-	As shown @ A3
Drawn by		Rev	Description	Date	By
GMcW		A	Ventilation Paths added	24/08/2018	GMcW
		B	DRAWING UPDATED	07/02/2022	LB
				Date	January 2019



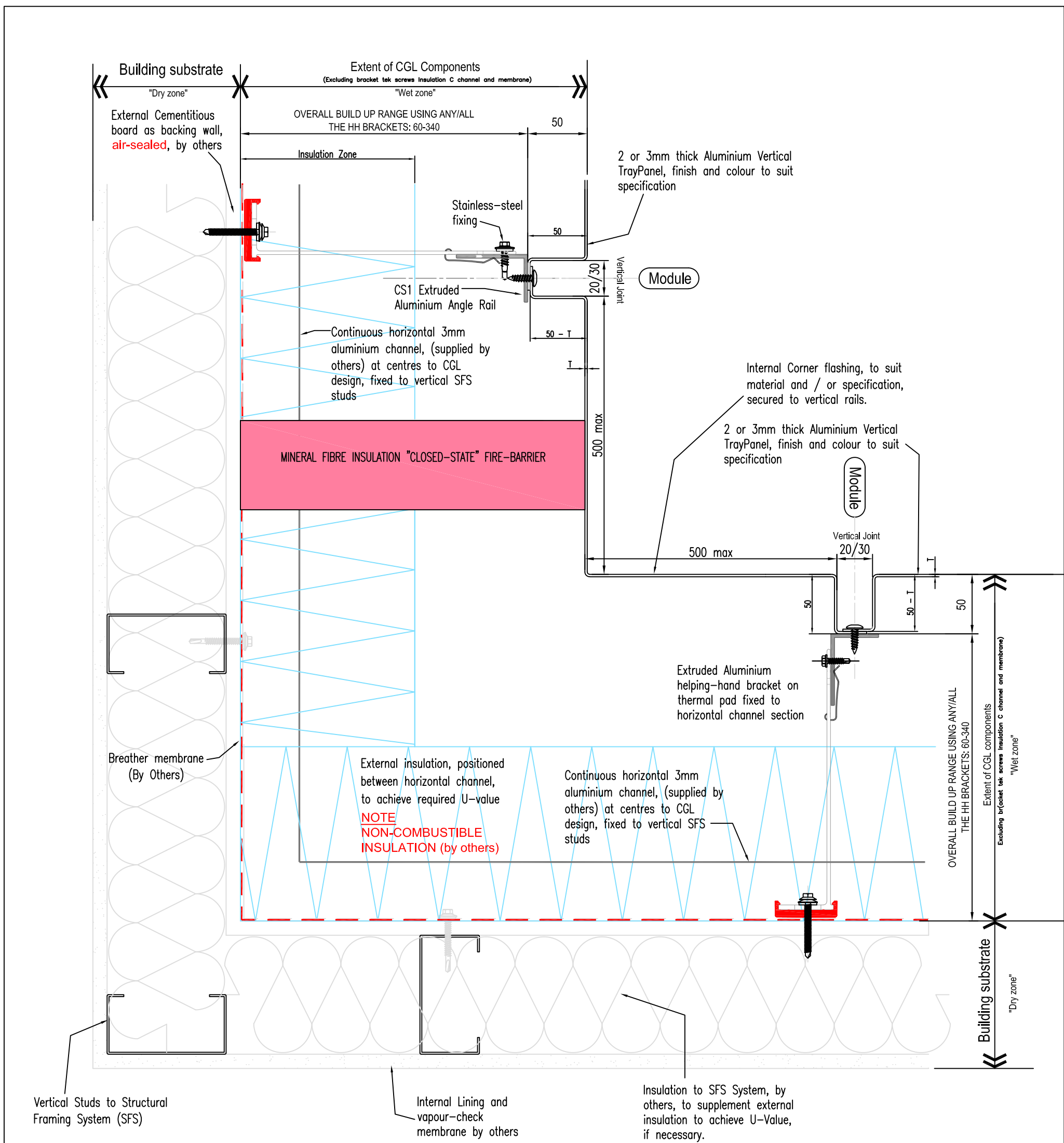
Notes:

For panel module parameters refer to "Systems Overview" document.

Non CGL components are indicative and subject to contractors project specification



System					
Rear-Ventilated Facade Vertical TrayPanel System					
Drawing No		Description		Revision	Scale
TP-V-10		External Corner Panel Detail		-	1:3 @ A3
Drawn by		Rev	Description	Date	By
GMcW		A	Ventilation Paths added	24/08/2018	GMcW
		B	DRAWING UPDATED	07/02/2022	LB
				Date	
				January 2019	



Notes:

For panel module parameters refer to "Systems Overview" document.
 Non CGL components are indicative and subject to contractors project specification



System					
Rear-Ventilated Facade Vertical TrayPanel System					
Drawing No		Description		Revision	Scale
TP-V-11		Internal Corner Detail		-	1:3 @ A3
Drawn by		Rev	Description	Date	By
GMcW		A	Ventilation Paths added	24/08/2018	GMcW
		B	DRAWING UPDATED	07/02/2022	LB
				Date	January 2019